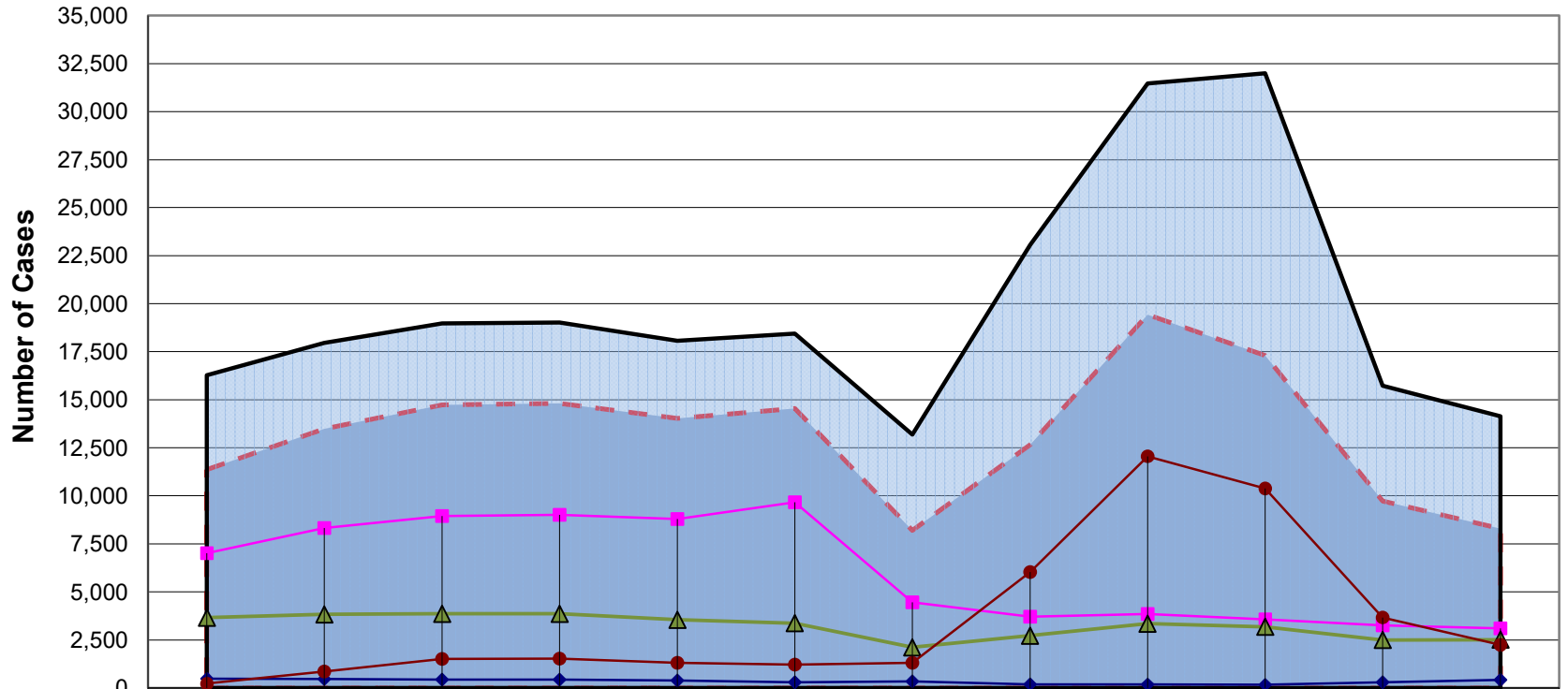


CDRP Statewide Trend Report

Annual Comparison of Disposed Cases



	2014	2015	2016	2017	2018	2019	2020	2021	2022	2023	2024	**Proj. 2025
Total Core	11,370	13,472	14,743	14,814	14,025	14,543	8,203	12,659	19,423	17,314	9,717	8,281
Total Disposed	16,274	17,956	18,968	19,025	18,066	18,449	13,182	23,054	31,456	31,998	15,724	14,151
Conciliated	485	454	423	423	376	297	336	195	176	168	297	416
Mediated to Agreement	7,010	8,330	8,950	9,008	8,795	9,663	4,457	3,713	3,848	3,572	3,260	3,104
*Mediated w/o Agreement	3,650	3,825	3,866	3,866	3,546	3,375	2,113	2,718	3,346	3,184	2,494	2,519
Facilitated/Arbitrated	225	863	1,504	1,517	1,308	1,208	1,297	6,033	12,053	10,390	3,666	2,243

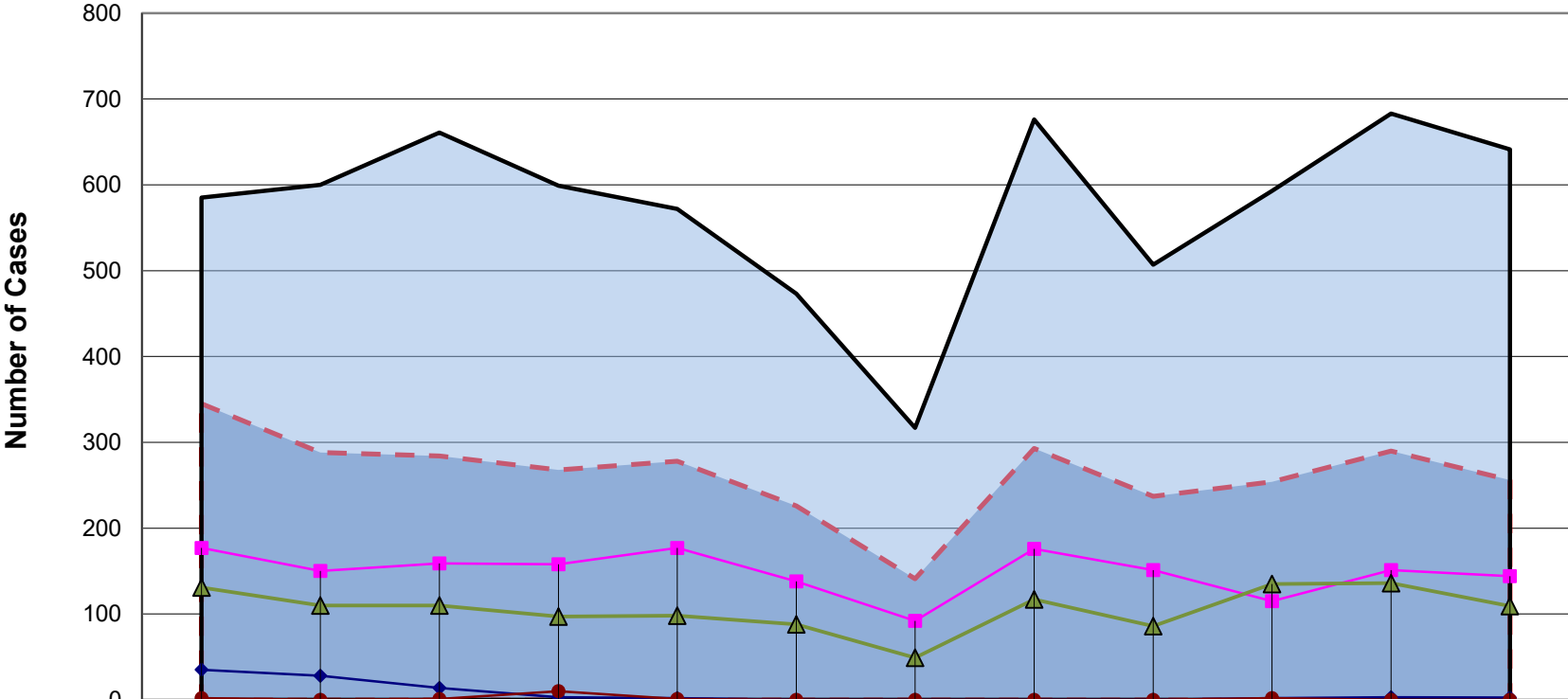
- - - Total Core
 — Total Disposed
 —◆— Conciliated
 —■— Mediated to Agreement
 —▲— *Mediated w/o Agreement
 —●— Facilitated/Arbitrated

*Includes Mediated to Partial Agreement

**2025 Projection Calculated Using First through Third Quarter Reporting Data

Citizens Mediation Service (Berrien)

Annual Comparison of Disposed Cases



	2014	2015	2016	2017	2018	2019	2020	2021	2022	2023	2024	**Proj. 2025
Total Core	345	288	284	268	278	226	141	293	237	254	290	256
Total Disposed	585	600	661	599	572	473	317	676	507	593	683	641
Conciliated	35	28	14	3	2	0	0	0	0	2	3	3
Mediated to Agreement	177	150	159	158	177	138	92	176	151	115	151	144
*Mediated w/o Agreement	131	110	110	97	98	88	49	117	86	135	136	109
Facilitated/Arbitrated	2	0	1	10	1	0	0	0	0	2	0	0

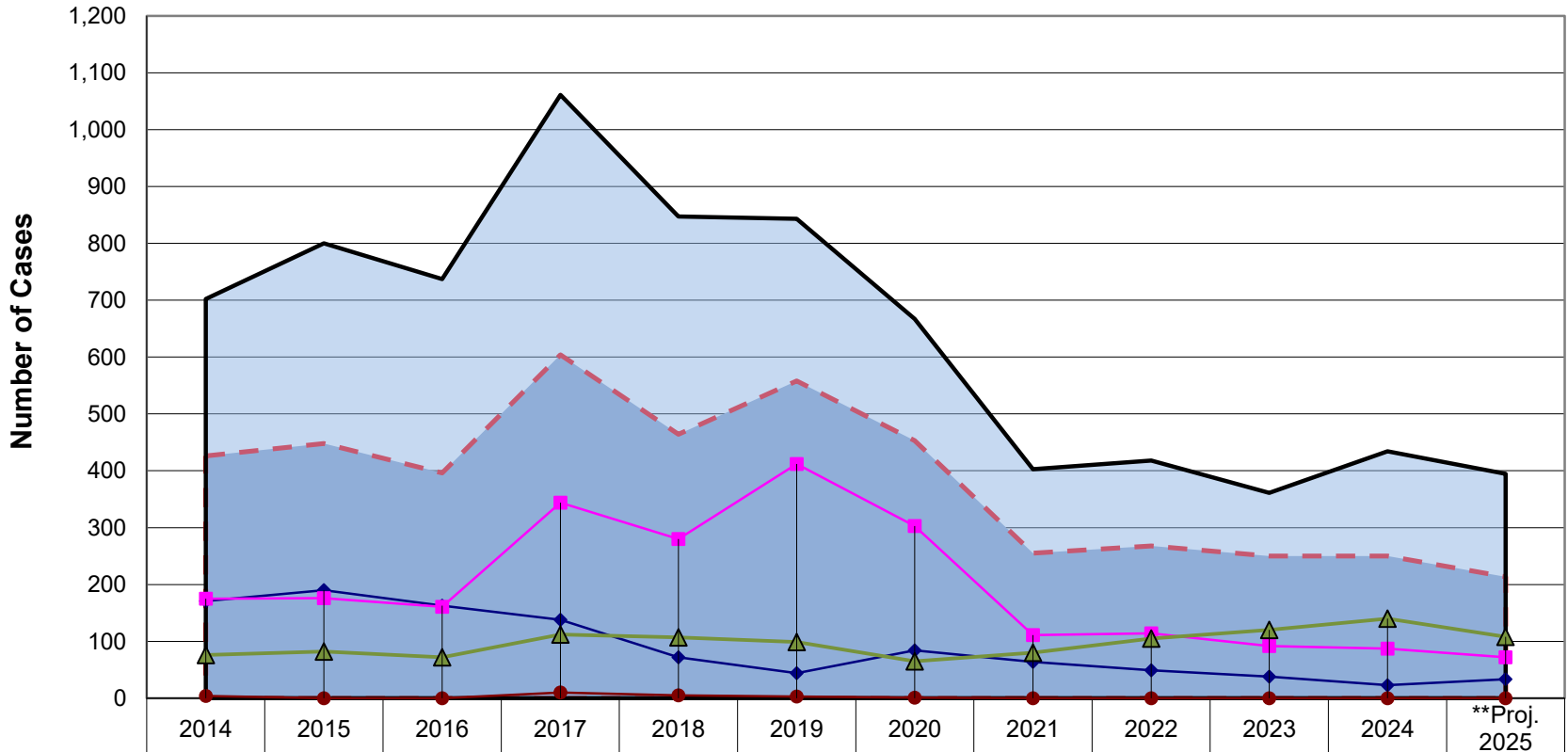
- - - Total Core
 Total Disposed
 —◆— Conciliated
 —■— Mediated to Agreement
 —▲— *Mediated w/o Agreement
 —●— Facilitated/Arbitrated

*Includes Mediated to Partial Agreement

**2025 Projection Calculated Using First through Third Quarter Reporting Data

Northern Community Mediation (Charlevoix)

Annual Comparison of Disposed Cases



	2014	2015	2016	2017	2018	2019	2020	2021	2022	2023	2024	**Proj. 2025
Total Core	426	448	396	604	464	558	453	255	268	250	250	213
Total Disposed	702	800	737	1,061	847	843	667	403	418	361	434	395
Conciliated	171	190	163	138	72	44	84	64	49	38	23	33
Mediated to Agreement	175	176	161	344	280	412	303	111	114	92	87	72
*Mediated w/o Agreement	76	82	72	112	107	99	65	80	105	120	140	108
Facilitated/Arbitrated	4	0	0	10	5	3	1	0	0	0	0	0

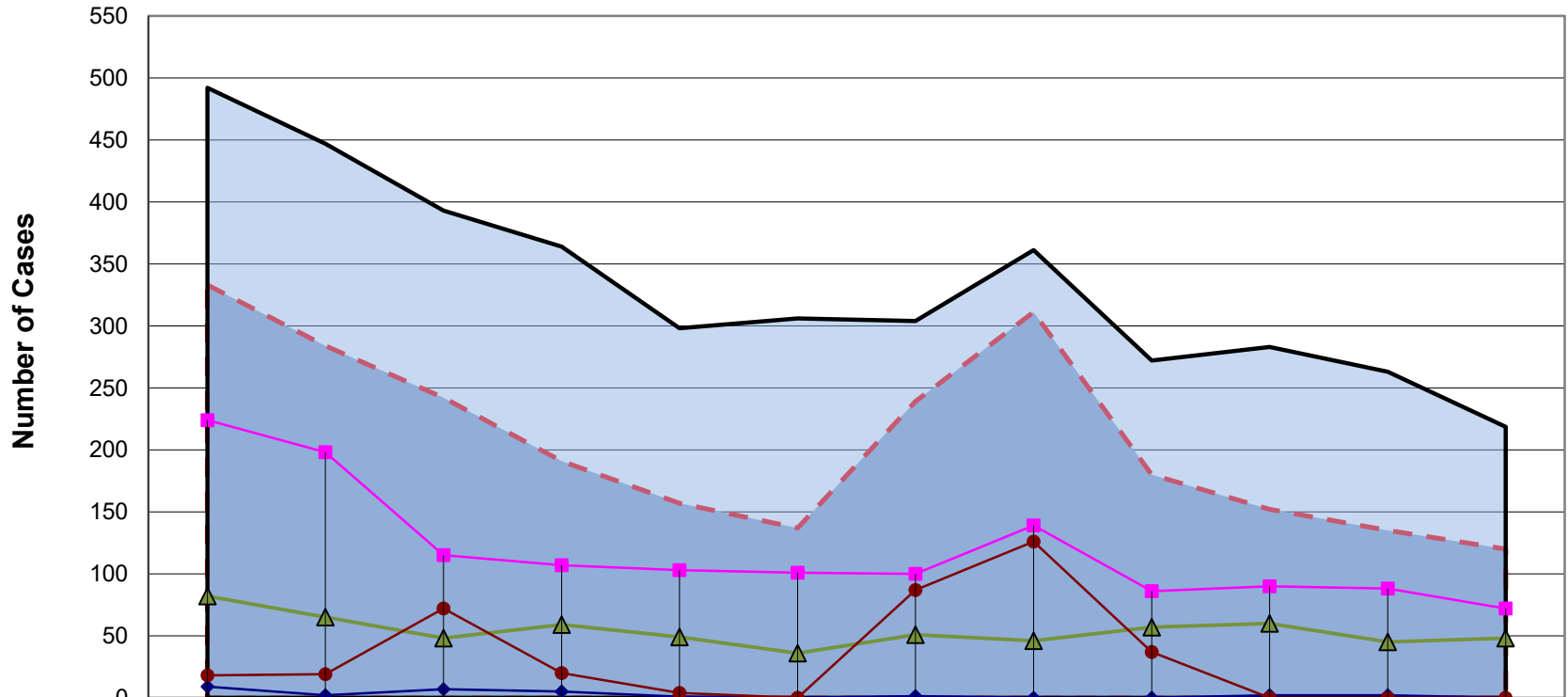
- - - Total Core
 Total Disposed
 —◆— Conciliated
 —■— Mediated to Agreement
 —▲— *Mediated w/o Agreement
 —●— Facilitated/Arbitrated

*Includes Mediated to Partial Agreement

**2025 Projection Calculated Using First through Third Quarter Reporting Data

UPCAP Services (Delta)

Annual Comparison of Disposed Cases



	2014	2015	2016	2017	2018	2019	2020	2021	2022	2023	2024	**Proj. 2025
Total Core	333	284	242	191	157	137	239	311	180	152	135	120
Total Disposed	492	447	393	364	298	306	304	361	272	283	263	219
Conciliated	9	2	7	5	1	0	1	0	0	2	2	0
Mediated to Agreement	224	198	115	107	103	101	100	139	86	90	88	72
*Mediated w/o Agreement	82	65	48	59	49	36	51	46	57	60	45	48
Facilitated/Arbitrated	18	19	72	20	4	0	87	126	37	0	0	0

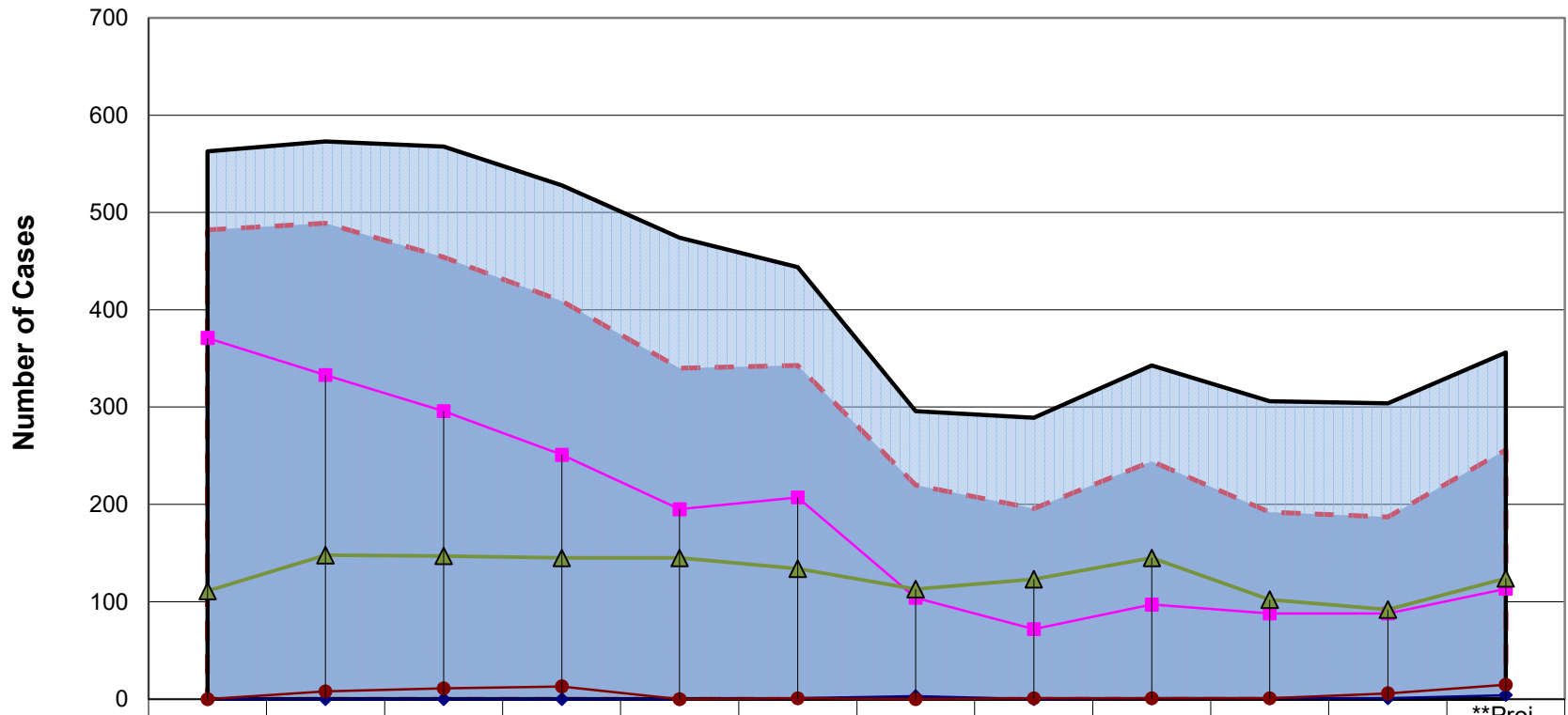
- - - Total Core
 Total Disposed
 ◆ Conciliated
 ■ Mediated to Agreement
 ▲ *Mediated w/o Agreement
 ● Facilitated/Arbitrated

*Includes Mediated to Partial Agreement

**2025 Projection Calculated Using First through Third Quarter Reporting Data

Community Resolution Center (Genesee)

Annual Comparison of Disposed Cases



	2014	2015	2016	2017	2018	2019	2020	2021	2022	2023	2024	**Proj. 2025
Total Core	482	489	454	409	340	343	220	196	244	192	187	256
Total Disposed	563	573	568	528	474	444	296	289	343	306	304	356
Conciliated	0	0	0	0	0	1	3	0	1	1	1	4
Mediated to Agreement	371	333	296	251	195	207	104	72	97	88	88	113
*Mediated w/o Agreement	111	148	147	145	145	134	113	123	145	102	92	124
Facilitated/Arbitrated	0	8	11	13	0	1	0	1	1	1	6	15

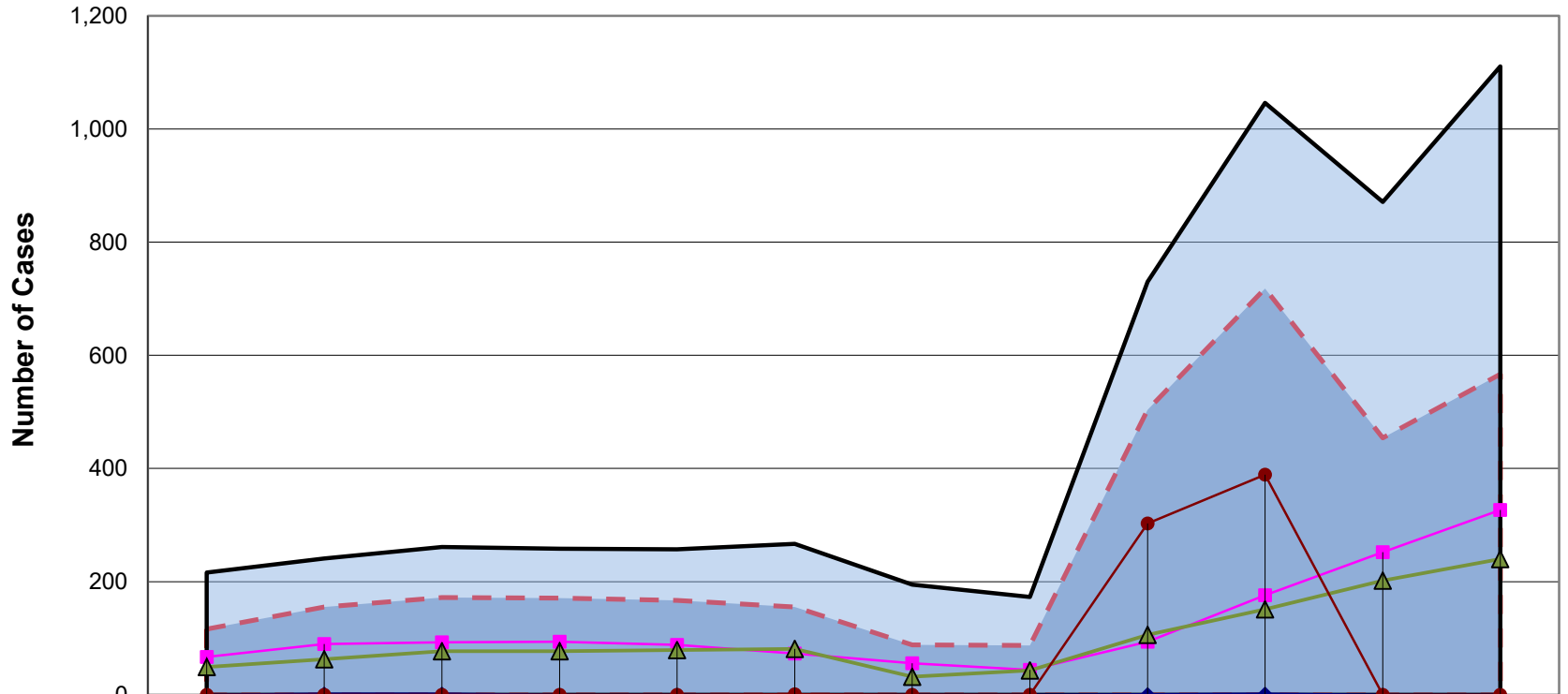
▬ Total Core
 ▬ Total Disposed
 ▬ Conciliated
 ▬ Mediated to Agreement
 ▬ *Mediated w/o Agreement
 ▬ Facilitated/Arbitrated

*Includes Mediated to Partial Agreement

**2025 Projection Calculated Using First through Third Quarter Reporting Data

Conflict Resolution Services (Grand Traverse)

Annual Comparison of Disposed Cases



	2014	2015	2016	2017	2018	2019	2020	2021	2022	2023	2024	**Proj. 2025
Total Core	116	155	172	171	167	155	88	87	504	718	454	567
Total Disposed	216	241	261	258	257	267	195	173	730	1,046	871	1,111
Conciliated	0	2	2	0	0	0	0	0	1	2	0	0
Mediated to Agreement	67	90	93	94	88	73	56	44	94	176	252	327
*Mediated w/o Agreement	49	63	77	77	79	81	32	43	106	151	202	240
Facilitated/Arbitrated	0	0	0	0	0	1	0	0	303	389	0	0

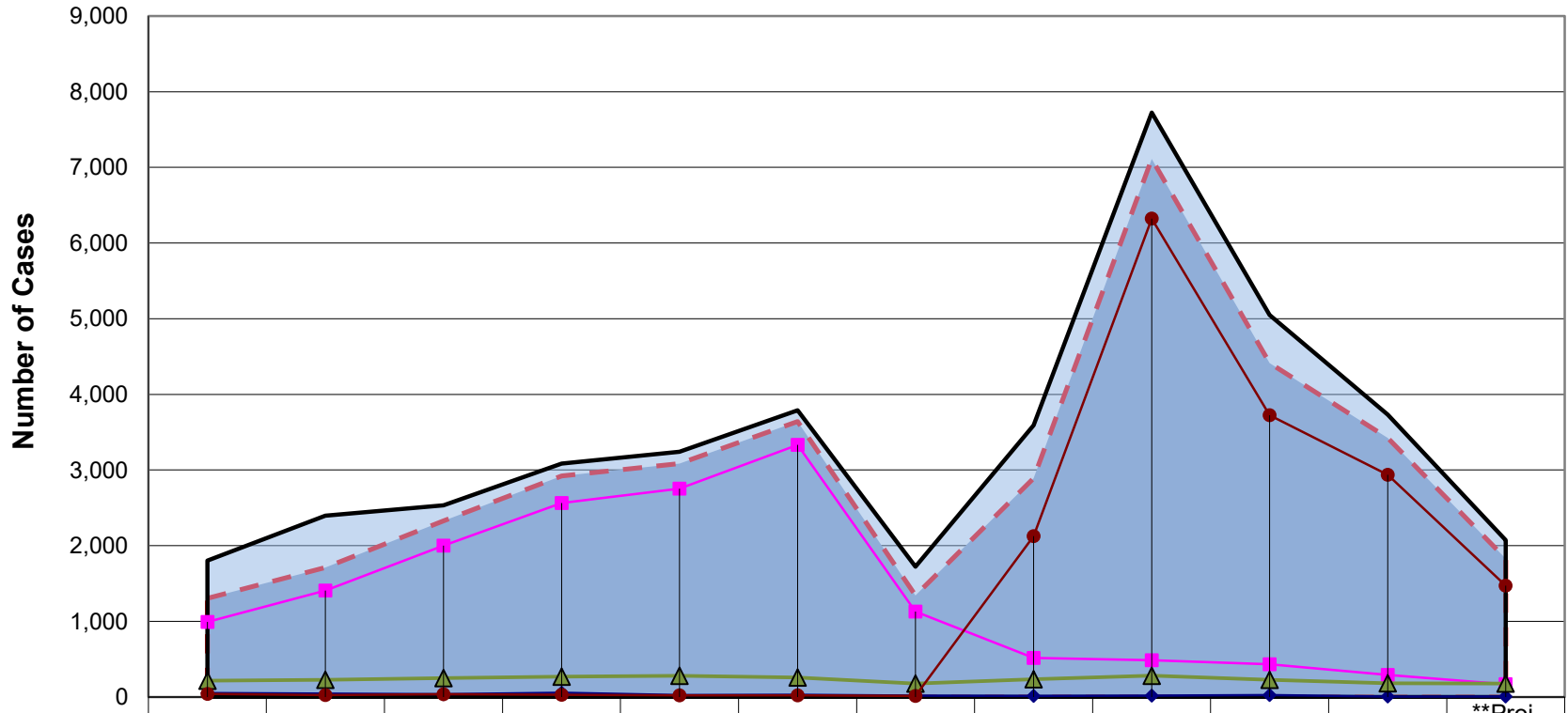
▬ Total Core
 ▬ Total Disposed
 ◆ Conciliated
 ■ Mediated to Agreement
 ▲ *Mediated w/o Agreement
 ● Facilitated/Arbitrated

*Includes Mediated to Partial Agreement

**2025 Projection Calculated Using First through Third Quarter Reporting Data

Resolution Services Center of Central Michigan (Ingham)

Annual Comparison of Disposed Cases



	2014	2015	2016	2017	2018	2019	2020	2021	2022	2023	2024	**Proj. 2025
Total Core	1,305	1,711	2,327	2,922	3,084	3,643	1,343	2,892	7,111	4,413	3,423	1,828
Total Disposed	1,804	2,395	2,535	3,084	3,241	3,788	1,724	3,591	7,724	5,049	3,732	2,075
Conciliated	51	46	37	57	27	29	19	13	20	26	6	7
Mediated to Agreement	993	1,409	2,000	2,566	2,755	3,332	1,131	517	486	435	294	169
*Mediated w/o Agreement	218	229	251	268	281	259	178	236	283	226	184	180
Facilitated/Arbitrated	43	27	39	31	21	23	15	2,126	6,322	3,726	2,939	1,472

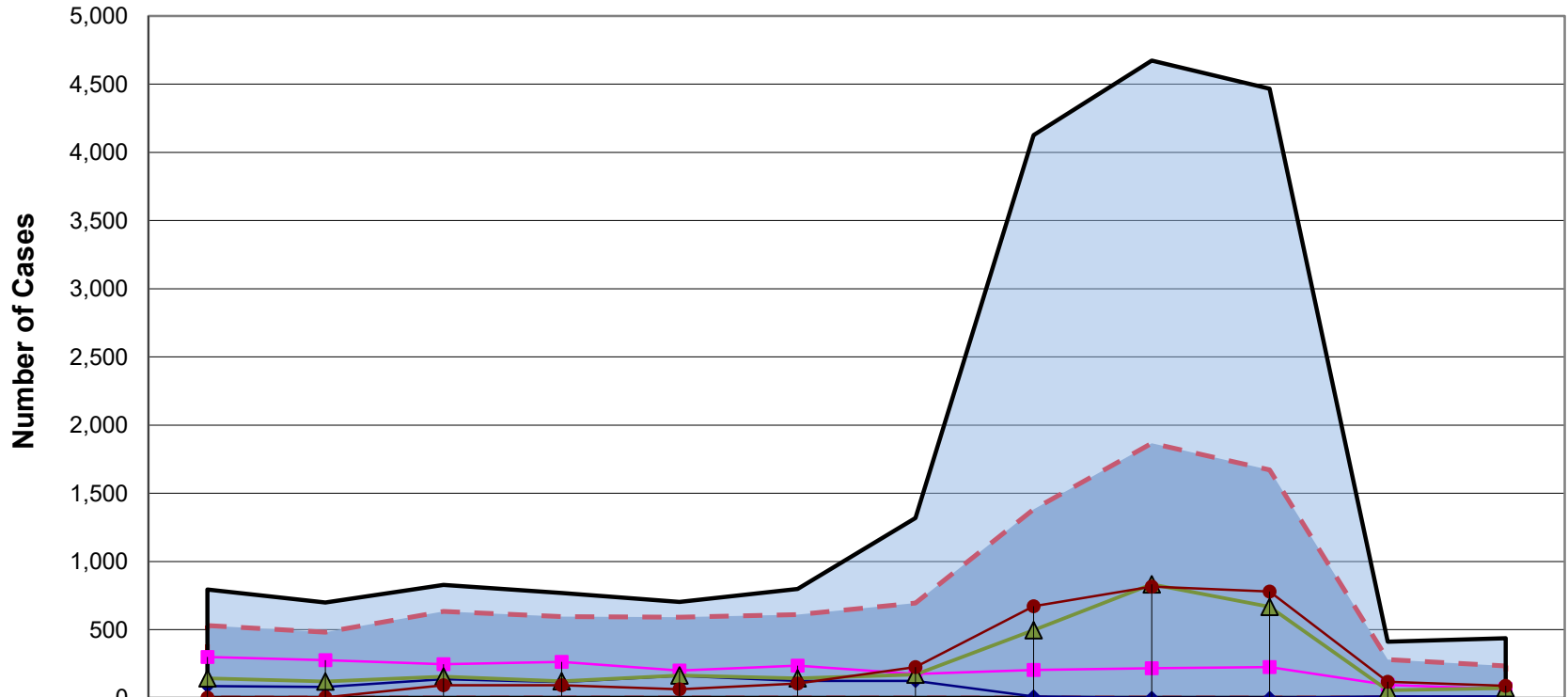
▬ Total Core
 ▬ Total Disposed
 ◆ Conciliated
 ■ Mediated to Agreement
 ▲ *Mediated w/o Agreement
 ● Facilitated/Arbitrated

*Includes Mediated to Partial Agreement

**2025 Projection Calculated Using First through Third Quarter Reporting Data

Southeastern Dispute Resolution Services (Jackson)

Annual Comparison of Disposed Cases



	2014	2015	2016	2017	2018	2019	2020	2021	2022	2023	2024	**Proj. 2025
Total Core	530	482	635	596	591	611	696	1,383	1,867	1,671	280	235
Total Disposed	794	699	828	770	703	799	1,318	4,126	4,673	4,467	413	437
Conciliated	86	80	138	116	162	125	124	10	0	0	11	9
Mediated to Agreement	300	276	248	265	201	237	176	204	218	225	95	65
*Mediated w/o Agreement	143	121	156	123	165	144	171	496	833	667	56	72
Facilitated/Arbitrated	1	5	93	92	63	105	225	673	816	779	118	88

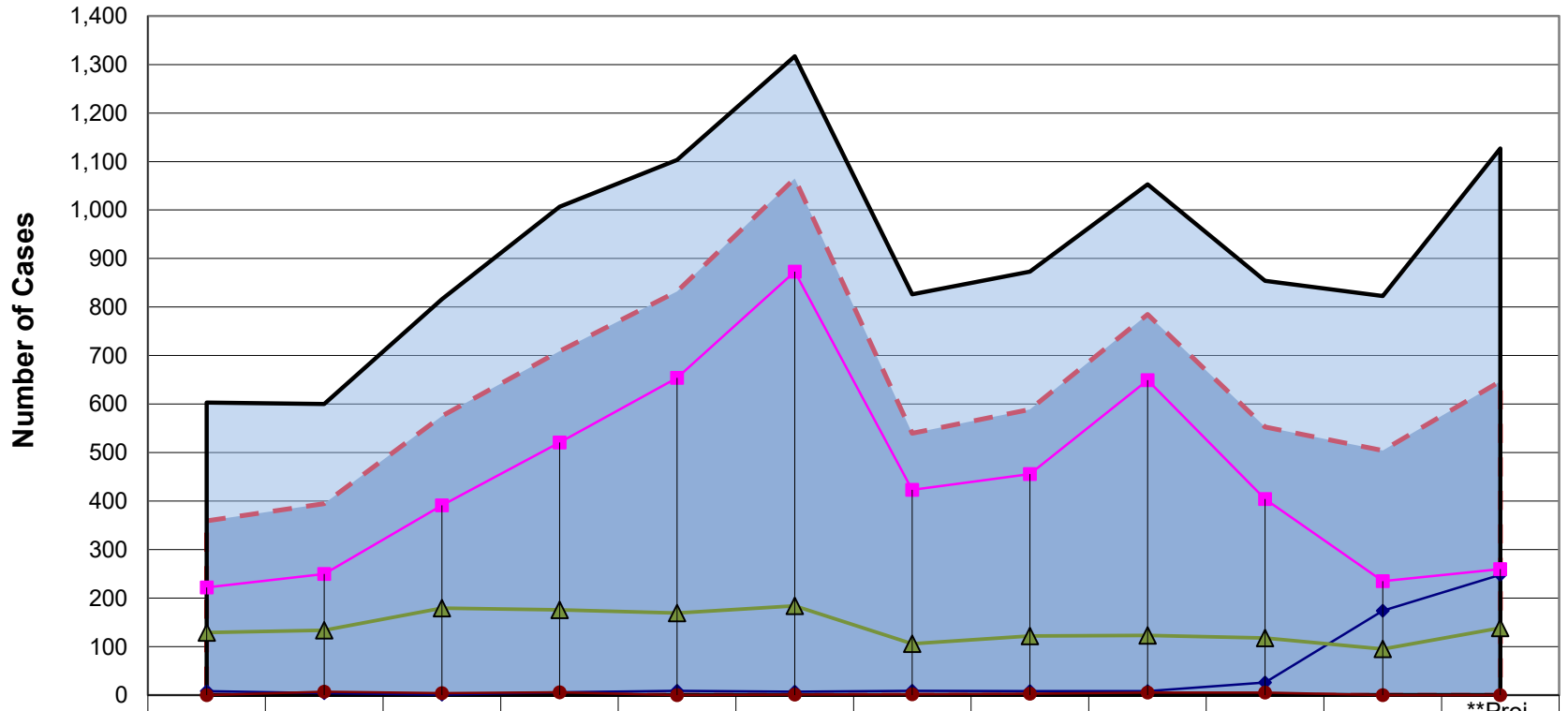
▬ Total Core
 Total Disposed
 ◆ Conciliated
 ▬ Mediated to Agreement
 ▲ *Mediated w/o Agreement
 ● Facilitated/Arbitrated

*Includes Mediated to Partial Agreement

**2025 Projection Calculated Using First through Third Quarter Reporting Data

Dispute Resolution Center of West Michigan (Kent)

Annual Comparison of Disposed Cases



	2014	2015	2016	2017	2018	2019	2020	2021	2022	2023	2024	**Proj. 2025
Total Core	359	395	575	709	832	1,065	540	589	785	553	504	647
Total Disposed	603	600	816	1,007	1,103	1,317	826	873	1,053	854	823	1,127
Conciliated	8	4	1	6	9	7	9	8	8	26	174	248
Mediated to Agreement	222	250	391	521	654	873	423	456	649	404	235	260
*Mediated w/o Agreement	129	134	179	176	169	184	106	122	123	118	95	139
Facilitated/Arbitrated	0	7	4	6	0	1	2	3	5	5	0	0

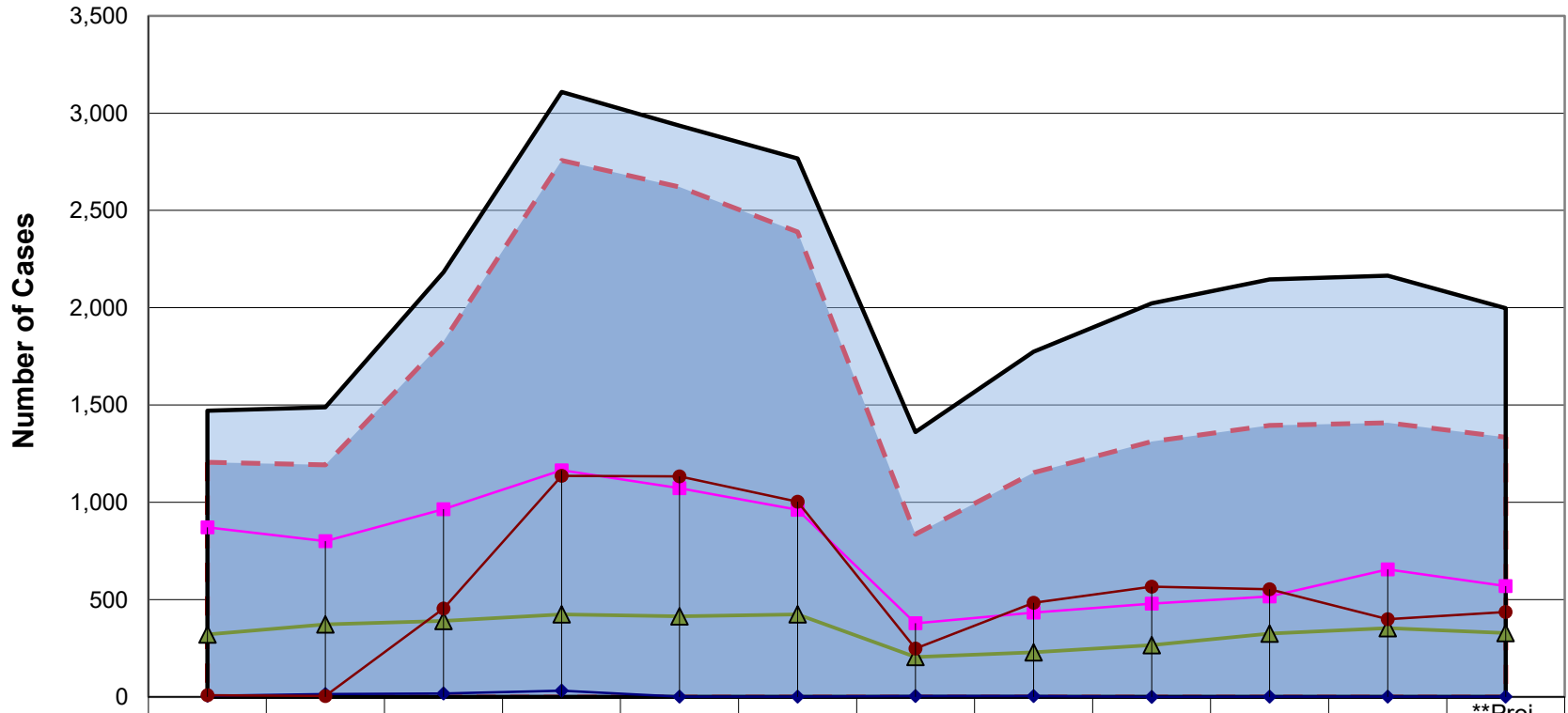
- - - Total Core
 Total Disposed
 —●— Conciliated
 —■— Mediated to Agreement
 —▲— *Mediated w/o Agreement
 —●— Facilitated/Arbitrated

*Includes Mediated to Partial Agreement

**2025 Projection Calculated Using First through Third Quarter Reporting Data

The Resolution Center (Macomb)

Annual Comparison of Disposed Cases



	2014	2015	2016	2017	2018	2019	2020	2021	2022	2023	2024	**Proj. 2025
Total Core	1,206	1,192	1,828	2,757	2,620	2,390	836	1,152	1,313	1,396	1,409	1,335
Total Disposed	1,471	1,489	2,183	3,109	2,936	2,767	1,361	1,774	2,022	2,146	2,165	1,997
Conciliated	6	14	18	32	1	1	4	5	0	1	1	1
Mediated to Agreement	871	800	965	1,165	1,072	962	378	434	480	517	656	569
*Mediated w/o Agreement	321	373	391	424	414	424	205	229	266	325	353	328
Facilitated/Arbitrated	8	5	454	1,136	1,133	1,003	249	484	567	553	399	436

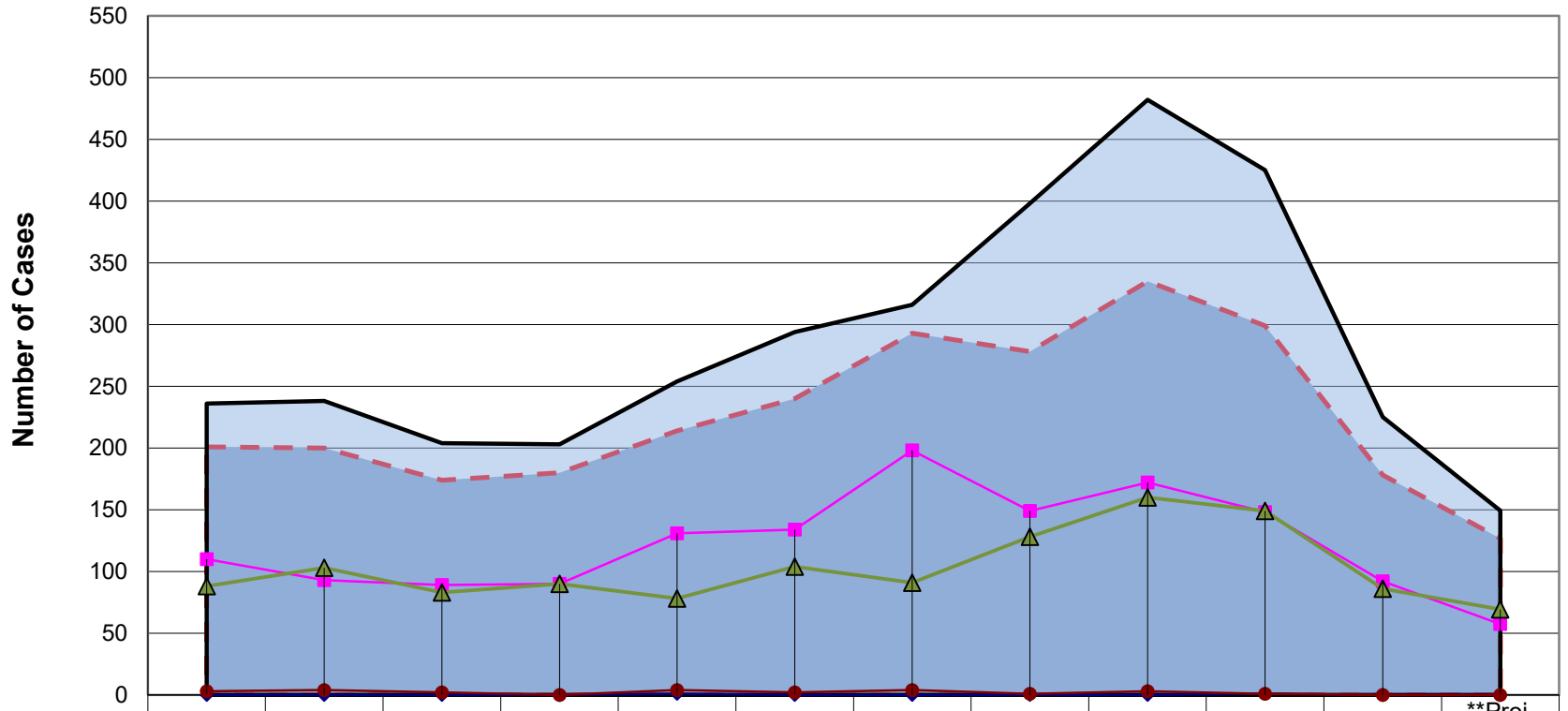
- - - Total Core
 Total Disposed
 ◆ Conciliated
 ■ Mediated to Agreement
 ▲ *Mediated w/o Agreement
 ● Facilitated/Arbitrated

*Includes Mediated to Partial Agreement

**2025 Projection Calculated Using First through Third Quarter Reporting Data

Marquette-Alger Resolution Service (Marquette)

Annual Comparison of Disposed Cases



	2014	2015	2016	2017	2018	2019	2020	2021	2022	2023	2024	**Proj. 2025
Total Core	201	200	174	180	214	240	293	278	335	299	178	127
Total Disposed	236	238	204	203	254	294	316	398	482	425	225	149
Conciliated	0	0	0	0	1	0	0	0	0	1	0	0
Mediated to Agreement	110	93	89	90	131	134	198	149	172	148	92	57
*Mediated w/o Agreement	88	103	83	90	78	104	91	128	160	149	86	69
Facilitated/Arbitrated	3	4	2	0	4	2	4	1	3	1	0	0

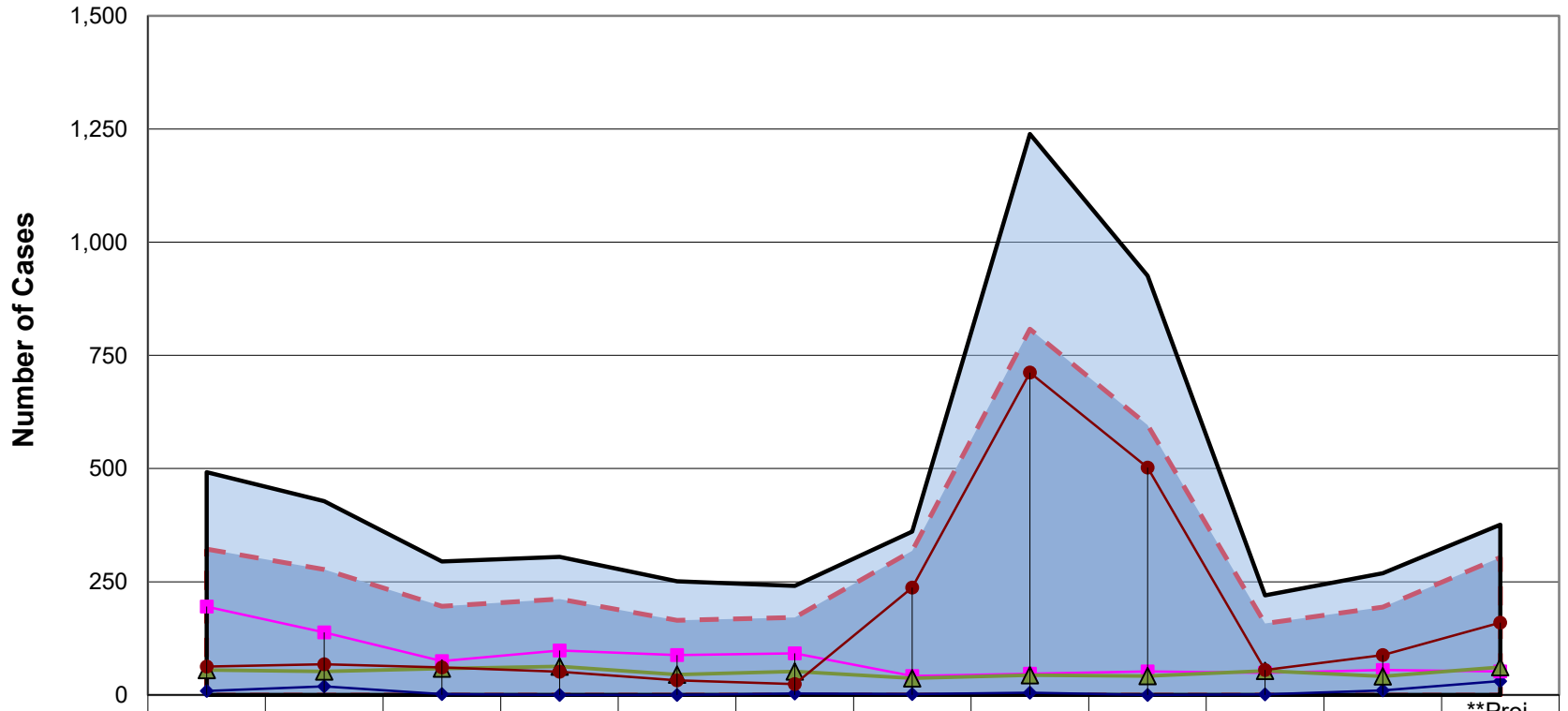
- - - Total Core
 Total Disposed
 —◆— Conciliated
 —■— Mediated to Agreement
 —▲— *Mediated w/o Agreement
 —●— Facilitated/Arbitrated

*Includes Mediated to Partial Agreement

**2025 Projection Calculated Using First through Third Quarter Reporting Data

Mediation & Restorative Services (Muskegon)

Annual Comparison of Disposed Cases



	2014	2015	2016	2017	2018	2019	2020	2021	2022	2023	2024	**Proj. 2025
Total Core	322	277	196	212	165	171	318	808	596	158	194	304
Total Disposed	492	428	295	305	251	241	361	1,239	926	220	269	376
Conciliated	9	19	2	0	0	3	2	5	0	1	10	31
Mediated to Agreement	195	138	75	98	88	92	42	47	52	49	55	52
*Mediated w/o Agreement	55	52	58	63	45	52	37	44	42	53	41	61
Facilitated/Arbitrated	63	68	61	51	32	24	237	712	502	55	88	160

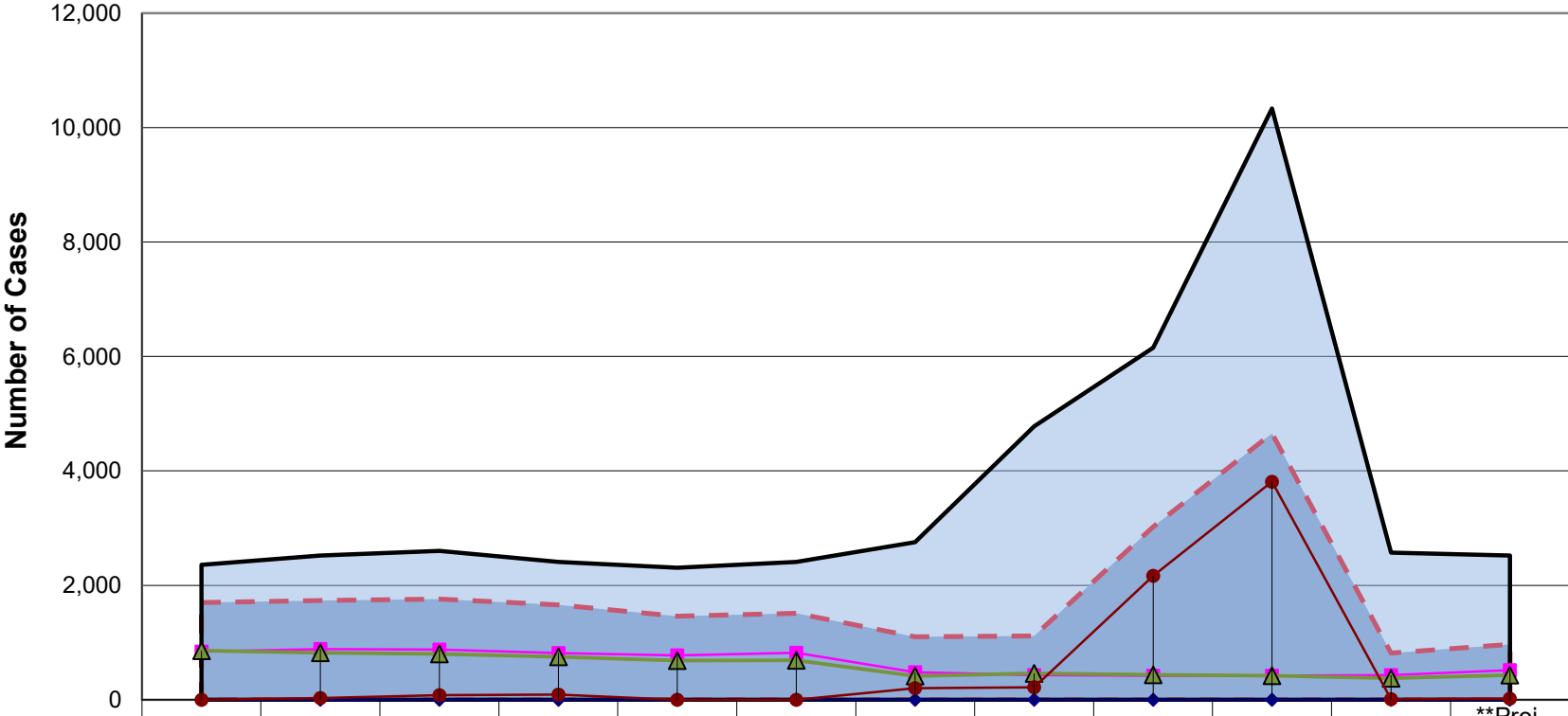
- - - Total Core
 Total Disposed
 ◆ Conciliated
 ■ Mediated to Agreement
 ▲ *Mediated w/o Agreement
 ● Facilitated/Arbitrated

*Includes Mediated to Partial Agreement

**2025 Projection Calculated Using First through Third Quarter Reporting Data

Oakland Mediation Center

Annual Comparison of Disposed Cases



	2014	2015	2016	2017	2018	2019	2020	2021	2022	2023	2024	**Proj. 2025
Total Core	1,700	1,735	1,762	1,660	1,462	1,512	1,101	1,114	3,023	4,655	815	968
Total Disposed	2,357	2,519	2,601	2,409	2,310	2,408	2,756	4,778	6,154	10,334	2,574	2,523
Conciliated	0	0	1	0	0	0	1	0	0	0	0	0
Mediated to Agreement	841	886	877	818	778	823	480	433	421	421	429	515
*Mediated w/o Agreement	859	820	802	750	683	689	416	463	437	422	377	432
Facilitated/Arbitrated	0	29	82	92	1	0	204	218	2,165	3,812	9	21

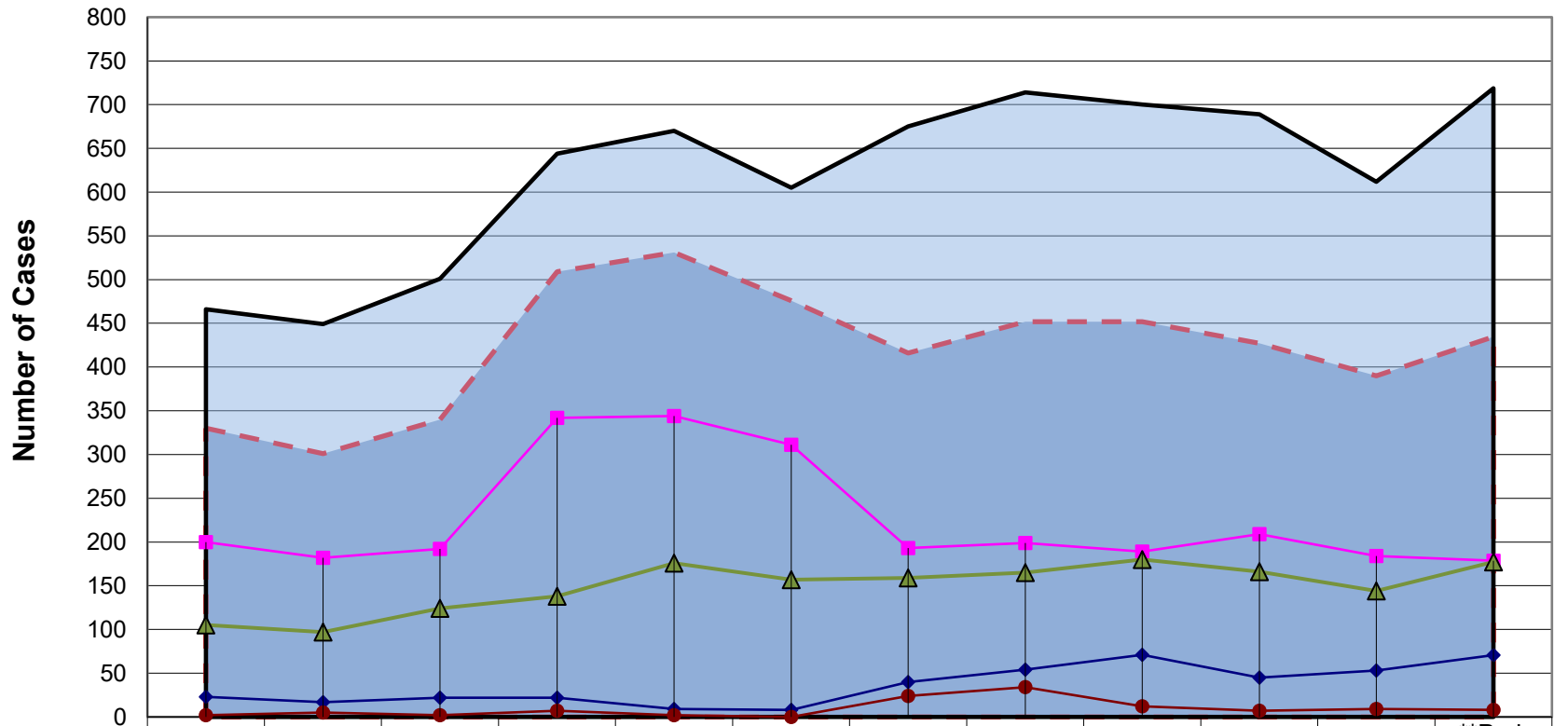
▬ Total Core
 ▬ Total Disposed
 ◆ Conciliated
 ■ Mediated to Agreement
 ▲ *Mediated w/o Agreement
 ● Facilitated/Arbitrated

*Includes Mediated to Partial Agreement

**2025 Projection Calculated Using First through Third Quarter Reporting Data

Community Mediation Services (Otsego)

Annual Comparison of Disposed Cases



	2014	2015	2016	2017	2018	2019	2020	2021	2022	2023	2024	**Proj. 2025
Total Core	330	301	340	509	531	476	416	452	452	427	390	435
Total Disposed	466	449	501	644	670	605	675	714	700	689	612	719
Conciliated	23	17	22	22	9	8	40	54	71	45	53	71
Mediated to Agreement	200	182	192	342	344	311	193	199	189	209	184	179
*Mediated w/o Agreement	105	97	124	138	176	157	159	165	180	166	144	177
Facilitated/Arbitrated	2	5	2	7	2	0	24	34	12	7	9	8

- - - Total Core
 Total Disposed
 —◆— Conciliated
 —■— Mediated to Agreement
 —▲— *Mediated w/o Agreement
 —●— Facilitated/Arbitrated

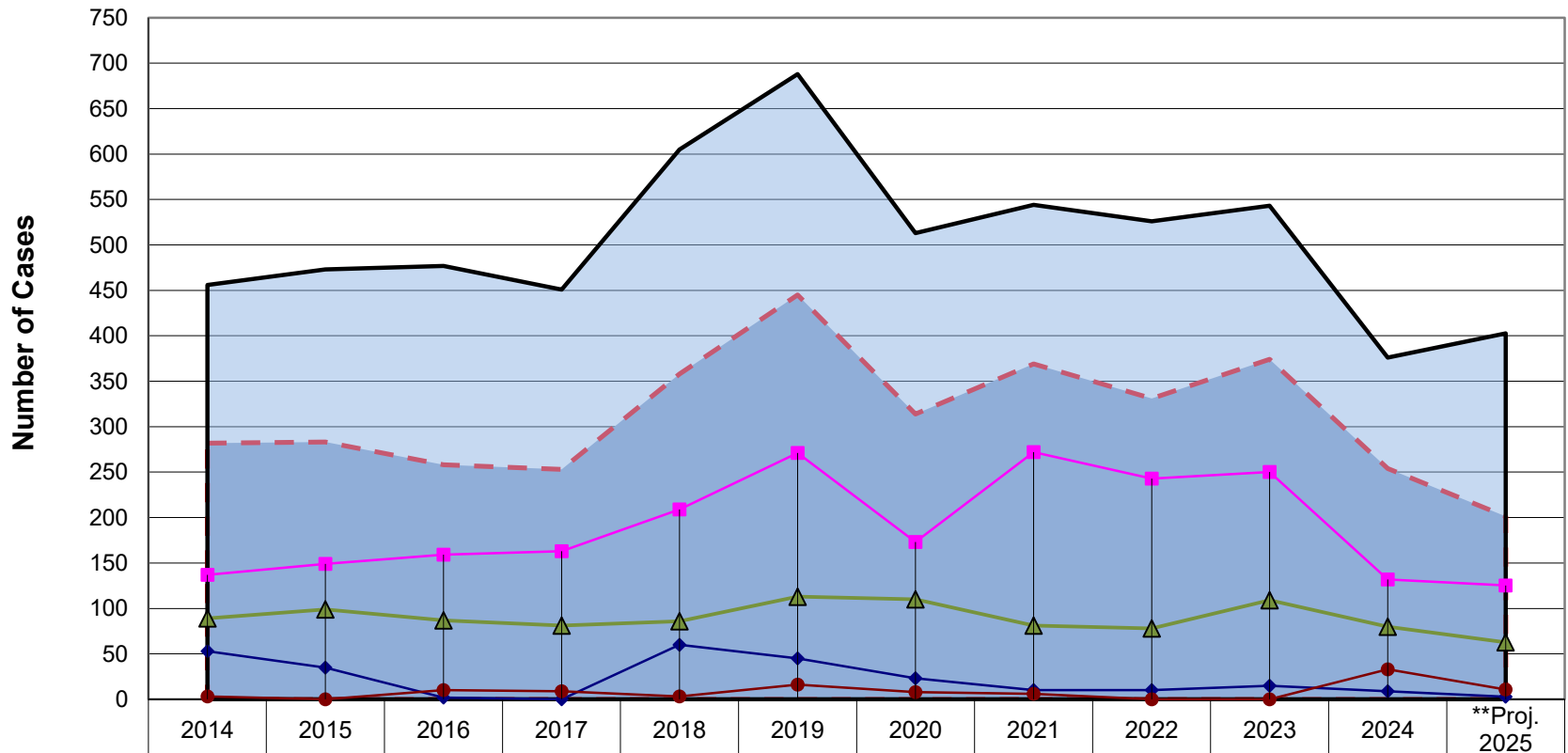
*Includes Mediated to Partial Agreement

**2025 Projection Calculated Using First through Third Quarter Reporting Data

Date Prepared: 10/16/2025

Mediation Services (Ottawa)

Annual Comparison of Disposed Cases



	2014	2015	2016	2017	2018	2019	2020	2021	2022	2023	2024	**Proj. 2025
Total Core	282	283	258	253	358	445	314	369	331	374	254	201
Total Disposed	456	473	477	451	605	688	513	544	526	543	376	403
Conciliated	53	35	2	0	60	45	23	10	10	15	9	3
Mediated to Agreement	137	149	159	163	209	271	173	272	243	250	132	125
*Mediated w/o Agreement	89	99	87	81	86	113	110	81	78	109	80	63
Facilitated/Arbitrated	3	0	10	9	3	16	8	6	0	0	33	11

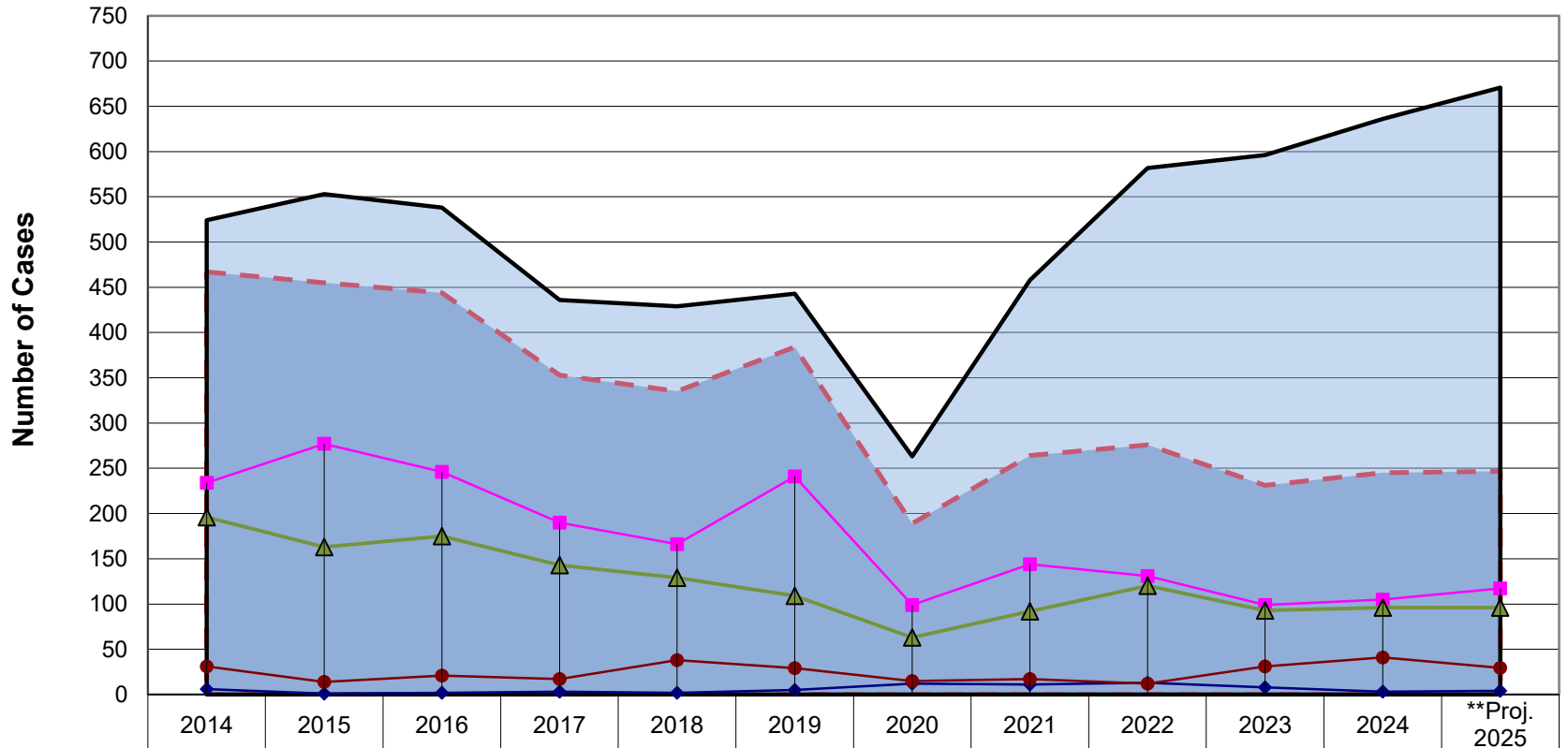
▬ Total Core
 Total Disposed
 ◆ Conciliated
 ■ Mediated to Agreement
 ▲ *Mediated w/o Agreement
 ● Facilitated/Arbitrated

*Includes Mediated to Partial Agreement

**2025 Projection Calculated Using First through Third Quarter Reporting Data

The Dispute Resolution Center (Washtenaw)

Annual Comparison of Disposed Cases



	2014	2015	2016	2017	2018	2019	2020	2021	2022	2023	2024	**Proj. 2025
Total Core	467	455	444	353	335	384	189	264	276	231	245	247
Total Disposed	524	553	538	436	429	443	263	458	582	596	636	671
Conciliated	6	1	2	3	2	5	12	11	13	8	3	4
Mediated to Agreement	234	277	246	190	166	241	99	144	131	99	105	117
*Mediated w/o Agreement	196	163	175	143	129	109	63	92	120	93	96	96
Facilitated/Arbitrated	31	14	21	17	38	29	15	17	12	31	41	29

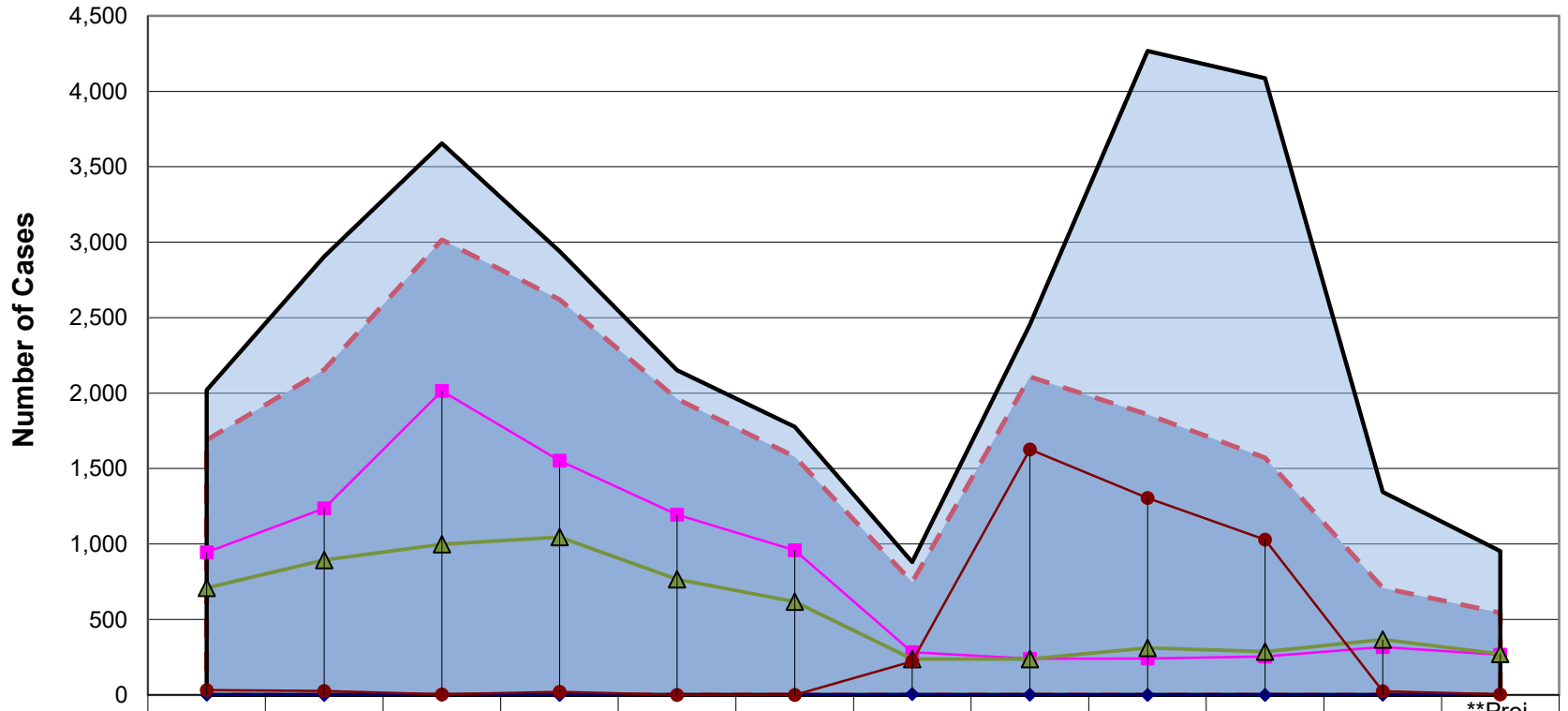
- - - Total Core
 Total Disposed
 ◆ Conciliated
 ■ Mediated to Agreement
 ▲ *Mediated w/o Agreement
 ● Facilitated/Arbitrated

*Includes Mediated to Partial Agreement

**2025 Projection Calculated Using First through Third Quarter Reporting Data

Wayne Mediation Center

Annual Comparison of Disposed Cases



	2014	2015	2016	2017	2018	2019	2020	2021	2022	2023	2024	**Proj. 2025
Total Core	1,689	2,156	3,016	2,619	1,961	1,579	748	2,107	1,858	1,571	709	544
Total Disposed	2,020	2,906	3,654	2,939	2,151	1,777	881	2,454	4,267	4,086	1,344	953
Conciliated	1	0	0	0	0	1	5	2	0	0	1	3
Mediated to Agreement	945	1,236	2,014	1,552	1,195	959	283	240	242	254	317	267
*Mediated w/o Agreement	710	894	998	1,046	766	619	238	238	311	288	367	272
Facilitated/Arbitrated	33	26	4	21	0	0	222	1,627	1,305	1,029	24	3

▬ Total Core
 Total Disposed
 ◆ Conciliated
 ■ Mediated to Agreement
 ▲ *Mediated w/o Agreement
 ● Facilitated/Arbitrated

*Includes Mediated to Partial Agreement

**2025 Projection Calculated Using First through Third Quarter Reporting Data