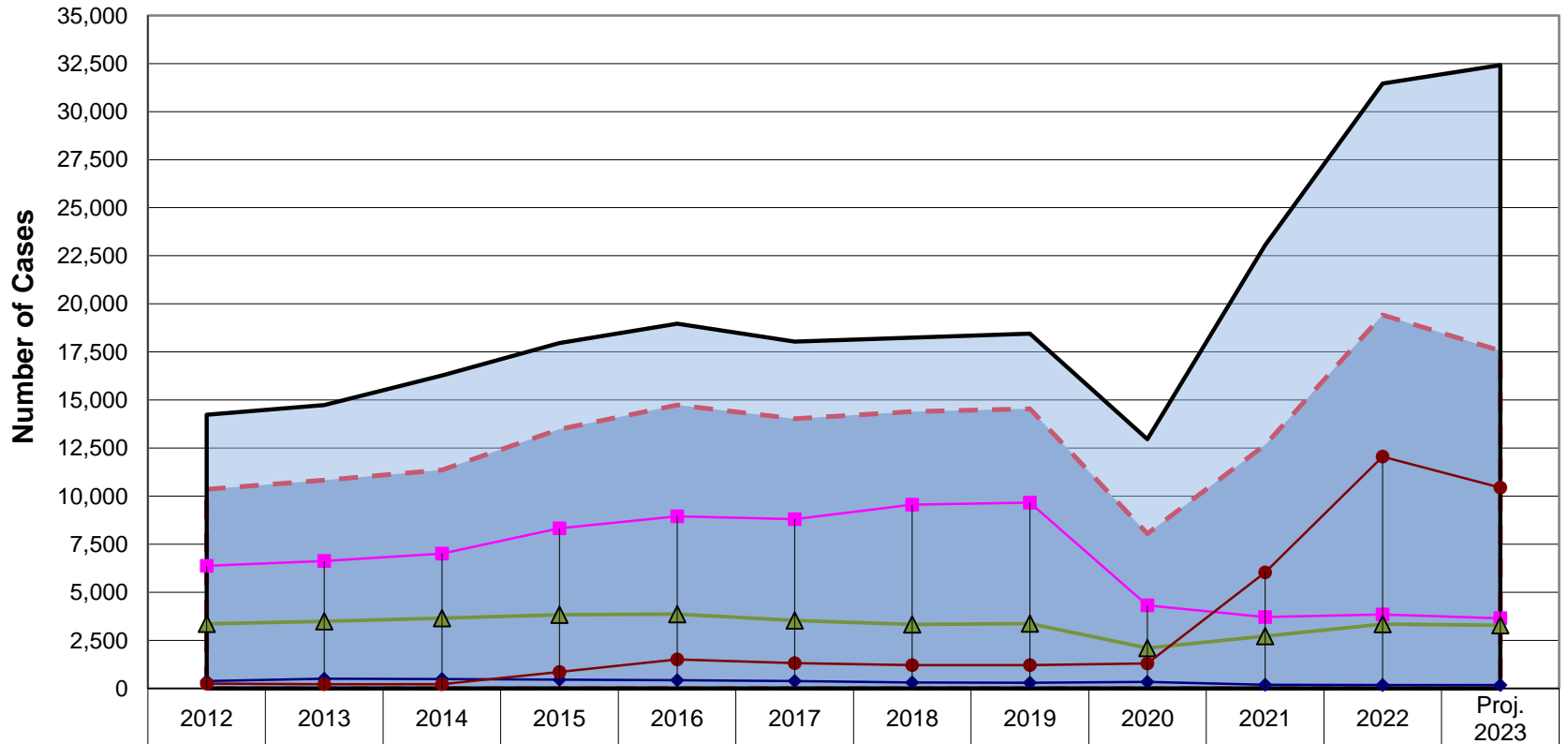


CDRP Statewide Trend Report

Annual Comparison of Disposed Cases



	2012	2013	2014	2015	2016	2017	2018	2019	2020	2021	2022	Proj. 2023
Total Core	10,359	10,832	11,370	13,472	14,743	14,028	14,390	14,543	8,053	12,659	19,423	17,563
Total Disposed	14,239	14,735	16,274	17,956	18,968	18,036	18,243	18,449	12,955	23,054	31,456	32,417
Conciliated	390	505	485	454	423	377	302	297	336	195	176	181
Mediated to Agreement	6,369	6,623	7,010	8,330	8,950	8,807	9,558	9,663	4,319	3,713	3,848	3,648
*Mediated w/o Agreement	3,358	3,485	3,650	3,825	3,866	3,535	3,323	3,375	2,101	2,718	3,346	3,289
Facilitated/Arbitrated	253	219	225	863	1,504	1,309	1,207	1,208	1,297	6,033	12,053	10,444

- - - Total Core
 Total Disposed
 —◆— Conciliated
 —■— Mediated to Agreement
 —▲— *Mediated w/o Agreement
 —●— Facilitated/Arbitrated

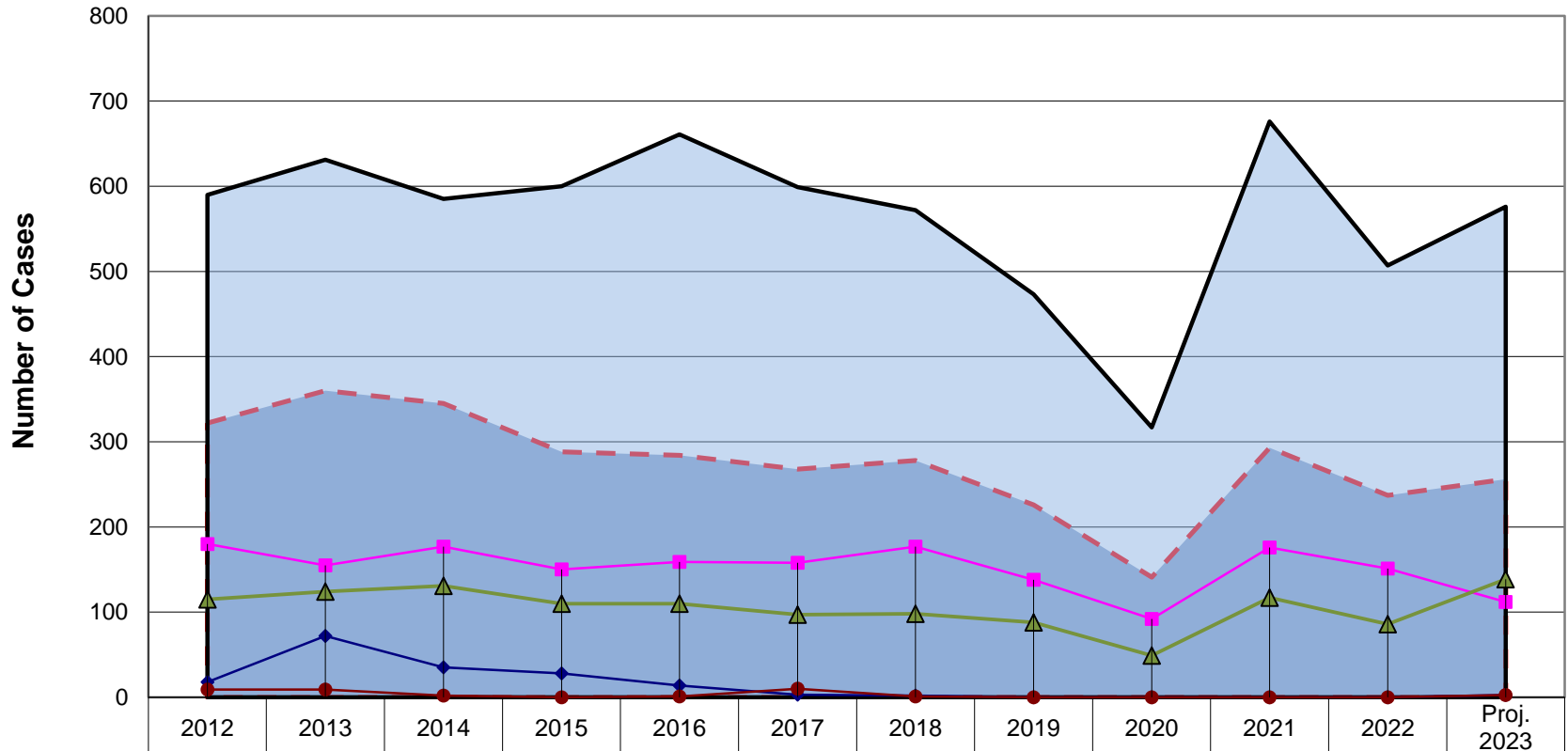
*Includes Mediated to Partial Agreement

**Projection Calculated Using First through Third Quarter Reporting Data

Date Prepared: October 20, 2023

Berrien Trend Report

Annual Comparison of Disposed Cases



	2012	2013	2014	2015	2016	2017	2018	2019	2020	2021	2022	Proj. 2023
Total Core	322	360	345	288	284	268	278	226	141	293	237	256
Total Disposed	590	631	585	600	661	599	572	473	317	676	507	576
Conciliated	18	72	35	28	14	3	2	0	0	0	0	3
Mediated to Agreement	180	155	177	150	159	158	177	138	92	176	151	112
*Mediated w/o Agreement	115	124	131	110	110	97	98	88	49	117	86	139
Facilitated/Arbitrated	9	9	2	0	1	10	1	0	0	0	0	3

- - - Total Core
 Total Disposed
 —◆— Conciliated
 —■— Mediated to Agreement
 —▲— *Mediated w/o Agreement
 —●— Facilitated/Arbitrated

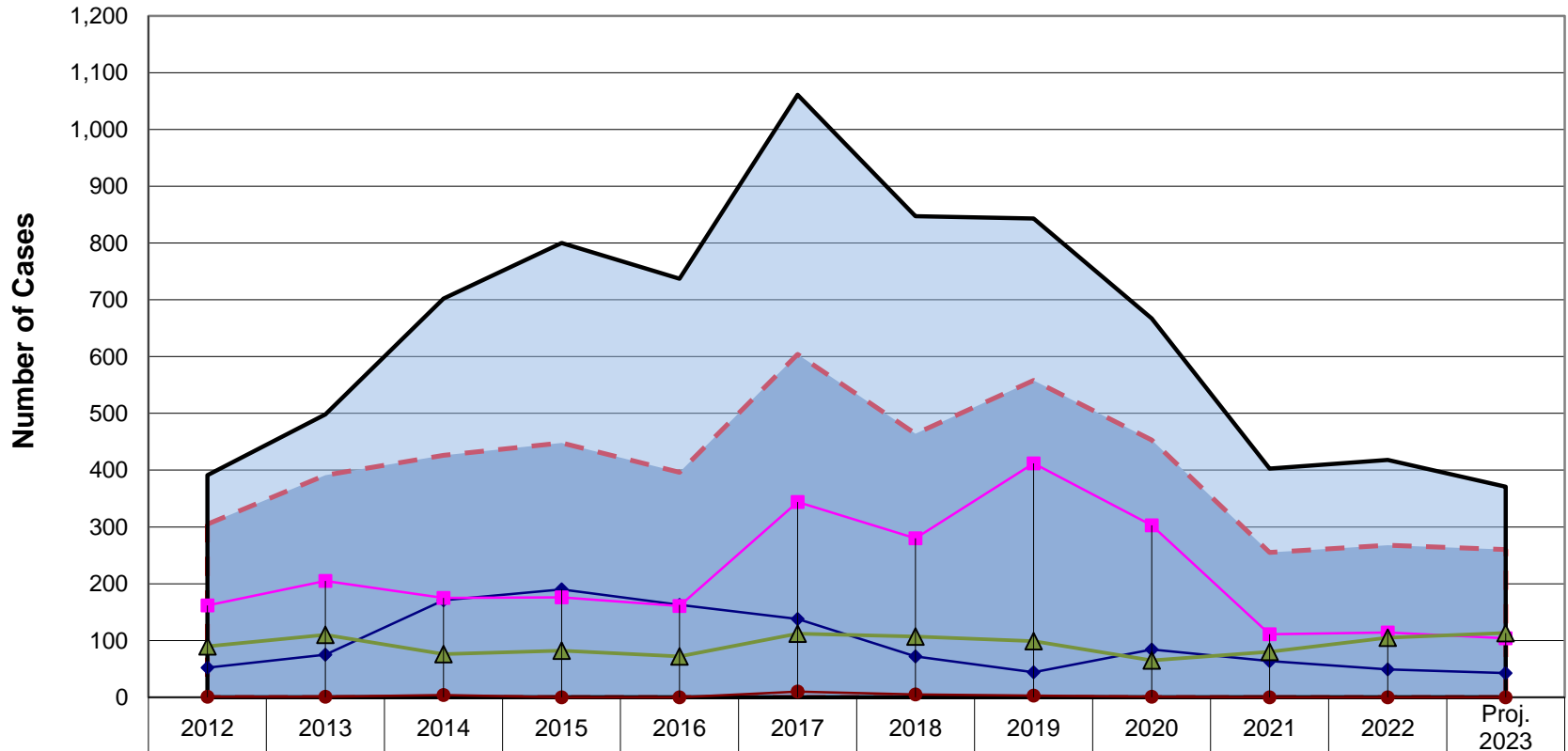
*Includes Mediated to Partial Agreement

**Projection Calculated Using First through Third Quarter Reporting Data

Date Prepared: October 20, 2023

Charlevoix Trend Report

Annual Comparison of Disposed Cases



	2012	2013	2014	2015	2016	2017	2018	2019	2020	2021	2022	Proj. 2023
Total Core	305	391	426	448	396	604	464	558	453	255	268	260
Total Disposed	391	498	702	800	737	1,061	847	843	667	403	418	371
Conciliated	52	75	171	190	163	138	72	44	84	64	49	43
Mediated to Agreement	162	205	175	176	161	344	280	412	303	111	114	104
*Mediated w/o Agreement	90	110	76	82	72	112	107	99	65	80	105	113
Facilitated/Arbitrated	1	1	4	0	0	10	5	3	1	0	0	0

▬ Total Core
 Total Disposed
 ◆ Conciliated
 ■ Mediated to Agreement
 ▲ *Mediated w/o Agreement
 ● Facilitated/Arbitrated

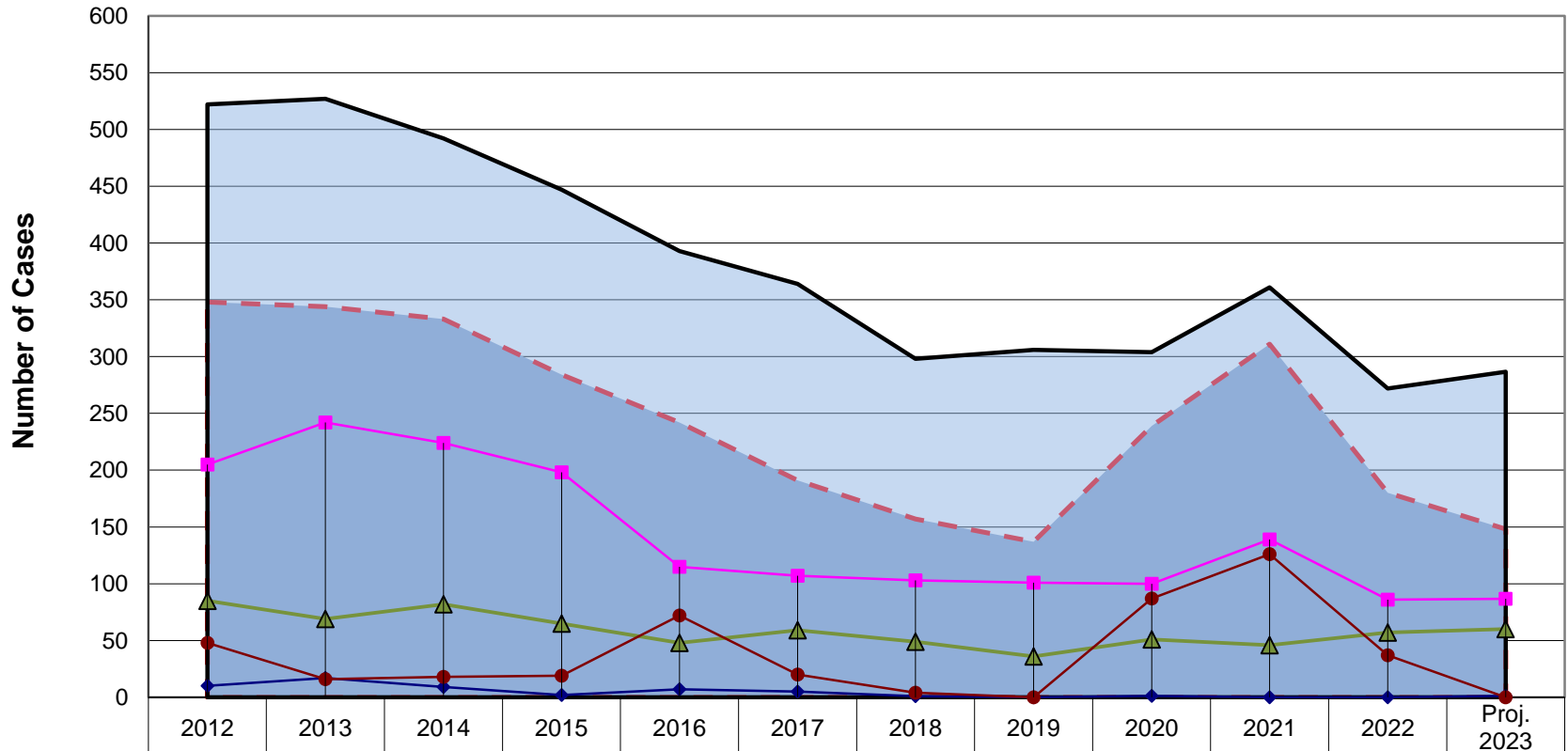
*Includes Mediated to Partial Agreement

**Projection Calculated Using First through Third Quarter Reporting Data

Date Prepared: October 20, 2023

Delta Trend Report

Annual Comparison of Disposed Cases



	2012	2013	2014	2015	2016	2017	2018	2019	2020	2021	2022	Proj. 2023
Total Core	348	344	333	284	242	191	157	137	239	311	180	148
Total Disposed	522	527	492	447	393	364	298	306	304	361	272	287
Conciliated	10	17	9	2	7	5	1	0	1	0	0	1
Mediated to Agreement	205	242	224	198	115	107	103	101	100	139	86	87
*Mediated w/o Agreement	85	69	82	65	48	59	49	36	51	46	57	60
Facilitated/Arbitrated	48	16	18	19	72	20	4	0	87	126	37	0

- - - Total Core
 Total Disposed
 ◆ Conciliated
 ■ Mediated to Agreement
 ▲ *Mediated w/o Agreement
 ● Facilitated/Arbitrated

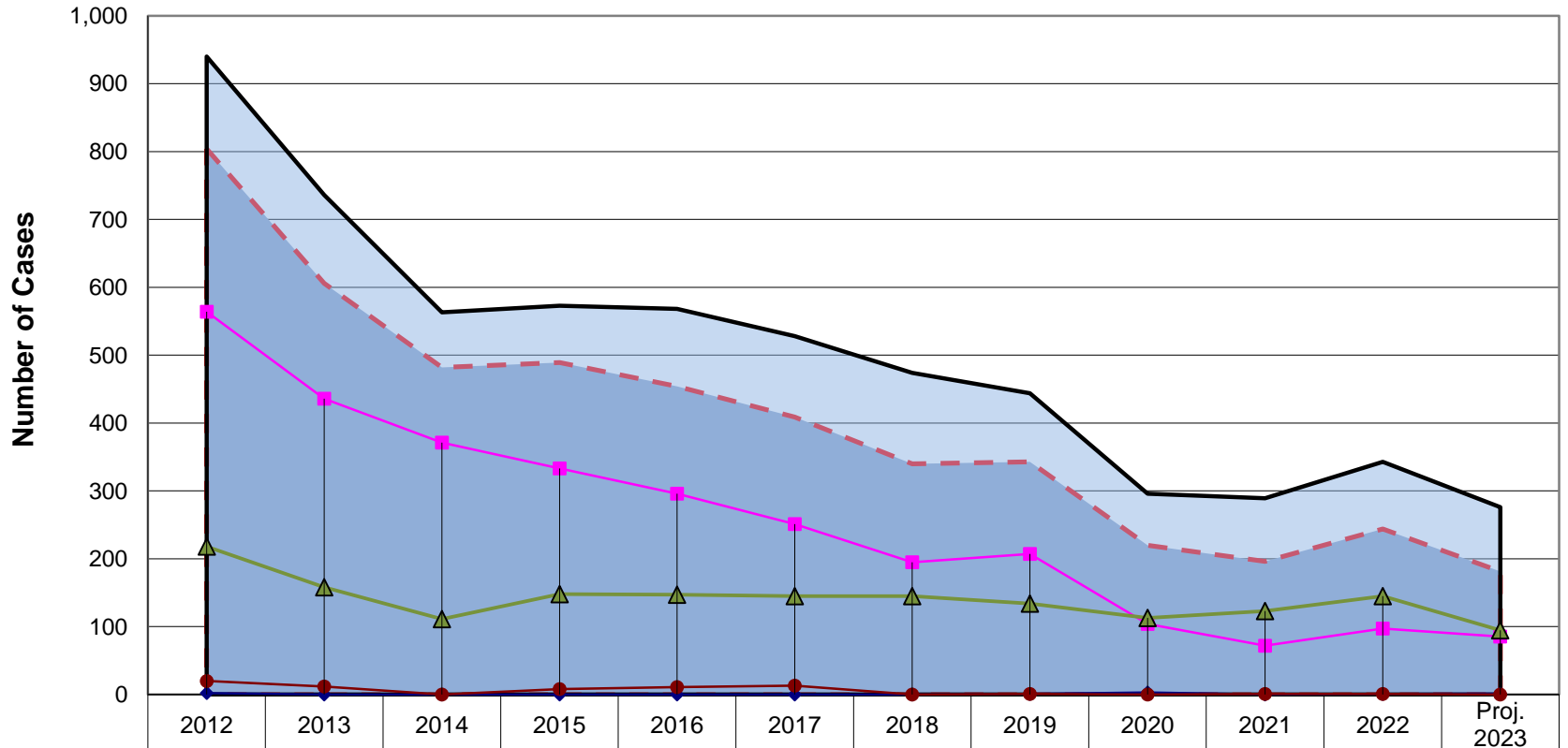
*Includes Mediated to Partial Agreement

**Projection Calculated Using First through Third Quarter Reporting Data

Date Prepared: October 20, 2023

Genesee Trend Report

Annual Comparison of Disposed Cases



	2012	2013	2014	2015	2016	2017	2018	2019	2020	2021	2022	Proj. 2023
Total Core	804	606	482	489	454	409	340	343	220	196	244	181
Total Disposed	940	736	563	573	568	528	474	444	296	289	343	276
Conciliated	2	0	0	0	0	0	0	1	3	0	1	1
Mediated to Agreement	564	436	371	333	296	251	195	207	104	72	97	85
*Mediated w/o Agreement	218	158	111	148	147	145	145	134	113	123	145	95
Facilitated/Arbitrated	20	12	0	8	11	13	0	1	0	1	1	0

- - - Total Core
 Total Disposed
 ◆ Conciliated
 ■ Mediated to Agreement
 ▲ *Mediated w/o Agreement
 ● Facilitated/Arbitrated

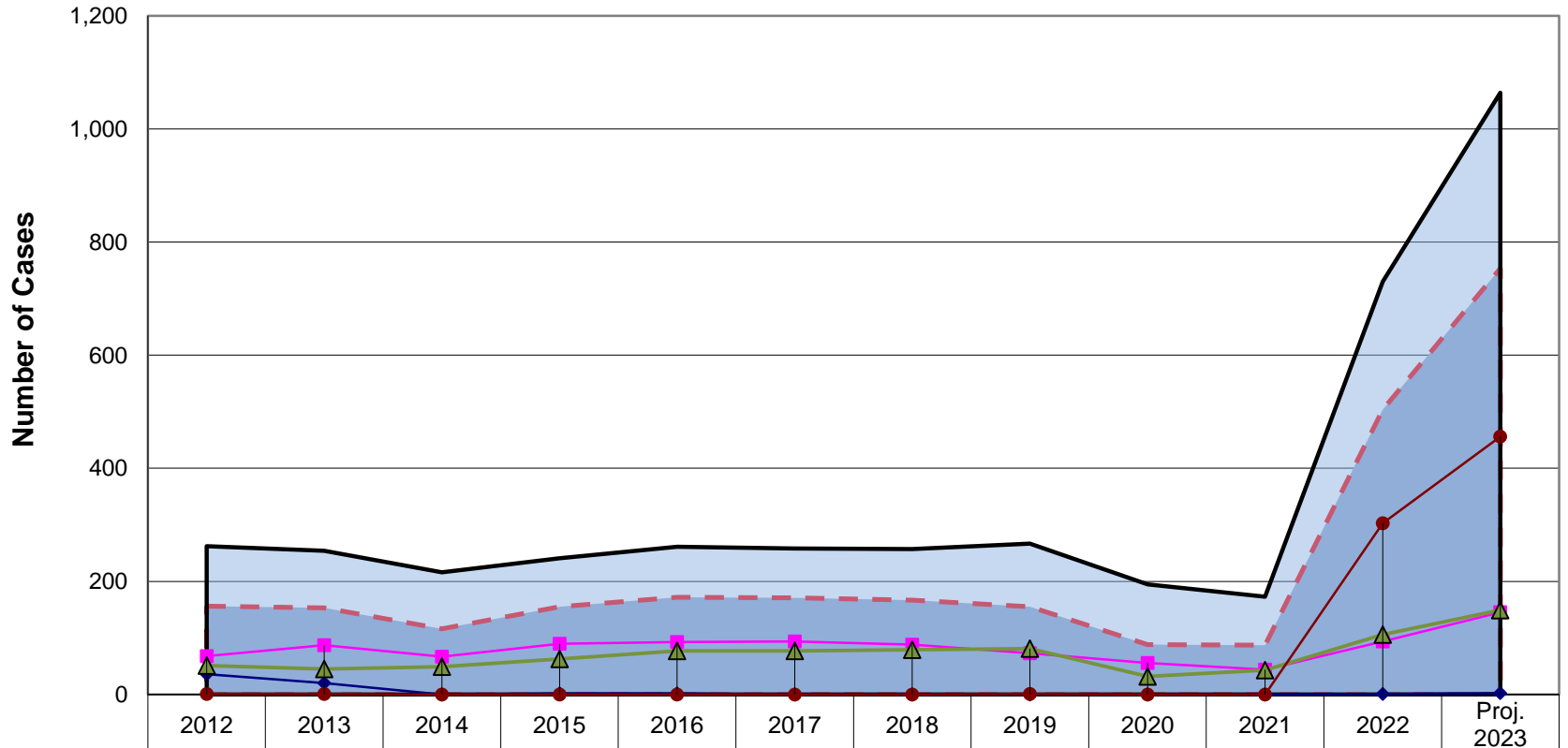
*Includes Mediated to Partial Agreement

**Projection Calculated Using First through Third Quarter Reporting Data

Date Prepared: October 20, 2023

Grand Traverse Trend Report

Annual Comparison of Disposed Cases



	2012	2013	2014	2015	2016	2017	2018	2019	2020	2021	2022	Proj. 2023
Total Core	156	153	116	155	172	171	167	155	88	87	504	753
Total Disposed	262	254	216	241	261	258	257	267	195	173	730	1,064
Conciliated	36	20	0	2	2	0	0	0	0	0	1	3
Mediated to Agreement	68	87	67	90	93	94	88	73	56	44	94	145
*Mediated w/o Agreement	51	45	49	63	77	77	79	81	32	43	106	149
Facilitated/Arbitrated	1	1	0	0	0	0	0	1	0	0	303	456

▬ Total Core
 Total Disposed
 ◆ Conciliated
 ■ Mediated to Agreement
 ▲ *Mediated w/o Agreement
 ● Facilitated/Arbitrated

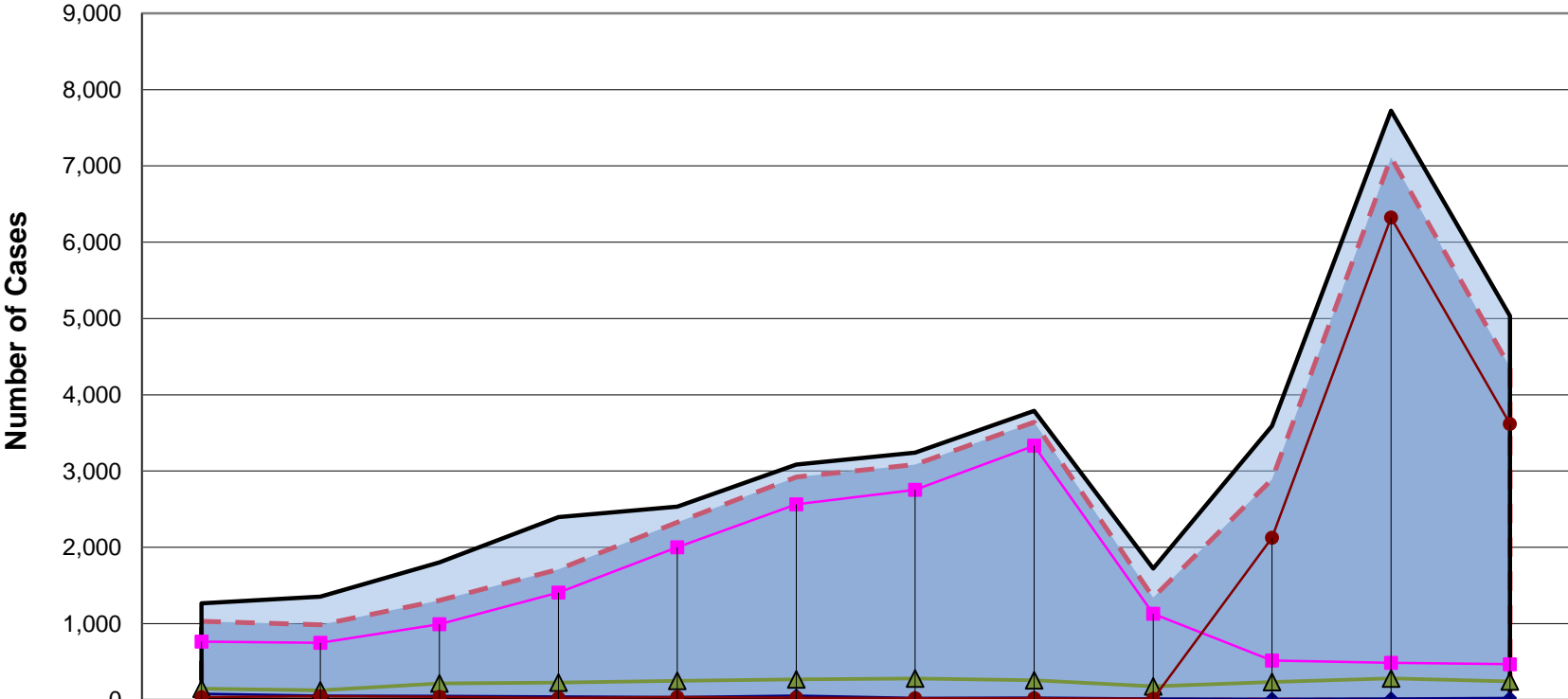
*Includes Mediated to Partial Agreement

**Projection Calculated Using First through Third Quarter Reporting Data

Date Prepared: October 20, 2023

Ingham Trend Report

Annual Comparison of Disposed Cases



	2012	2013	2014	2015	2016	2017	2018	2019	2020	2021	2022	Proj. 2023
Total Core	1,030	984	1,305	1,711	2,327	2,922	3,084	3,643	1,343	2,892	7,111	4,360
Total Disposed	1,265	1,354	1,804	2,395	2,535	3,084	3,241	3,788	1,724	3,591	7,724	5,033
Conciliated	81	57	51	46	37	57	27	29	19	13	20	28
Mediated to Agreement	764	750	993	1,409	2,000	2,566	2,755	3,332	1,131	517	486	469
*Mediated w/o Agreement	149	127	218	229	251	268	281	259	178	236	283	244
Facilitated/Arbitrated	36	50	43	27	39	31	21	23	15	2,126	6,322	3,619

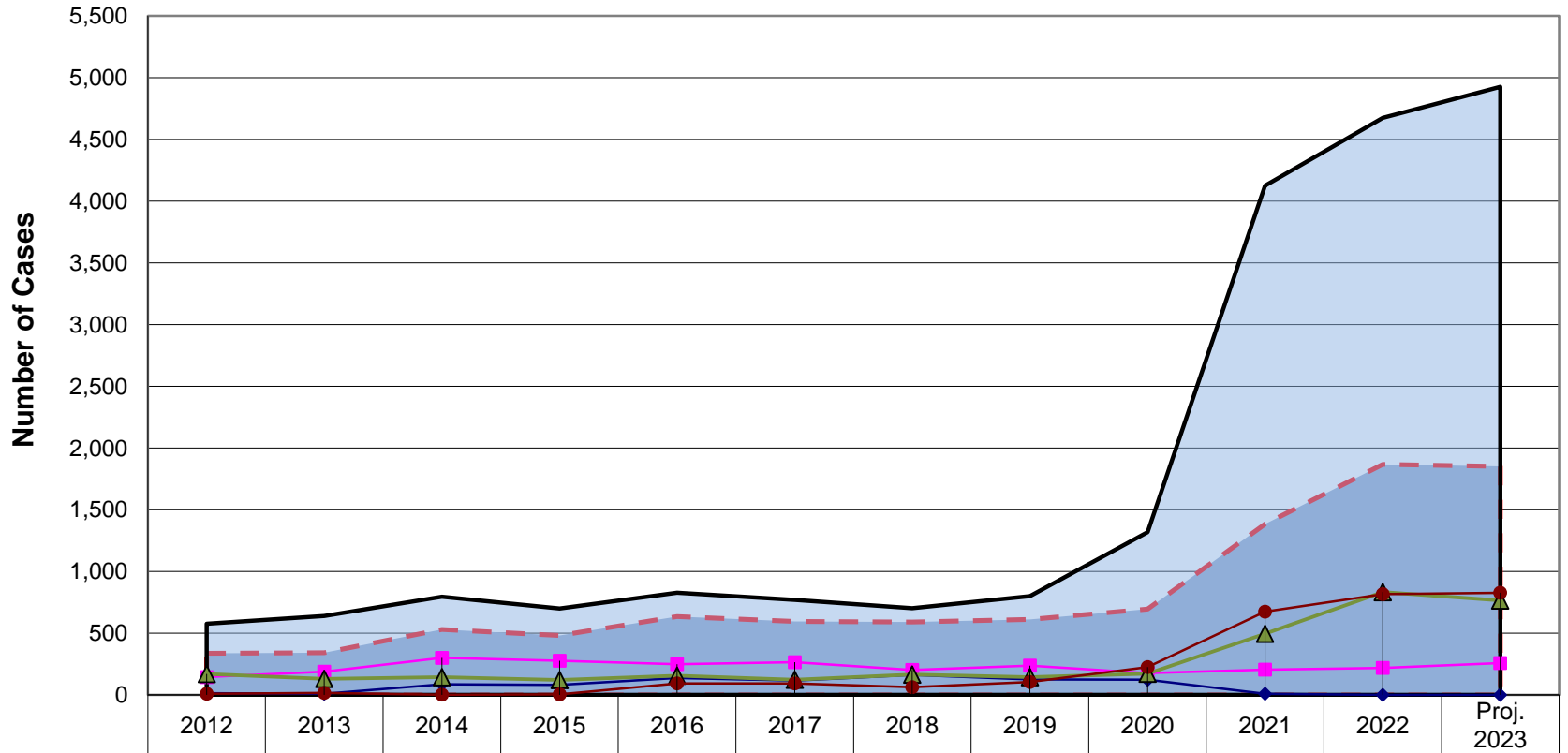
▬ Total Core
 Total Disposed
 ◆ Conciliated
 ■ Mediated to Agreement
 ▲ *Mediated w/o Agreement
 ● Facilitated/Arbitrated

*Includes Mediated to Partial Agreement

**Projection Calculated Using First through Third Quarter Reporting Data

Jackson Trend Report

Annual Comparison of Disposed Cases



	2012	2013	2014	2015	2016	2017	2018	2019	2020	2021	2022	Proj. 2023
Total Core	336	341	530	482	635	596	591	611	696	1,383	1,867	1,851
Total Disposed	576	639	794	699	828	770	703	799	1,318	4,126	4,673	4,925
Conciliated	13	8	86	80	138	116	162	125	124	10	0	0
Mediated to Agreement	145	189	300	276	248	265	201	237	176	204	218	259
*Mediated w/o Agreement	170	129	143	121	156	123	165	144	171	496	833	765
Facilitated/Arbitrated	8	15	1	5	93	92	63	105	225	673	816	827

▬ Total Core
 Total Disposed
 ◆ Conciliated
 ■ Mediated to Agreement
 ▲ *Mediated w/o Agreement
 ● Facilitated/Arbitrated

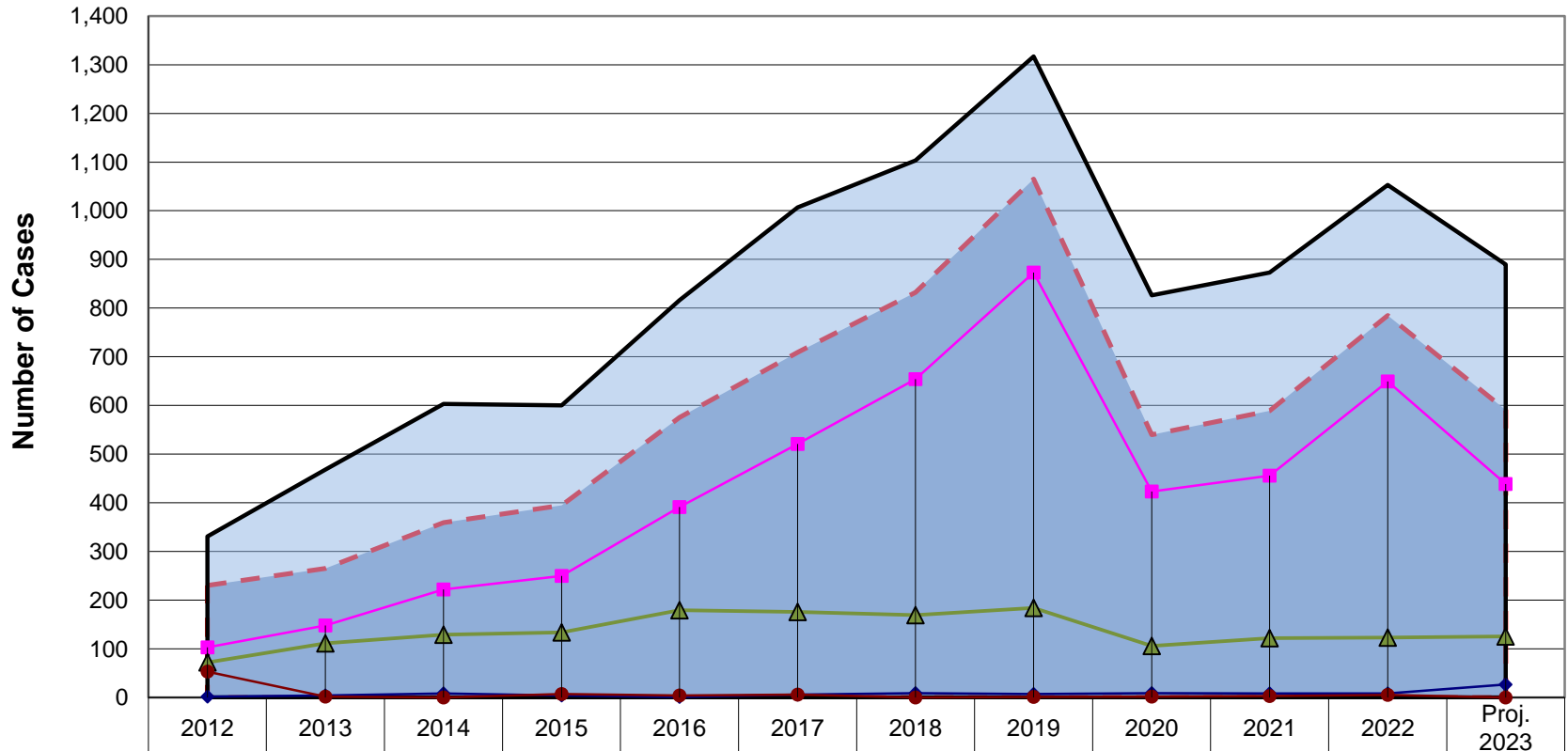
*Includes Mediated to Partial Agreement

**Projection Calculated Using First through Third Quarter Reporting Data

Date Prepared: October 20, 2023

Kent Trend Report

Annual Comparison of Disposed Cases



	2012	2013	2014	2015	2016	2017	2018	2019	2020	2021	2022	Proj. 2023
Total Core	230	265	359	395	575	709	832	1,065	540	589	785	591
Total Disposed	331	468	603	600	816	1,007	1,103	1,317	826	873	1,053	889
Conciliated	2	4	8	4	1	6	9	7	9	8	8	27
Mediated to Agreement	103	148	222	250	391	521	654	873	423	456	649	439
*Mediated w/o Agreement	72	111	129	134	179	176	169	184	106	122	123	125
Facilitated/Arbitrated	53	2	0	7	4	6	0	1	2	3	5	0

▬ Total Core
 Total Disposed
 ◆ Conciliated
 ■ Mediated to Agreement
 ▲ *Mediated w/o Agreement
 ● Facilitated/Arbitrated

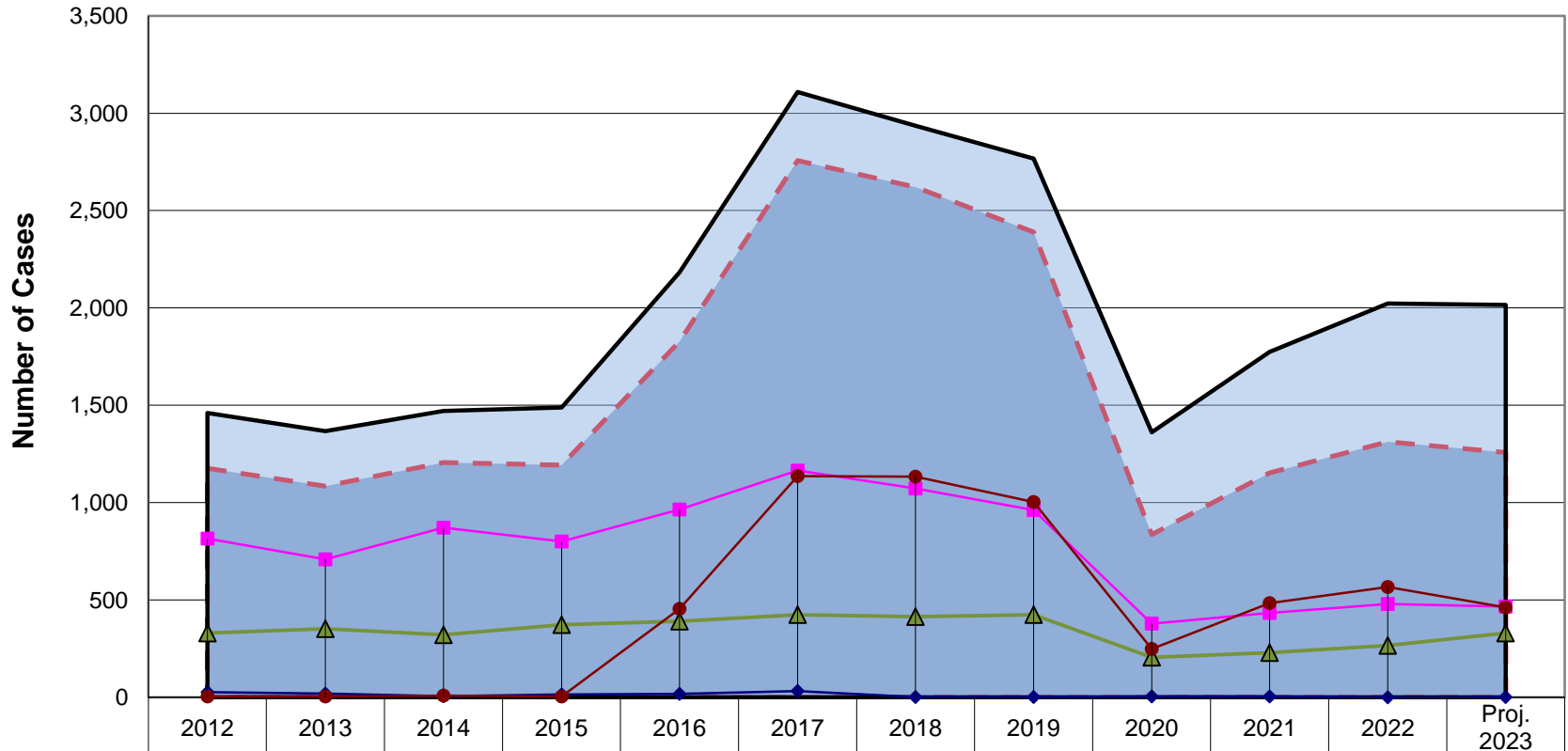
*Includes Mediated to Partial Agreement

**Projection Calculated Using First through Third Quarter Reporting Data

Date Prepared: October 20, 2023

Macomb Trend Report

Annual Comparison of Disposed Cases



	2012	2013	2014	2015	2016	2017	2018	2019	2020	2021	2022	Proj. 2023
Total Core	1,177	1,084	1,206	1,192	1,828	2,757	2,620	2,390	836	1,152	1,313	1,257
Total Disposed	1,461	1,367	1,471	1,489	2,183	3,109	2,936	2,767	1,361	1,774	2,022	2,015
Conciliated	27	19	6	14	18	32	1	1	4	5	0	1
Mediated to Agreement	815	709	871	800	965	1,165	1,072	962	378	434	480	465
*Mediated w/o Agreement	330	352	321	373	391	424	414	424	205	229	266	329
Facilitated/Arbitrated	5	4	8	5	454	1,136	1,133	1,003	249	484	567	461

▬ Total Core
 Total Disposed
 ◆ Conciliated
 ■ Mediated to Agreement
 ▲ *Mediated w/o Agreement
 ● Facilitated/Arbitrated

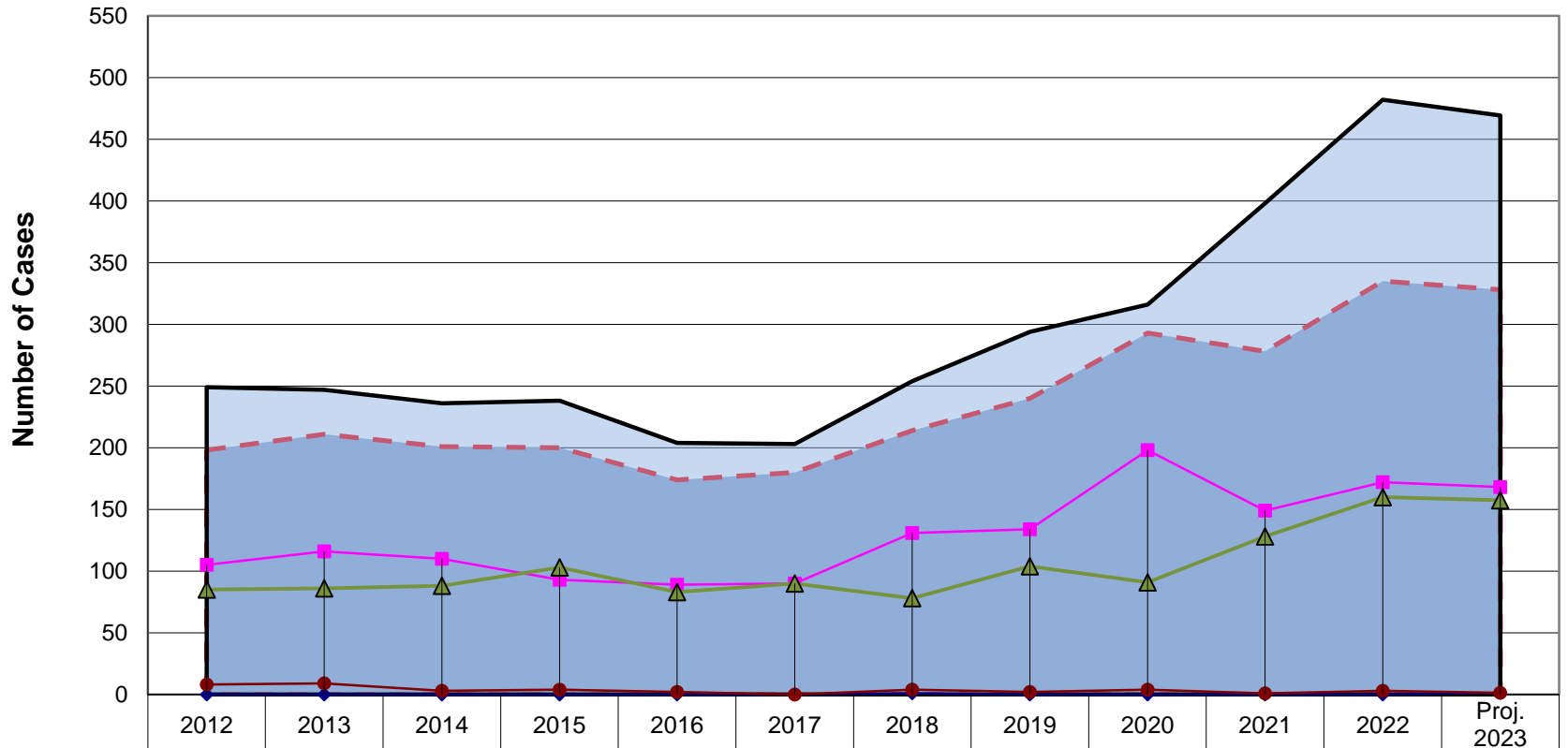
*Includes Mediated to Partial Agreement

**Projection Calculated Using First through Third Quarter Reporting Data

Date Prepared: October 20, 2023

Marquette Trend Report

Annual Comparison of Disposed Cases



	2012	2013	2014	2015	2016	2017	2018	2019	2020	2021	2022	Proj. 2023
Total Core	198	211	201	200	174	180	214	240	293	278	335	328
Total Disposed	249	247	236	238	204	203	254	294	316	398	482	469
Conciliated	0	0	0	0	0	0	1	0	0	0	0	1
Mediated to Agreement	105	116	110	93	89	90	131	134	198	149	172	168
*Mediated w/o Agreement	85	86	88	103	83	90	78	104	91	128	160	157
Facilitated/Arbitrated	8	9	3	4	2	0	4	2	4	1	3	1

- - - Total Core
 Total Disposed
 —◆— Conciliated
 —■— Mediated to Agreement
 —▲— *Mediated w/o Agreement
 —●— Facilitated/Arbitrated

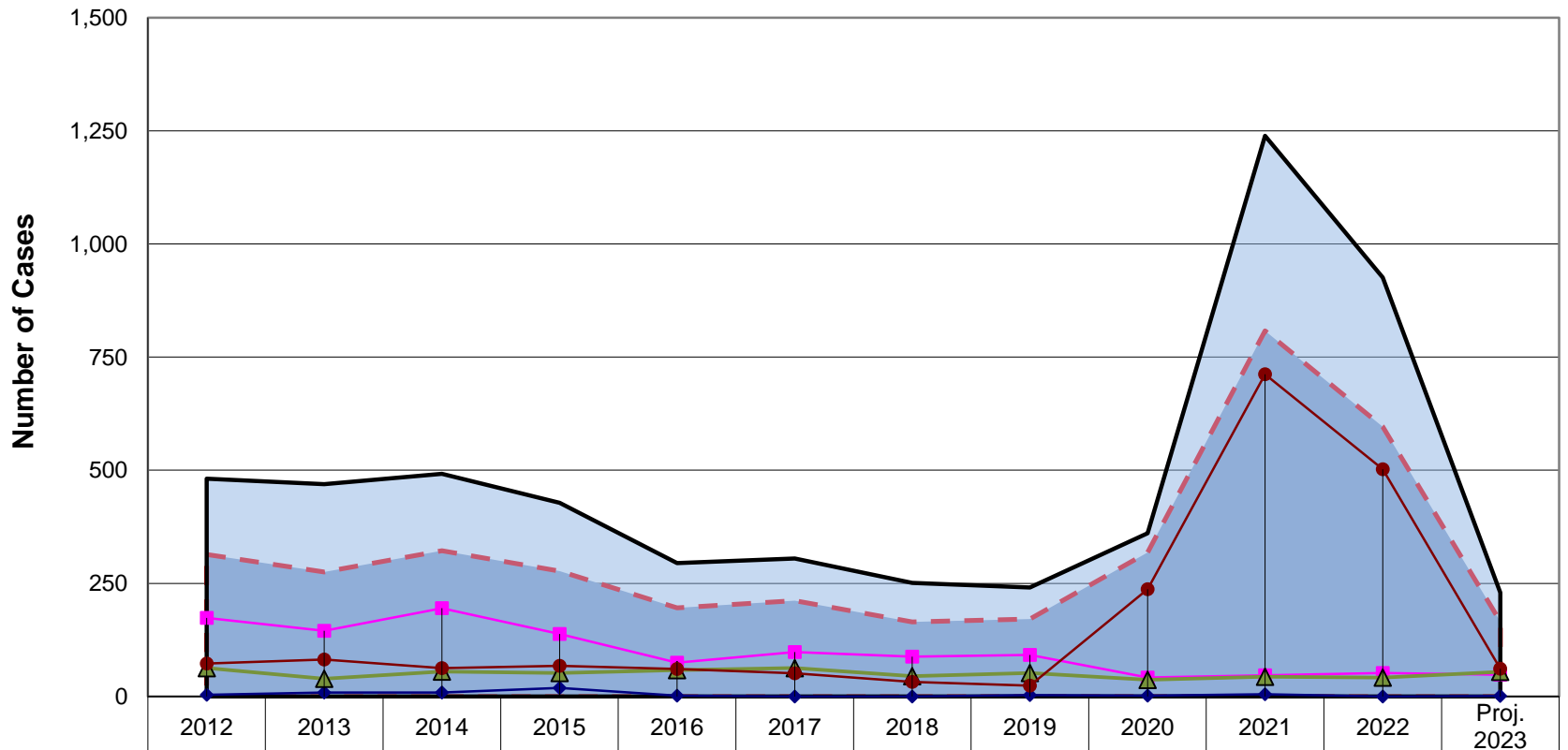
*Includes Mediated to Partial Agreement

**Projection Calculated Using First through Third Quarter Reporting Data

Date Prepared: October 20, 2023

Muskegon Trend Report

Annual Comparison of Disposed Cases



	2012	2013	2014	2015	2016	2017	2018	2019	2020	2021	2022	Proj. 2023
Total Core	314	275	322	277	196	212	165	171	318	808	596	165
Total Disposed	481	469	492	428	295	305	251	241	361	1,239	926	229
Conciliated	4	9	9	19	2	0	0	3	2	5	0	1
Mediated to Agreement	174	145	195	138	75	98	88	92	42	47	52	48
*Mediated w/o Agreement	63	39	55	52	58	63	45	52	37	44	42	55
Facilitated/Arbitrated	73	82	63	68	61	51	32	24	237	712	502	61

- - - Total Core
 Total Disposed
 ◆ Conciliated
 ■ Mediated to Agreement
 ▲ *Mediated w/o Agreement
 ● Facilitated/Arbitrated

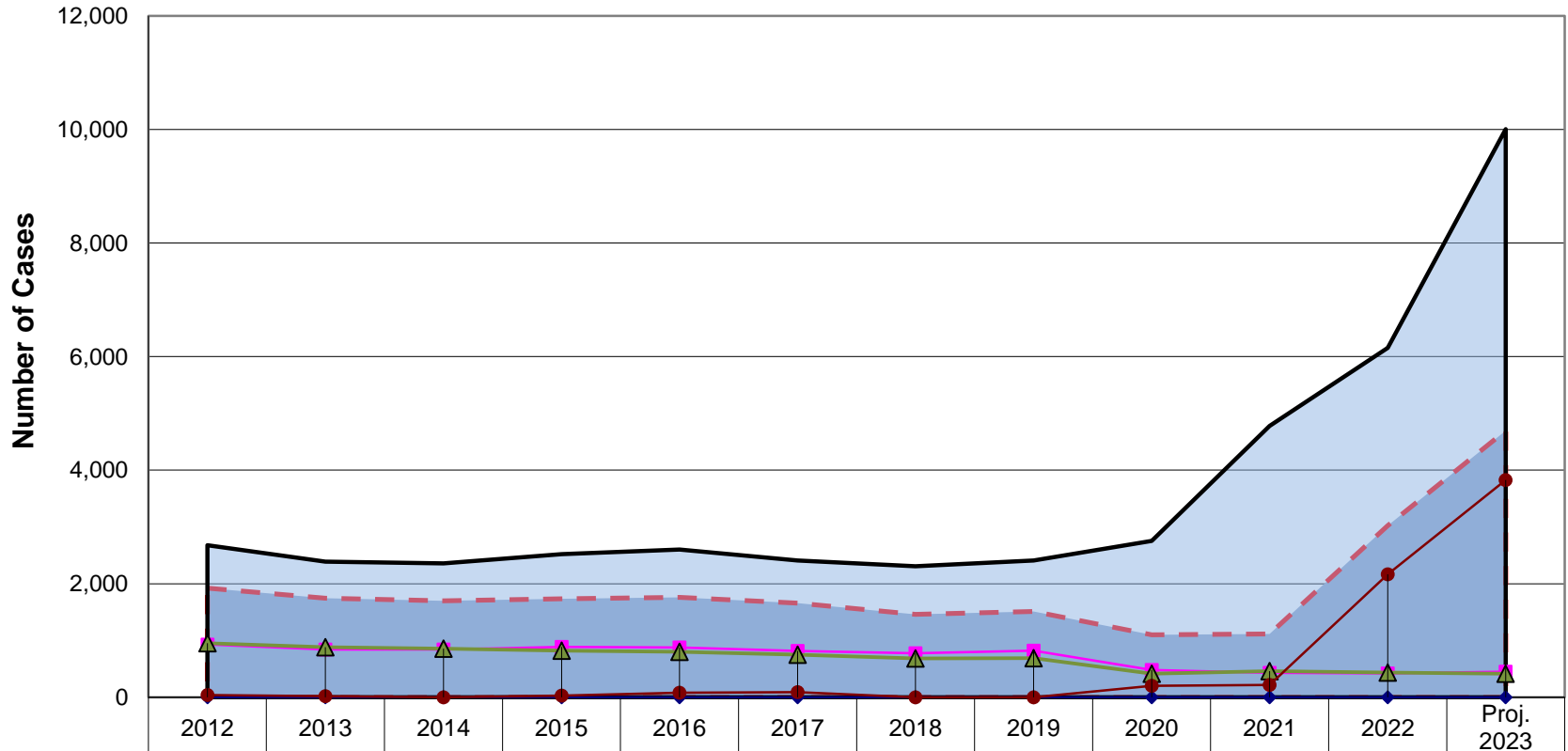
*Includes Mediated to Partial Agreement

**Projection Calculated Using First through Third Quarter Reporting Data

Date Prepared: October 20, 2023

Oakland Trend Report

Annual Comparison of Disposed Cases



	2012	2013	2014	2015	2016	2017	2018	2019	2020	2021	2022	Proj. 2023
Total Core	1,922	1,743	1,700	1,735	1,762	1,660	1,462	1,512	1,101	1,114	3,023	4,695
Total Disposed	2,677	2,391	2,357	2,519	2,601	2,409	2,310	2,408	2,756	4,778	6,154	10,005
Conciliated	0	0	0	0	1	0	0	0	1	0	0	0
Mediated to Agreement	930	840	841	886	877	818	778	823	480	433	421	451
*Mediated w/o Agreement	952	881	859	820	802	750	683	689	416	463	437	417
Facilitated/Arbitrated	40	22	0	29	82	92	1	0	204	218	2,165	3,827

▬ Total Core
 ▬ Total Disposed
 ◆ Conciliated
 ▬ Mediated to Agreement
 ▲ *Mediated w/o Agreement
 ● Facilitated/Arbitrated

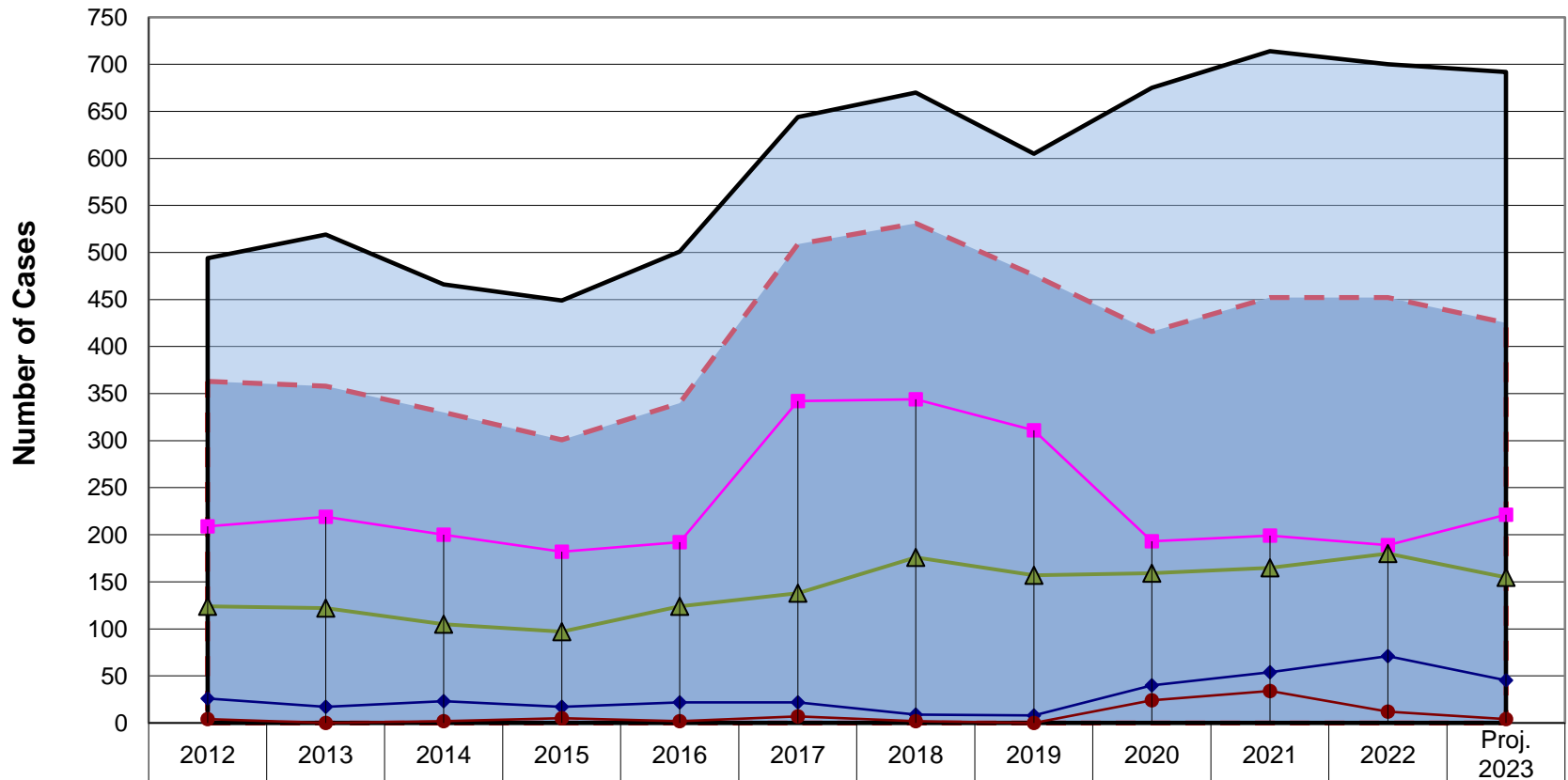
*Includes Mediated to Partial Agreement

**Projection Calculated Using First through Third Quarter Reporting Data

Date Prepared: October 20, 2023

Otsego Trend Report

Annual Comparison of Disposed Cases



	2012	2013	2014	2015	2016	2017	2018	2019	2020	2021	2022	Proj. 2023
Total Core	363	358	330	301	340	509	531	476	416	452	452	425
Total Disposed	494	519	466	449	501	644	670	605	675	714	700	692
Conciliated	26	17	23	17	22	22	9	8	40	54	71	45
Mediated to Agreement	209	219	200	182	192	342	344	311	193	199	189	221
*Mediated w/o Agreement	124	122	105	97	124	138	176	157	159	165	180	155
Facilitated/Arbitrated	4	0	2	5	2	7	2	0	24	34	12	4

- - - Total Core
 Total Disposed
 —◆— Conciliated
 —■— Mediated to Agreement
 —▲— *Mediated w/o Agreement
 —●— Facilitated/Arbitrated

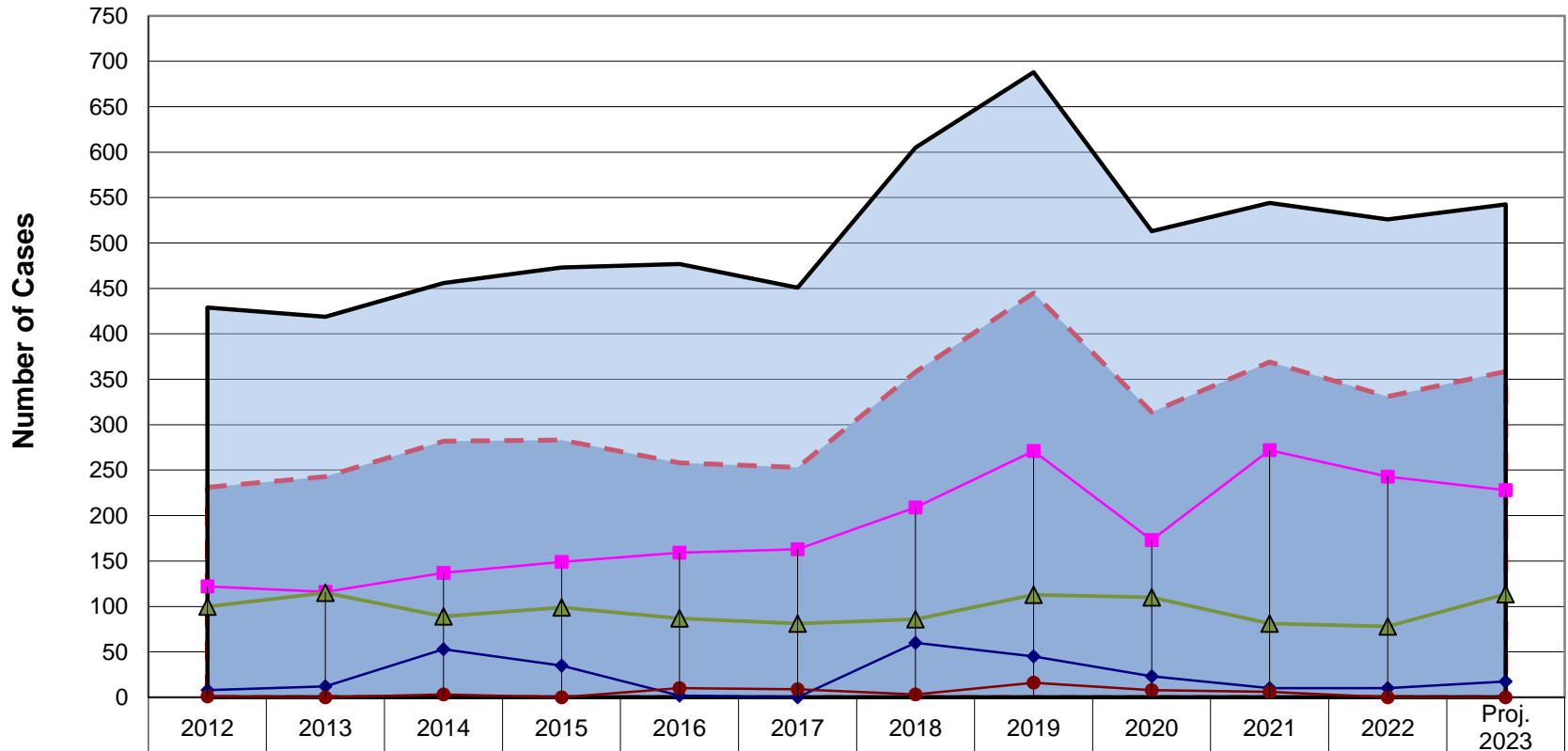
*Includes Mediated to Partial Agreement

**Projection Calculated Using First through Third Quarter Reporting Data

Date Prepared: October 20, 2023

Ottawa Trend Report

Annual Comparison of Disposed Cases



	2012	2013	2014	2015	2016	2017	2018	2019	2020	2021	2022	Proj. 2023
Total Core	231	243	282	283	258	253	358	445	314	369	331	359
Total Disposed	429	419	456	473	477	451	605	688	513	544	526	543
Conciliated	8	12	53	35	2	0	60	45	23	10	10	17
Mediated to Agreement	122	116	137	149	159	163	209	271	173	272	243	228
*Mediated w/o Agreement	100	115	89	99	87	81	86	113	110	81	78	113
Facilitated/Arbitrated	1	0	3	0	10	9	3	16	8	6	0	0

▬ Total Core
 Total Disposed
 ◆ Conciliated
 ■ Mediated to Agreement
 ▲ *Mediated w/o Agreement
 ● Facilitated/Arbitrated

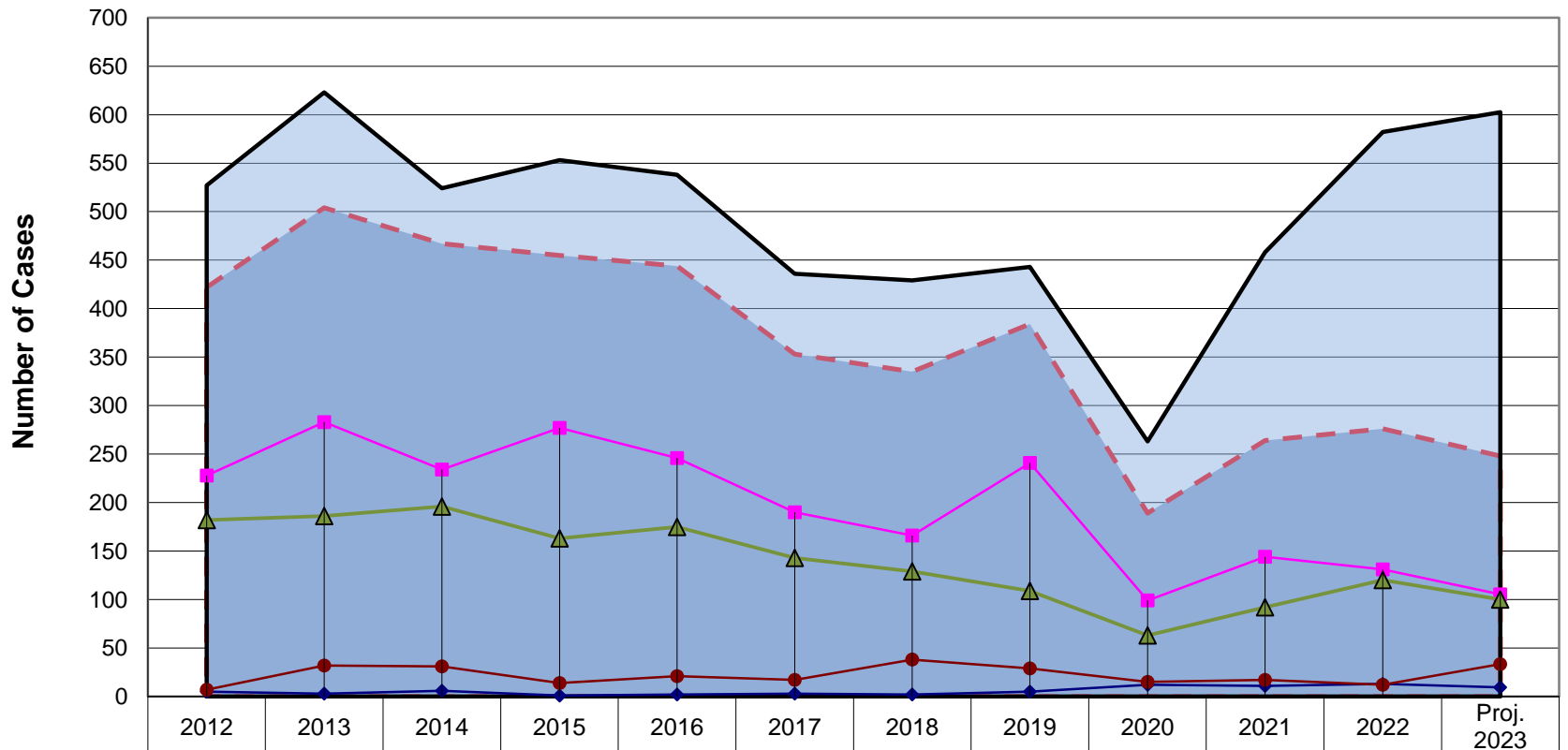
*Includes Mediated to Partial Agreement

**Projection Calculated Using First through Third Quarter Reporting Data

Date Prepared: October 20, 2023

Washtenaw Trend Report

Annual Comparison of Disposed Cases



	2012	2013	2014	2015	2016	2017	2018	2019	2020	2021	2022	Proj. 2023
Total Core	422	504	467	455	444	353	335	384	189	264	276	248
Total Disposed	527	623	524	553	538	436	429	443	263	458	582	603
Conciliated	5	3	6	1	2	3	2	5	12	11	13	9
Mediated to Agreement	228	283	234	277	246	190	166	241	99	144	131	105
*Mediated w/o Agreement	182	186	196	163	175	143	129	109	63	92	120	100
Facilitated/Arbitrated	7	32	31	14	21	17	38	29	15	17	12	33

- - - Total Core
 Total Disposed
 ◆ Conciliated
 ■ Mediated to Agreement
 ▲ *Mediated w/o Agreement
 ● Facilitated/Arbitrated

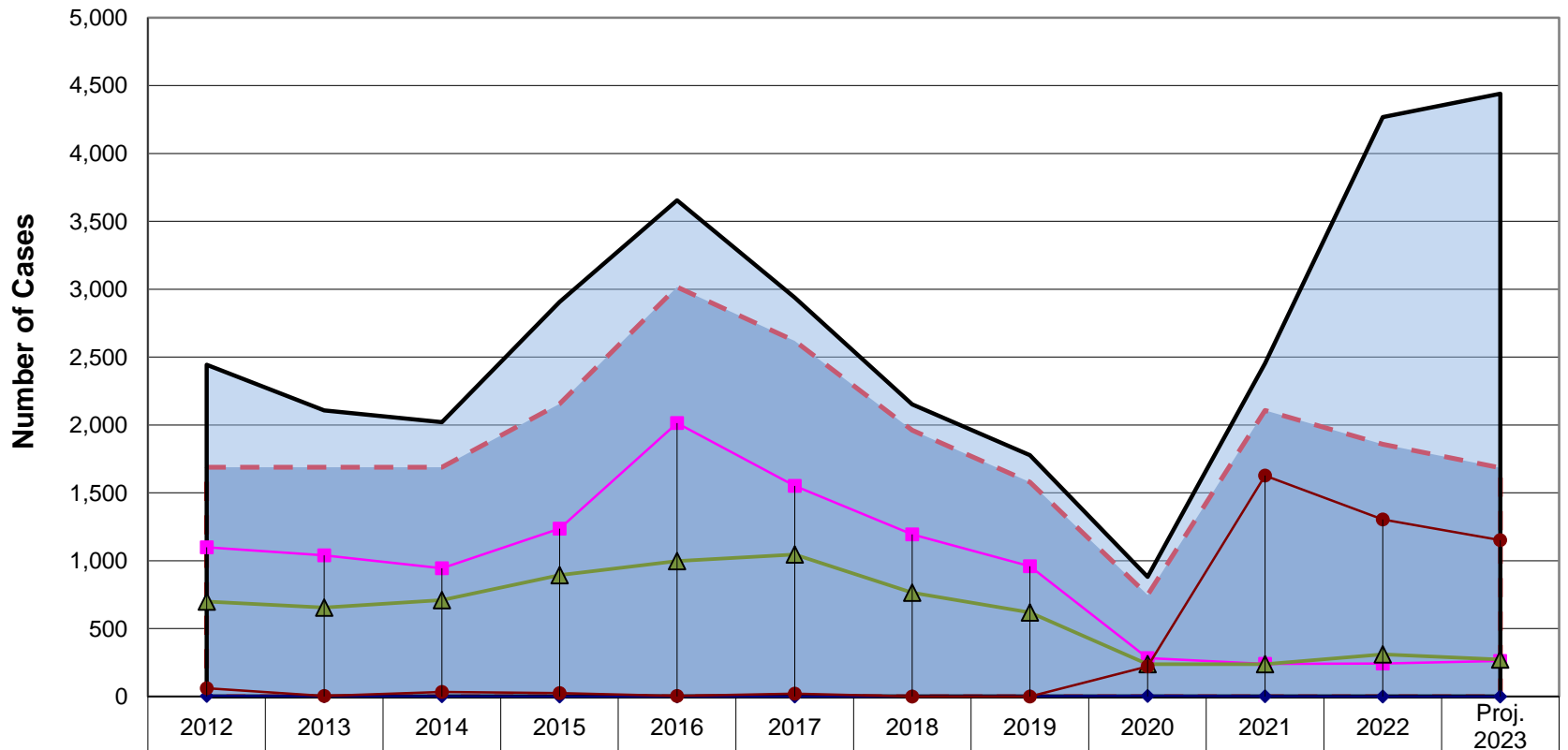
*Includes Mediated to Partial Agreement

**Projection Calculated Using First through Third Quarter Reporting Data

Date Prepared: October 20, 2023

Wayne Trend Report

Annual Comparison of Disposed Cases



	2012	2013	2014	2015	2016	2017	2018	2019	2020	2021	2022	Proj. 2023
Total Core	1,689	1,689	1,689	2,156	3,016	2,619	1,961	1,579	748	2,107	1,858	1,685
Total Disposed	2,443	2,107	2,020	2,906	3,654	2,939	2,151	1,777	881	2,454	4,267	4,440
Conciliated	5	1	1	0	0	0	0	1	5	2	0	0
Mediated to Agreement	1,098	1,039	945	1,236	2,014	1,552	1,195	959	283	240	242	261
*Mediated w/o Agreement	699	656	710	894	998	1,046	766	619	238	238	311	272
Facilitated/Arbitrated	61	4	33	26	4	21	0	0	222	1,627	1,305	1,152

▬ Total Core
 ▬ Total Disposed
 ◆ Conciliated
 ■ Mediated to Agreement
 ▲ *Mediated w/o Agreement
 ● Facilitated/Arbitrated

*Includes Mediated to Partial Agreement

**Projection Calculated Using First through Third Quarter Reporting Data

Date Prepared: October 20, 2023