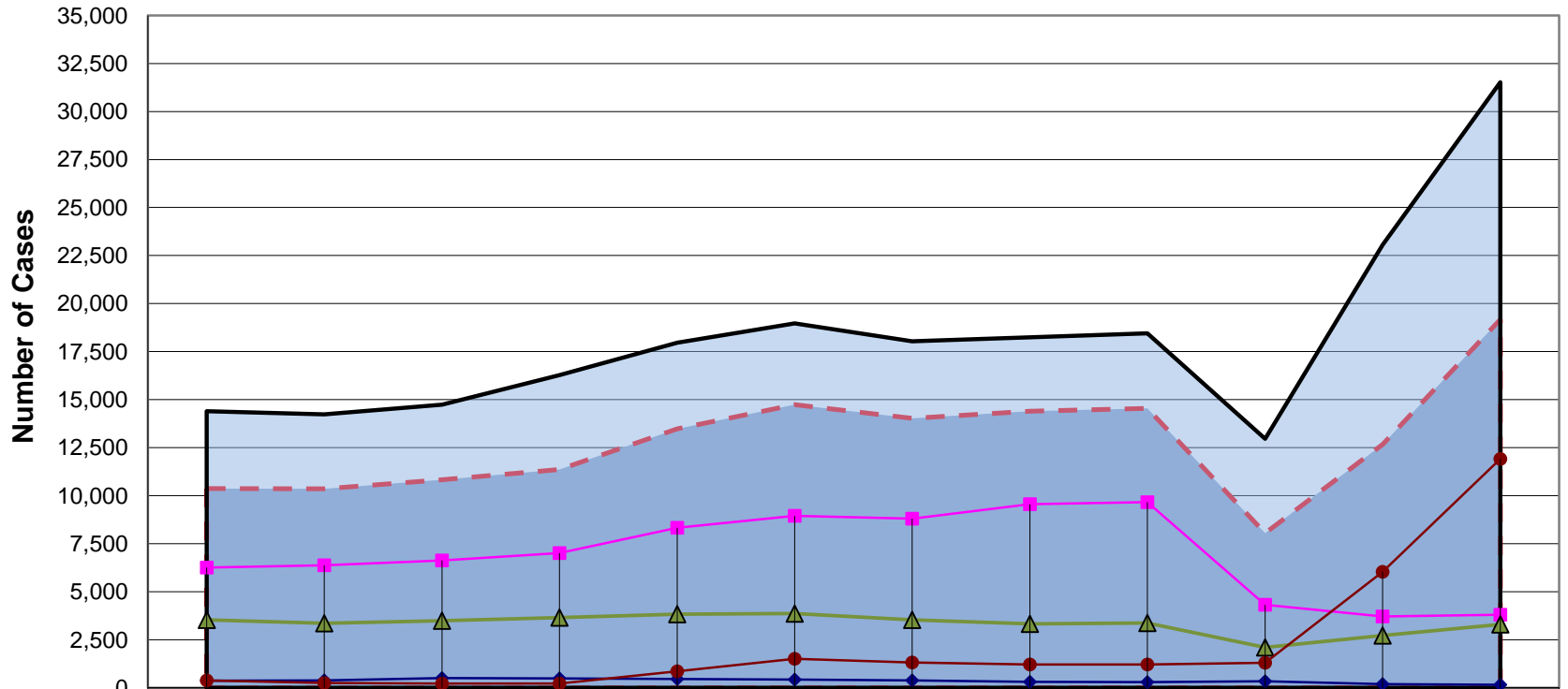


CDRP Statewide Trend Report

Annual Comparison of Disposed Cases



	2011	2012	2013	2014	2015	2016	2017	2018	2019	2020	2021	**Proj. 2022
Total Core	10,369	10,359	10,832	11,370	13,472	14,743	14,028	14,390	14,543	8,053	12,659	19,171
Total Disposed	14,399	14,239	14,735	16,274	17,956	18,968	18,036	18,243	18,449	12,955	23,054	31,523
Conciliated	367	390	505	485	454	423	377	302	297	336	195	157
Mediated to Agreement	6,264	6,369	6,623	7,010	8,330	8,950	8,807	9,558	9,663	4,319	3,713	3,801
*Mediated w/o Agreement	3,534	3,358	3,485	3,650	3,825	3,866	3,535	3,323	3,375	2,101	2,718	3,299
Facilitated/Arbitrated	378	253	219	225	863	1,504	1,309	1,207	1,208	1,297	6,033	11,913

- - - Total Core
 — Total Disposed
 —◆— Conciliated
 —■— Mediated to Agreement
 —▲— *Mediated w/o Agreement
 —●— Facilitated/Arbitrated

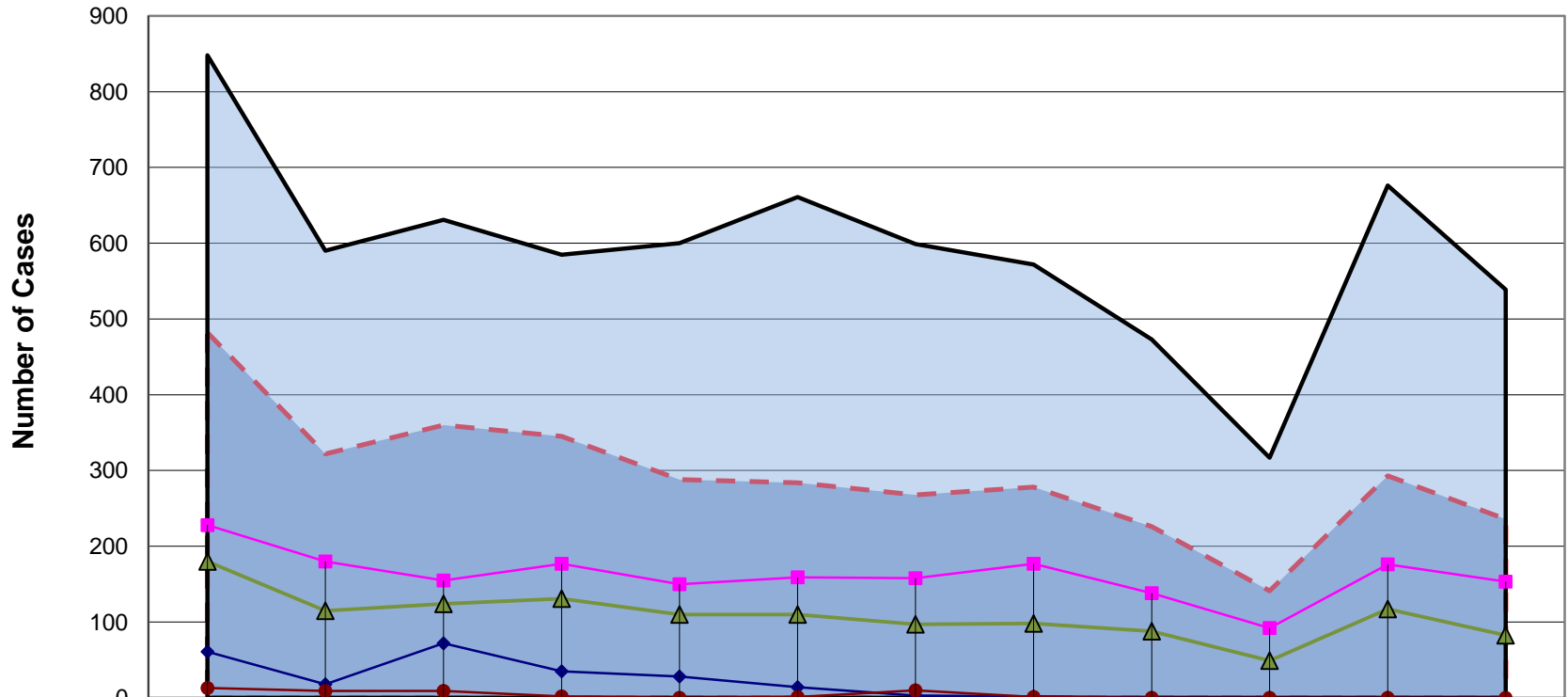
*Includes Mediated to Partial Agreement

**Projection Calculated Using First Through Third Quarter Reporting Data

Date Prepared: 10/26/2022

Berrien Trend Report

Annual Comparison of Disposed Cases



	2011	2012	2013	2014	2015	2016	2017	2018	2019	2020	2021	**Proj. 2022
Total Core	482	322	360	345	288	284	268	278	226	141	293	236
Total Disposed	848	590	631	585	600	661	599	572	473	317	676	539
Conciliated	61	18	72	35	28	14	3	2	0	0	0	0
Mediated to Agreement	228	180	155	177	150	159	158	177	138	92	176	153
*Mediated w/o Agreement	180	115	124	131	110	110	97	98	88	49	117	83
Facilitated/Arbitrated	13	9	9	2	0	1	10	1	0	0	0	0

- - - Total Core
 Total Disposed
 —◆— Conciliated
 —■— Mediated to Agreement
 —▲— *Mediated w/o Agreement
 —●— Facilitated/Arbitrated

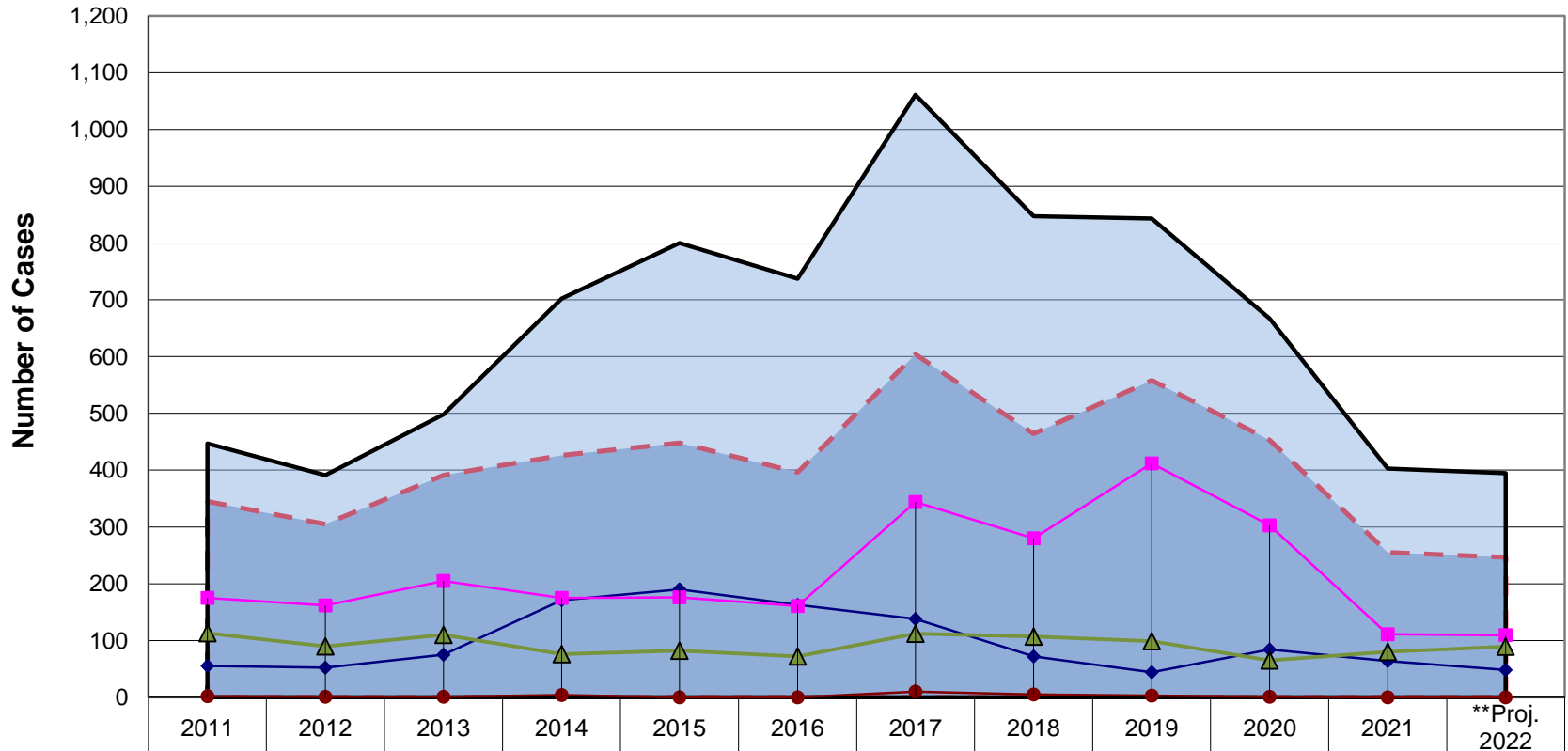
*Includes Mediated to Partial Agreement

**Projection Calculated Using First Through Third Quarter Reporting Data

Date Prepared: 10/26/2022

Charlevoix Trend Report

Annual Comparison of Disposed Cases



	2011	2012	2013	2014	2015	2016	2017	2018	2019	2020	2021	**Proj. 2022
Total Core	345	305	391	426	448	396	604	464	558	453	255	247
Total Disposed	447	391	498	702	800	737	1,061	847	843	667	403	395
Conciliated	55	52	75	171	190	163	138	72	44	84	64	48
Mediated to Agreement	175	162	205	175	176	161	344	280	412	303	111	109
*Mediated w/o Agreement	113	90	110	76	82	72	112	107	99	65	80	89
Facilitated/Arbitrated	2	1	1	4	0	0	10	5	3	1	0	0

- - - Total Core
 Total Disposed
 —◆— Conciliated
 —■— Mediated to Agreement
 —▲— *Mediated w/o Agreement
 —●— Facilitated/Arbitrated

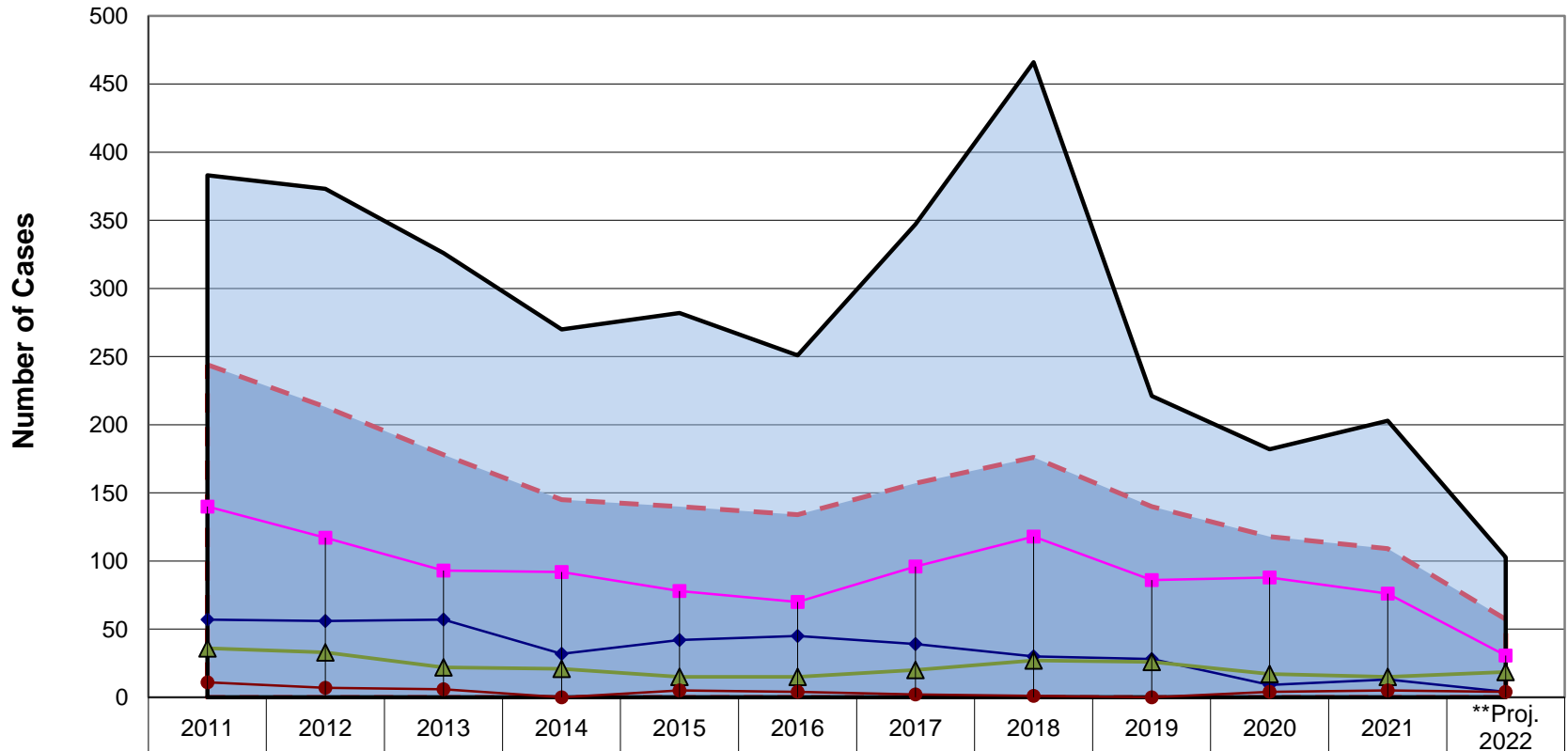
*Includes Mediated to Partial Agreement

**Projection Calculated Using First Through Third Quarter Reporting Data

Date Prepared: 10/26/2022

Chippewa Trend Report

Annual Comparison of Disposed Cases



	2011	2012	2013	2014	2015	2016	2017	2018	2019	2020	2021	**Proj. 2022
Total Core	244	213	178	145	140	134	157	176	140	118	109	57
Total Disposed	383	373	326	270	282	251	347	466	221	182	203	103
Conciliated	57	56	57	32	42	45	39	30	28	9	13	4
Mediated to Agreement	140	117	93	92	78	70	96	118	86	88	76	31
*Mediated w/o Agreement	36	33	22	21	15	15	20	27	26	17	15	19
Facilitated/Arbitrated	11	7	6	0	5	4	2	1	0	4	5	4

- - - Total Core
 Total Disposed
 —◆— Conciliated
 —■— Mediated to Agreement
 —▲— *Mediated w/o Agreement
 —●— Facilitated/Arbitrated

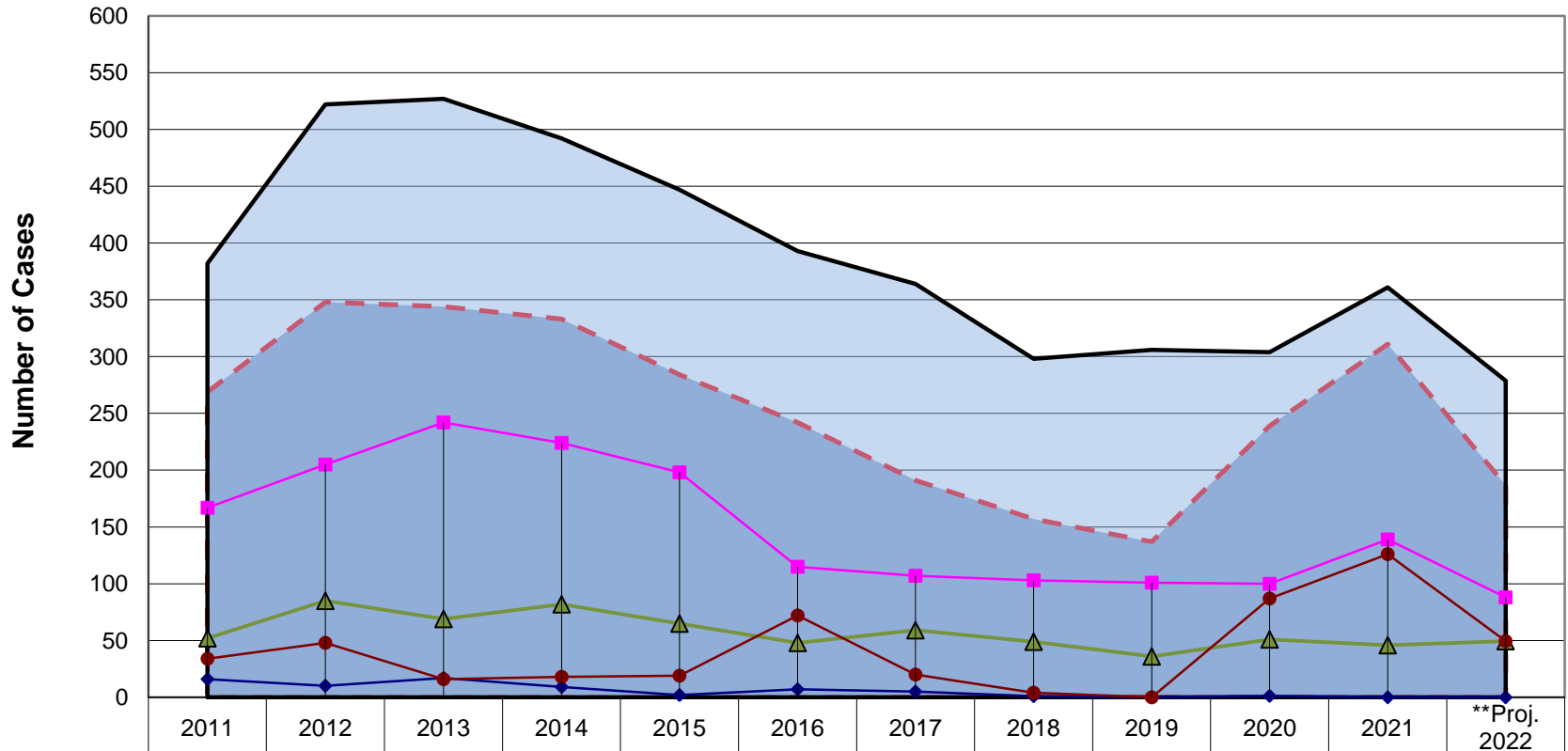
*Includes Mediated to Partial Agreement

**Projection Calculated Using First Through Third Quarter Reporting Data

Date Prepared: 10/26/2022

Delta Trend Report

Annual Comparison of Disposed Cases



	2011	2012	2013	2014	2015	2016	2017	2018	2019	2020	2021	**Proj. 2022
Total Core	269	348	344	333	284	242	191	157	137	239	311	187
Total Disposed	382	522	527	492	447	393	364	298	306	304	361	279
Conciliated	16	10	17	9	2	7	5	1	0	1	0	0
Mediated to Agreement	167	205	242	224	198	115	107	103	101	100	139	88
*Mediated w/o Agreement	52	85	69	82	65	48	59	49	36	51	46	49
Facilitated/Arbitrated	34	48	16	18	19	72	20	4	0	87	126	49

- - - Total Core
 Total Disposed
 ◆ Conciliated
 ■ Mediated to Agreement
 ▲ *Mediated w/o Agreement
 ● Facilitated/Arbitrated

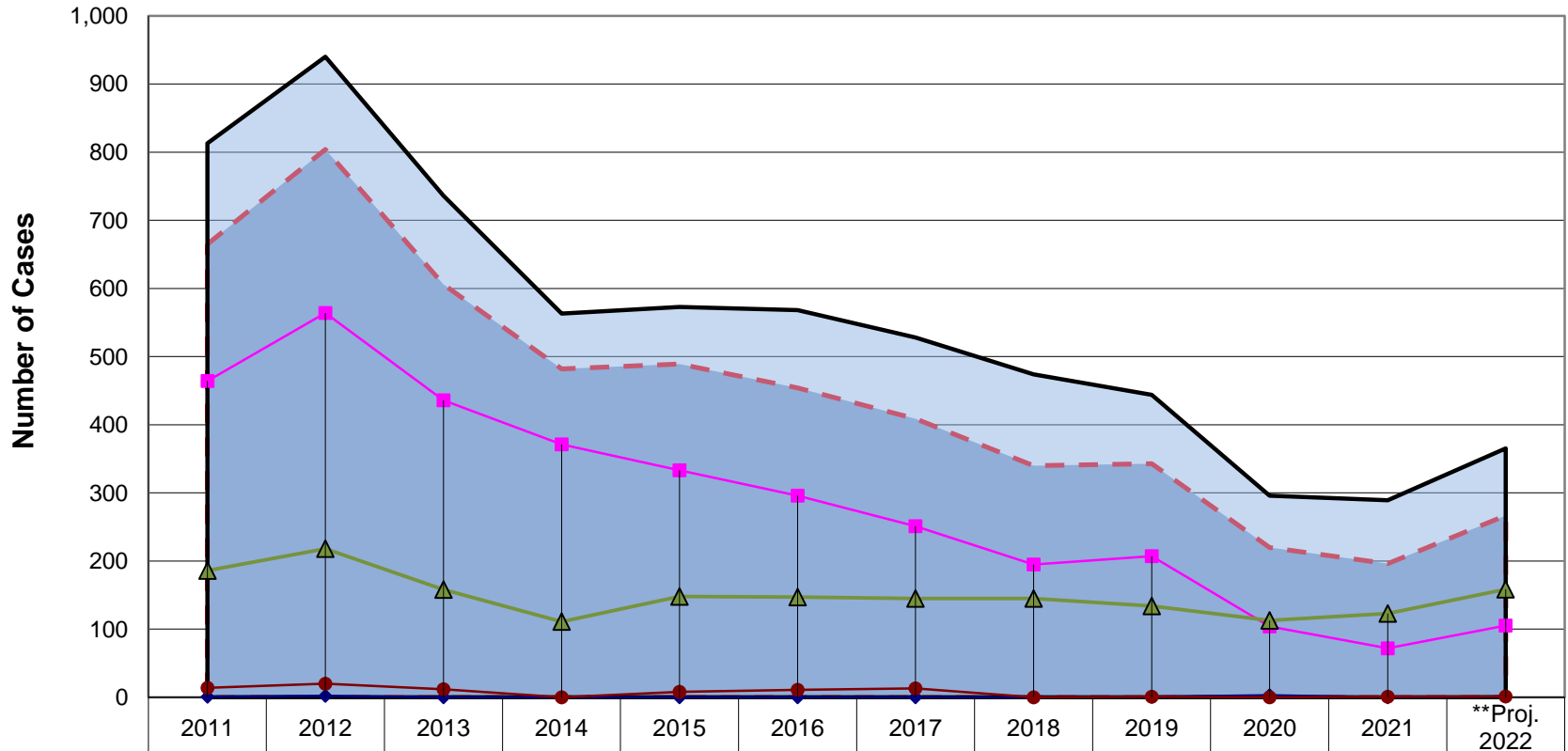
*Includes Mediated to Partial Agreement

**Projection Calculated Using First Through Third Quarter Reporting Data

Date Prepared: 10/26/2022

Genesee Trend Report

Annual Comparison of Disposed Cases



	2011	2012	2013	2014	2015	2016	2017	2018	2019	2020	2021	**Proj. 2022
Total Core	665	804	606	482	489	454	409	340	343	220	196	267
Total Disposed	813	940	736	563	573	568	528	474	444	296	289	365
Conciliated	1	2	0	0	0	0	0	0	1	3	0	1
Mediated to Agreement	464	564	436	371	333	296	251	195	207	104	72	105
*Mediated w/o Agreement	186	218	158	111	148	147	145	145	134	113	123	159
Facilitated/Arbitrated	14	20	12	0	8	11	13	0	1	0	1	1

- - - Total Core
 Total Disposed
 ◆ Conciliated
 ■ Mediated to Agreement
 ▲ *Mediated w/o Agreement
 ● Facilitated/Arbitrated

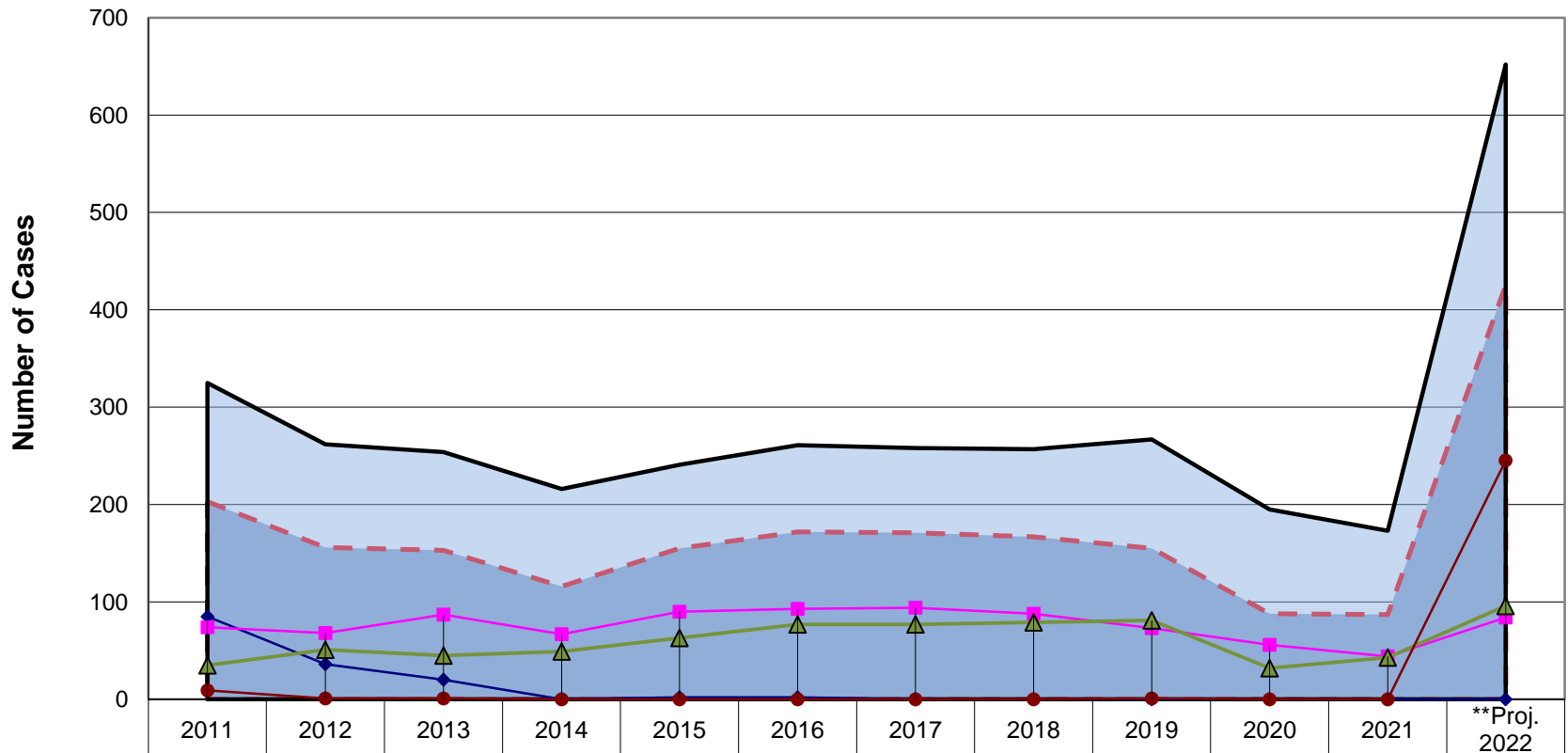
*Includes Mediated to Partial Agreement

**Projection Calculated Using First Through Third Quarter Reporting Data

Date Prepared: 10/26/2022

Grand Traverse Trend Report

Annual Comparison of Disposed Cases



	2011	2012	2013	2014	2015	2016	2017	2018	2019	2020	2021	**Proj. 2022
Total Core	203	156	153	116	155	172	171	167	155	88	87	425
Total Disposed	325	262	254	216	241	261	258	257	267	195	173	652
Conciliated	85	36	20	0	2	2	0	0	0	0	0	0
Mediated to Agreement	74	68	87	67	90	93	94	88	73	56	44	84
*Mediated w/o Agreement	35	51	45	49	63	77	77	79	81	32	43	96
Facilitated/Arbitrated	9	1	1	0	0	0	0	0	1	0	0	245

- - - Total Core
 Total Disposed
 —◆— Conciliated
 —■— Mediated to Agreement
 —▲— *Mediated w/o Agreement
 —●— Facilitated/Arbitrated

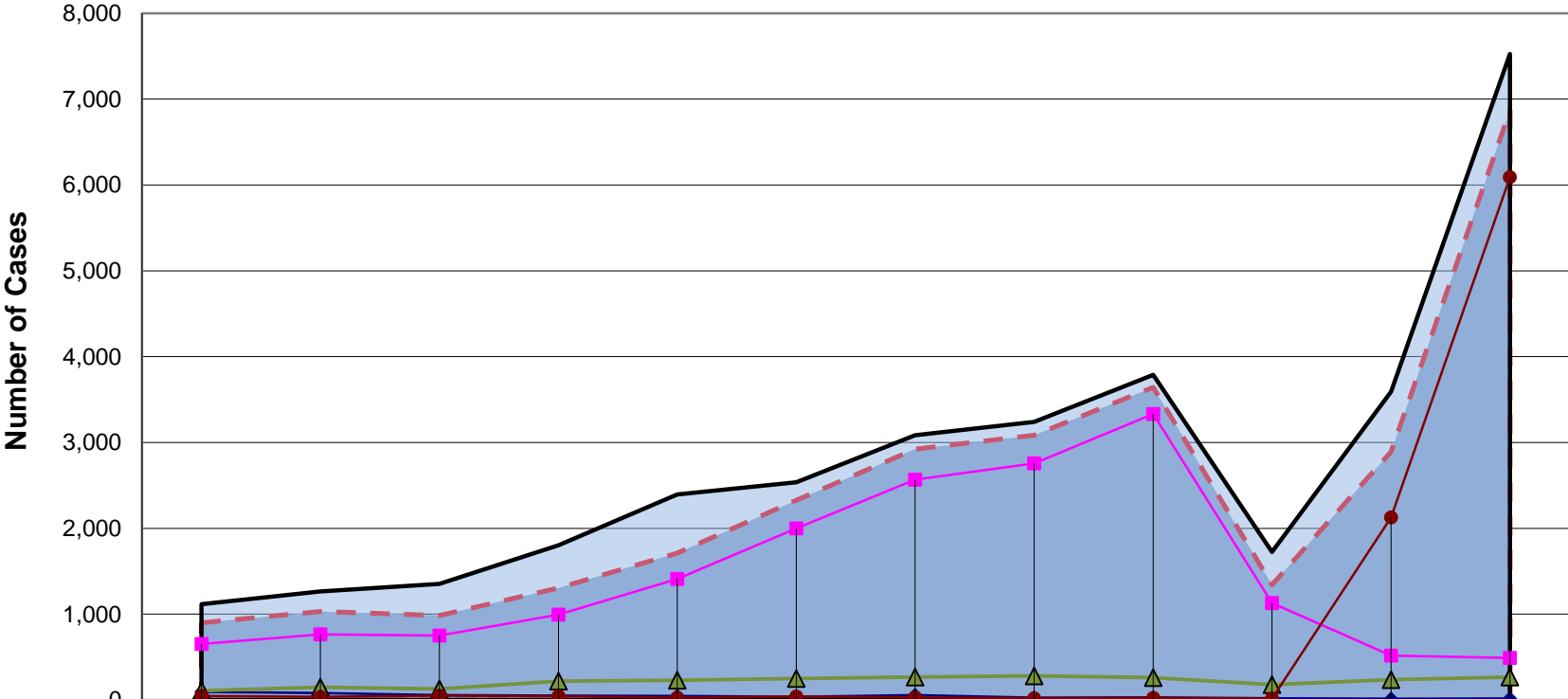
*Includes Mediated to Partial Agreement

**Projection Calculated Using First Through Third Quarter Reporting Data

Date Prepared: 10/26/2022

Ingham Trend Report

Annual Comparison of Disposed Cases



	2011	2012	2013	2014	2015	2016	2017	2018	2019	2020	2021	**Proj. 2022
Total Core	900	1,030	984	1,305	1,711	2,327	2,922	3,084	3,643	1,343	2,892	6,865
Total Disposed	1,115	1,265	1,354	1,804	2,395	2,535	3,084	3,241	3,788	1,724	3,591	7,527
Conciliated	94	81	57	51	46	37	57	27	29	19	13	17
Mediated to Agreement	651	764	750	993	1,409	2,000	2,566	2,755	3,332	1,131	517	489
*Mediated w/o Agreement	108	149	127	218	229	251	268	281	259	178	236	268
Facilitated/Arbitrated	47	36	50	43	27	39	31	21	23	15	2,126	6,091

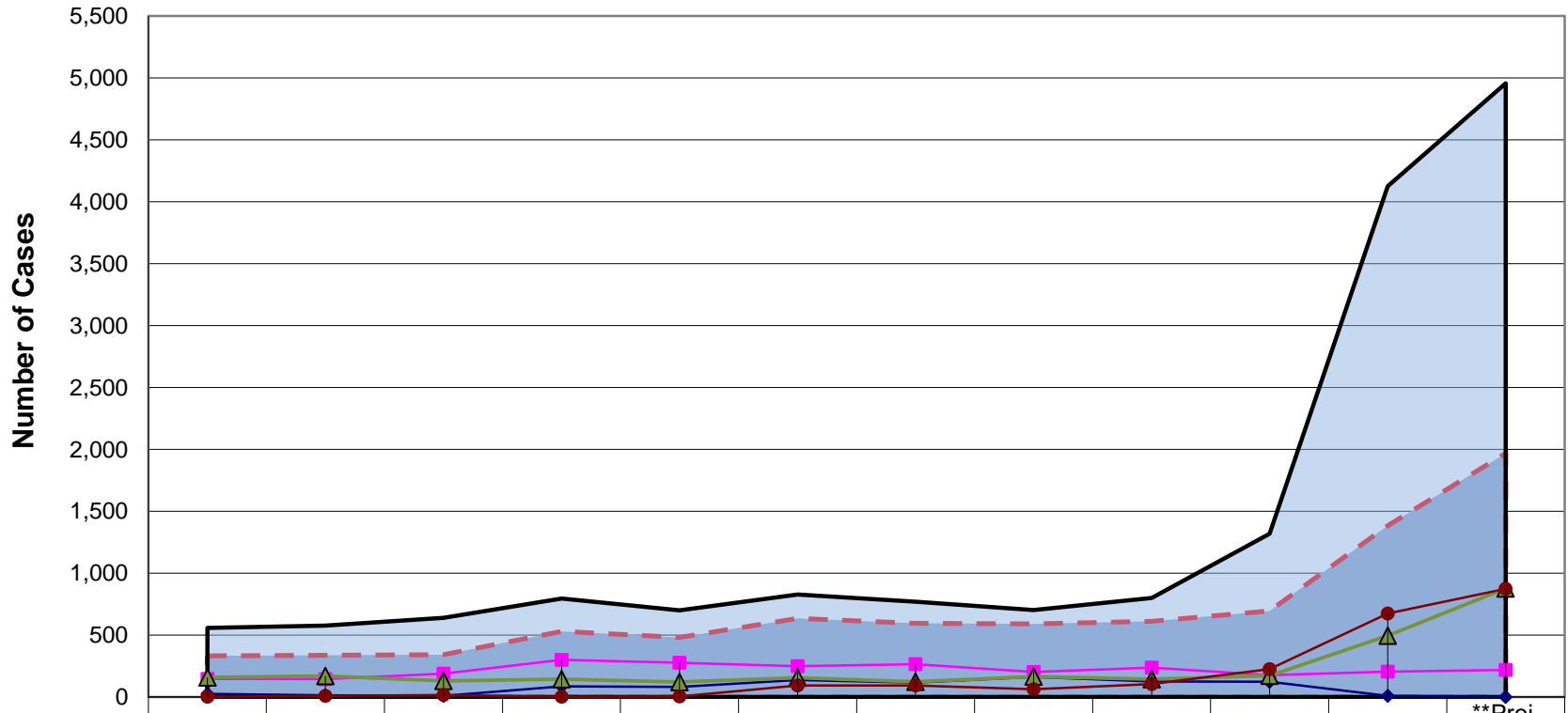
▬ Total Core
 ▬ Total Disposed
 ◆ Conciliated
 ▬ Mediated to Agreement
 ▬ *Mediated w/o Agreement
 ◆ Facilitated/Arbitrated

*Includes Mediated to Partial Agreement

**Projection Calculated Using First Through Third Quarter Reporting Data

Jackson Trend Report

Annual Comparison of Disposed Cases



	2011	2012	2013	2014	2015	2016	2017	2018	2019	2020	2021	**Proj. 2022
Total Core	332	336	341	530	482	635	596	591	611	696	1,383	1,968
Total Disposed	557	576	639	794	699	828	770	703	799	1,318	4,126	4,956
Conciliated	25	13	8	86	80	138	116	162	125	124	10	0
Mediated to Agreement	146	145	189	300	276	248	265	201	237	176	204	217
*Mediated w/o Agreement	159	170	129	143	121	156	123	165	144	171	496	877
Facilitated/Arbitrated	2	8	15	1	5	93	92	63	105	225	673	873

▬ Total Core
 ▬ Total Disposed
 ◆ Conciliated
 ■ Mediated to Agreement
 ▲ *Mediated w/o Agreement
 ● Facilitated/Arbitrated

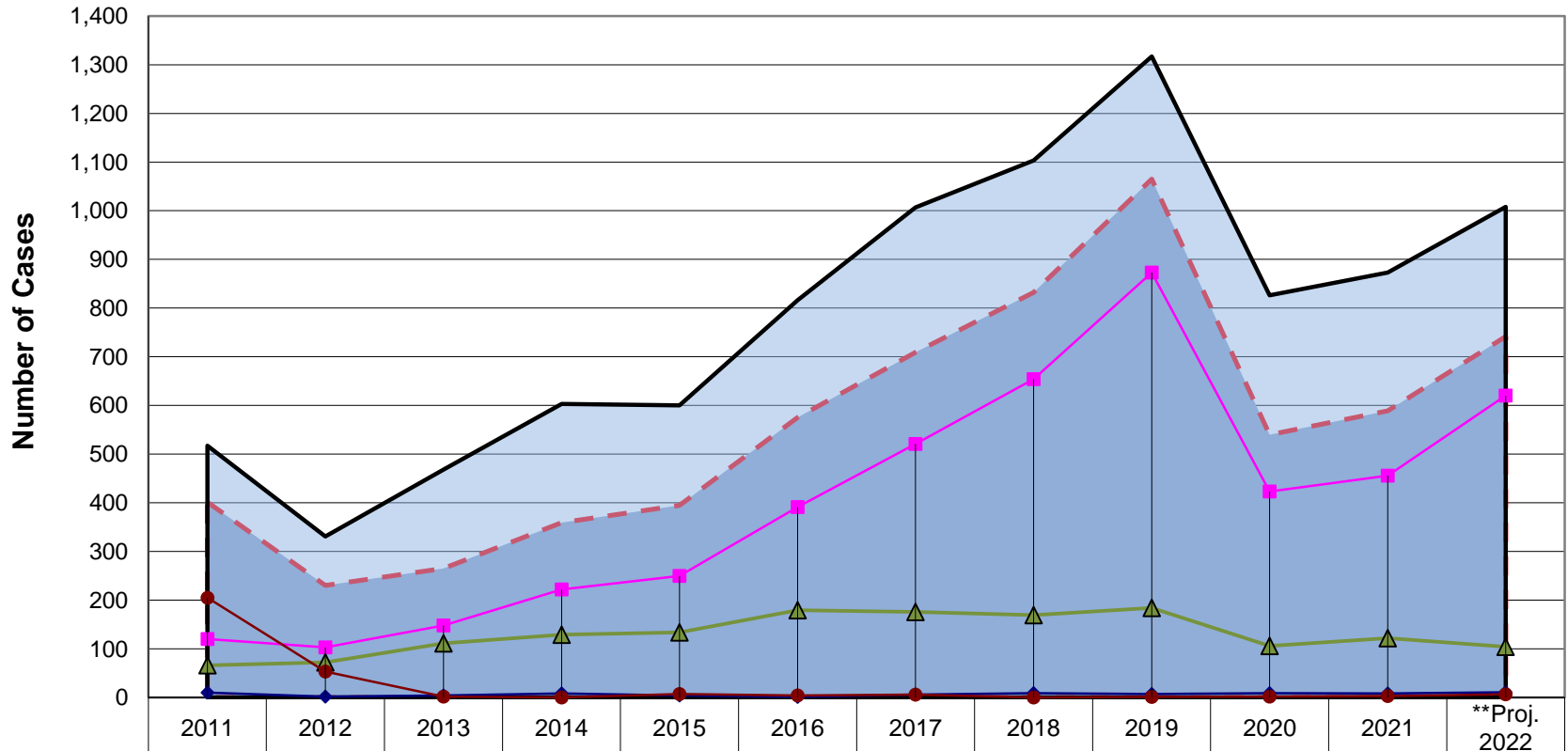
*Includes Mediated to Partial Agreement

**Projection Calculated Using First Through Third Quarter Reporting Data

Date Prepared: 10/26/2022

Kent Trend Report

Annual Comparison of Disposed Cases



	2011	2012	2013	2014	2015	2016	2017	2018	2019	2020	2021	**Proj. 2022
Total Core	401	230	265	359	395	575	709	832	1,065	540	589	741
Total Disposed	517	331	468	603	600	816	1,007	1,103	1,317	826	873	1,008
Conciliated	10	2	4	8	4	1	6	9	7	9	8	11
Mediated to Agreement	120	103	148	222	250	391	521	654	873	423	456	620
*Mediated w/o Agreement	66	72	111	129	134	179	176	169	184	106	122	104
Facilitated/Arbitrated	205	53	2	0	7	4	6	0	1	2	3	7

- - - Total Core
 Total Disposed
 —◆— Conciliated
 —■— Mediated to Agreement
 —▲— *Mediated w/o Agreement
 —●— Facilitated/Arbitrated

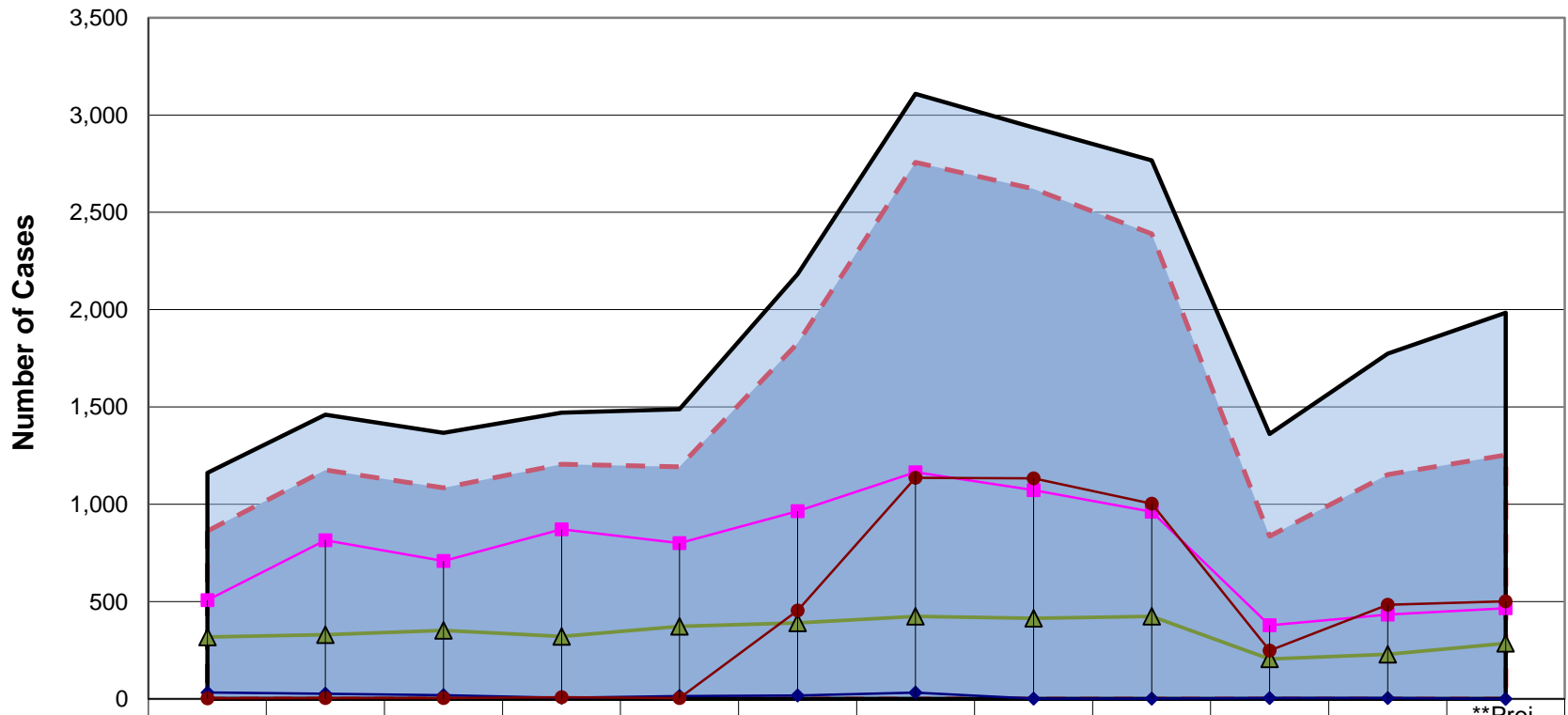
*Includes Mediated to Partial Agreement

**Projection Calculated Using First Through Third Quarter Reporting Data

Date Prepared: 10/26/2022

Macomb Trend Report

Annual Comparison of Disposed Cases



	2011	2012	2013	2014	2015	2016	2017	2018	2019	2020	2021	**Proj. 2022
Total Core	862	1,177	1,084	1,206	1,192	1,828	2,757	2,620	2,390	836	1,152	1,253
Total Disposed	1,162	1,461	1,367	1,471	1,489	2,183	3,109	2,936	2,767	1,361	1,774	1,984
Conciliated	33	27	19	6	14	18	32	1	1	4	5	0
Mediated to Agreement	508	815	709	871	800	965	1,165	1,072	962	378	434	467
*Mediated w/o Agreement	318	330	352	321	373	391	424	414	424	205	229	285
Facilitated/Arbitrated	3	5	4	8	5	454	1,136	1,133	1,003	249	484	501

▬ Total Core
 Total Disposed
 ◆ Conciliated
 ▬ Mediated to Agreement
 ▴ *Mediated w/o Agreement
 ● Facilitated/Arbitrated

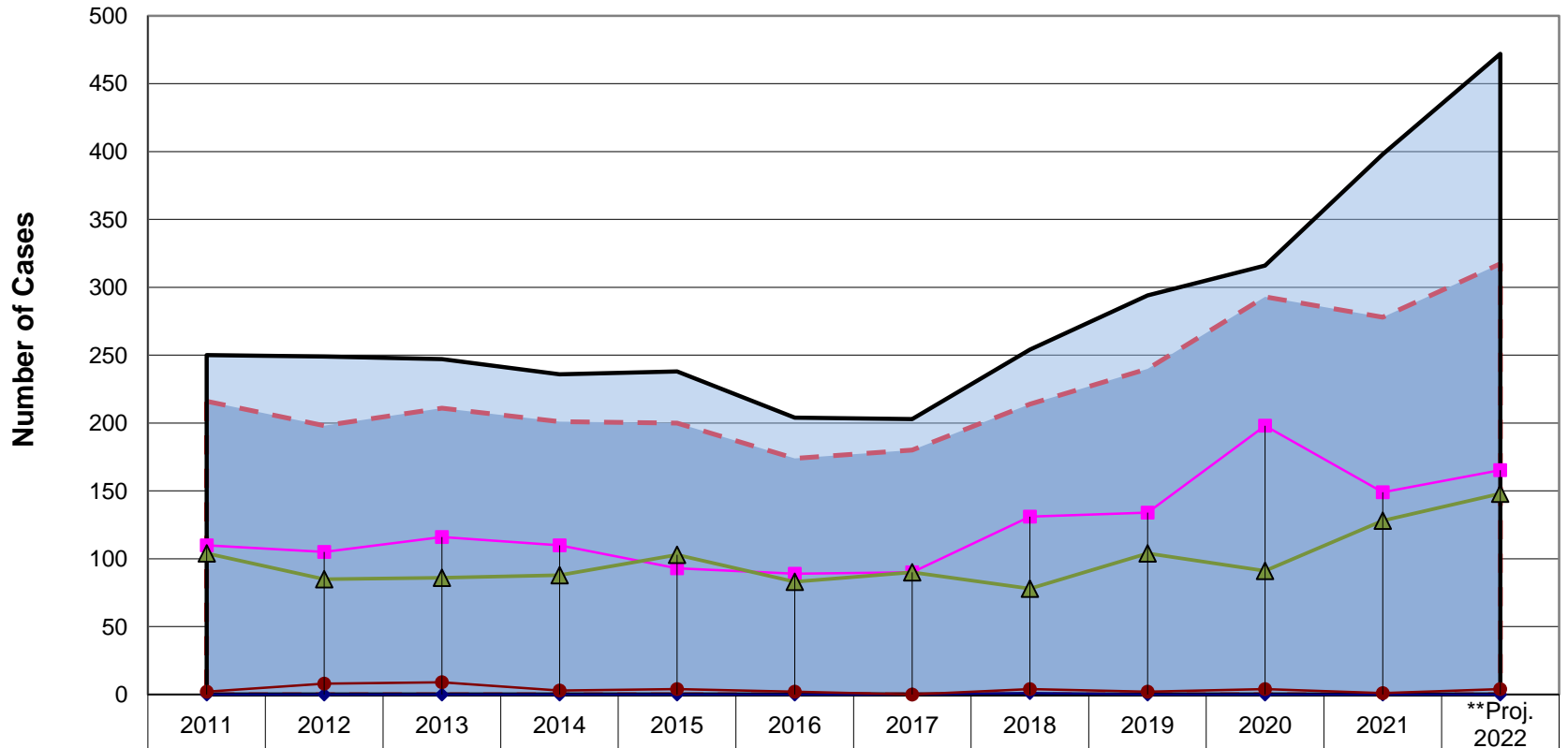
*Includes Mediated to Partial Agreement

**Projection Calculated Using First Through Third Quarter Reporting Data

Date Prepared: 10/26/2022

Marquette Trend Report

Annual Comparison of Disposed Cases



	2011	2012	2013	2014	2015	2016	2017	2018	2019	2020	2021	**Proj. 2022
Total Core	216	198	211	201	200	174	180	214	240	293	278	317
Total Disposed	250	249	247	236	238	204	203	254	294	316	398	472
Conciliated	0	0	0	0	0	0	0	1	0	0	0	0
Mediated to Agreement	110	105	116	110	93	89	90	131	134	198	149	165
*Mediated w/o Agreement	104	85	86	88	103	83	90	78	104	91	128	148
Facilitated/Arbitrated	2	8	9	3	4	2	0	4	2	4	1	4

▬ Total Core
 Total Disposed
 ◆ Conciliated
 ▬ Mediated to Agreement
 ▲ *Mediated w/o Agreement
 ● Facilitated/Arbitrated

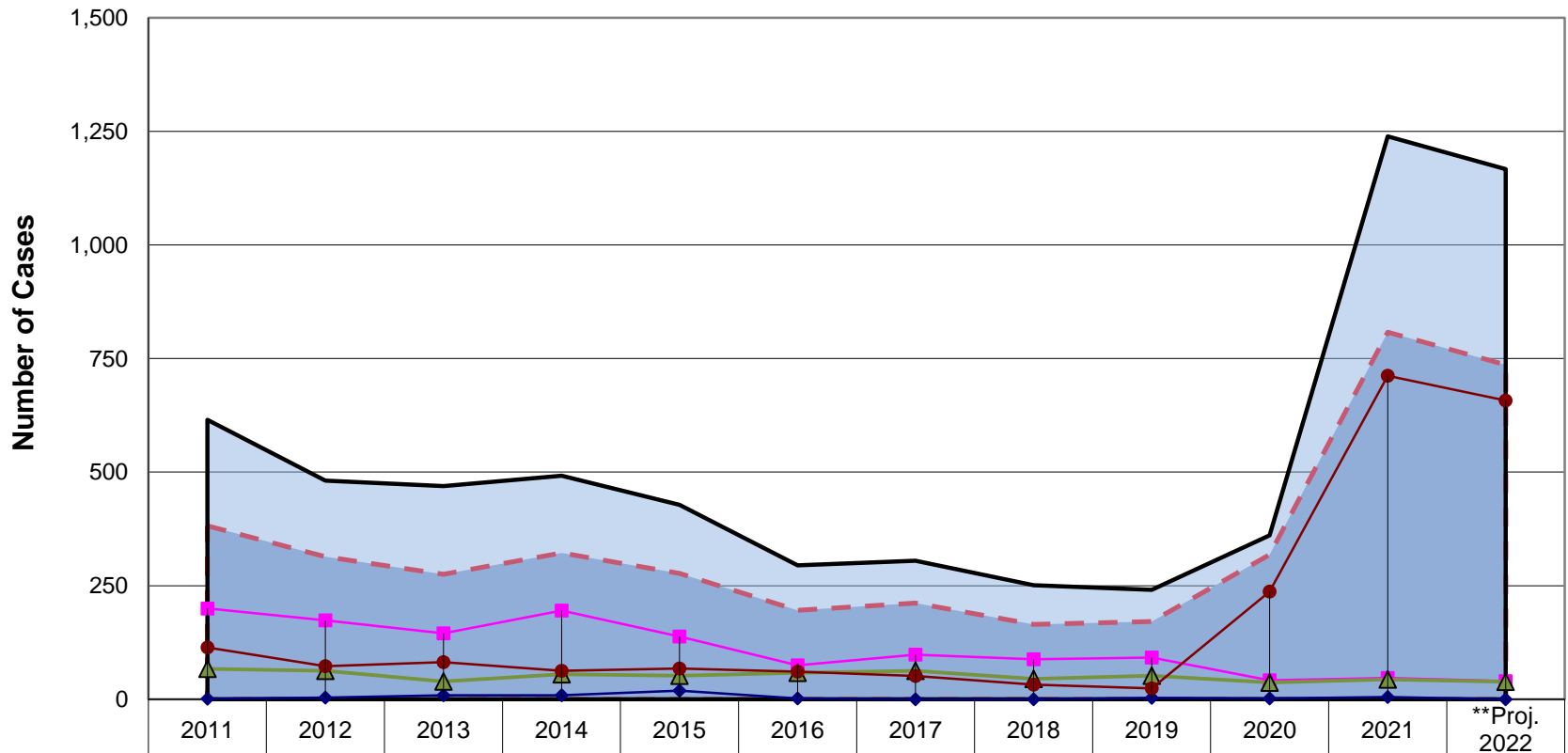
*Includes Mediated to Partial Agreement

**Projection Calculated Using First Through Third Quarter Reporting Data

Date Prepared: 10/26/2022

Muskegon Trend Report

Annual Comparison of Disposed Cases



	2011	2012	2013	2014	2015	2016	2017	2018	2019	2020	2021	**Proj. 2022
Total Core	382	314	275	322	277	196	212	165	171	318	808	736
Total Disposed	615	481	469	492	428	295	305	251	241	361	1,239	1,167
Conciliated	1	4	9	9	19	2	0	0	3	2	5	0
Mediated to Agreement	200	174	145	195	138	75	98	88	92	42	47	40
*Mediated w/o Agreement	67	63	39	55	52	58	63	45	52	37	44	39
Facilitated/Arbitrated	114	73	82	63	68	61	51	32	24	237	712	657

▬ Total Core
 Total Disposed
 ◆ Conciliated
 ■ Mediated to Agreement
 ▲ *Mediated w/o Agreement
 ● Facilitated/Arbitrated

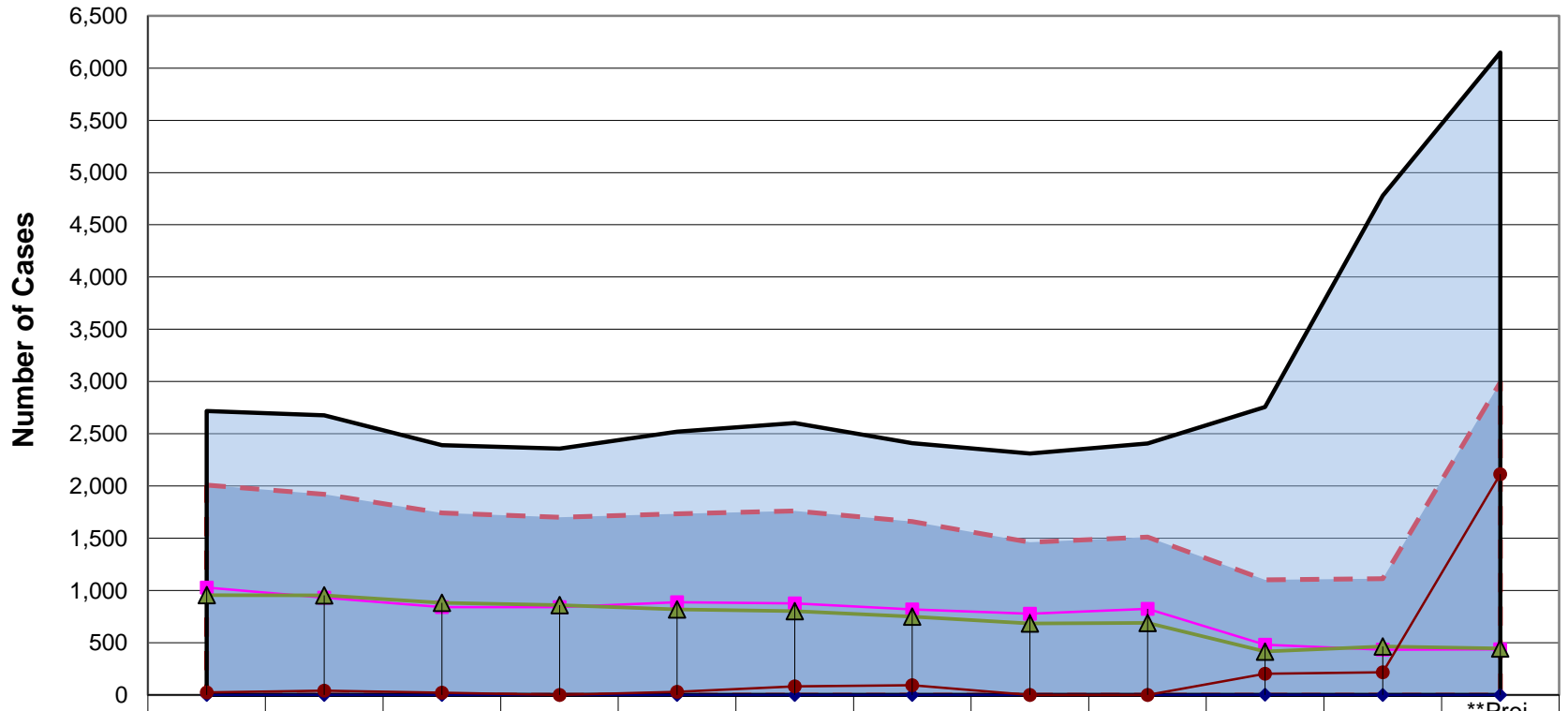
*Includes Mediated to Partial Agreement

**Projection Calculated Using First Through Third Quarter Reporting Data

Date Prepared: 10/26/2022

Oakland Trend Report

Annual Comparison of Disposed Cases



	2011	2012	2013	2014	2015	2016	2017	2018	2019	2020	2021	**Proj. 2022
Total Core	2,008	1,922	1,743	1,700	1,735	1,762	1,660	1,462	1,512	1,101	1,114	2,993
Total Disposed	2,718	2,677	2,391	2,357	2,519	2,601	2,409	2,310	2,408	2,756	4,778	6,149
Conciliated	0	0	0	0	0	1	0	0	0	1	0	0
Mediated to Agreement	1,028	930	840	841	886	877	818	778	823	480	433	436
*Mediated w/o Agreement	955	952	881	859	820	802	750	683	689	416	463	444
Facilitated/Arbitrated	25	40	22	0	29	82	92	1	0	204	218	2,113

▬ Total Core
 Total Disposed
 ◆ Conciliated
 ■ Mediated to Agreement
 ▲ *Mediated w/o Agreement
 ● Facilitated/Arbitrated

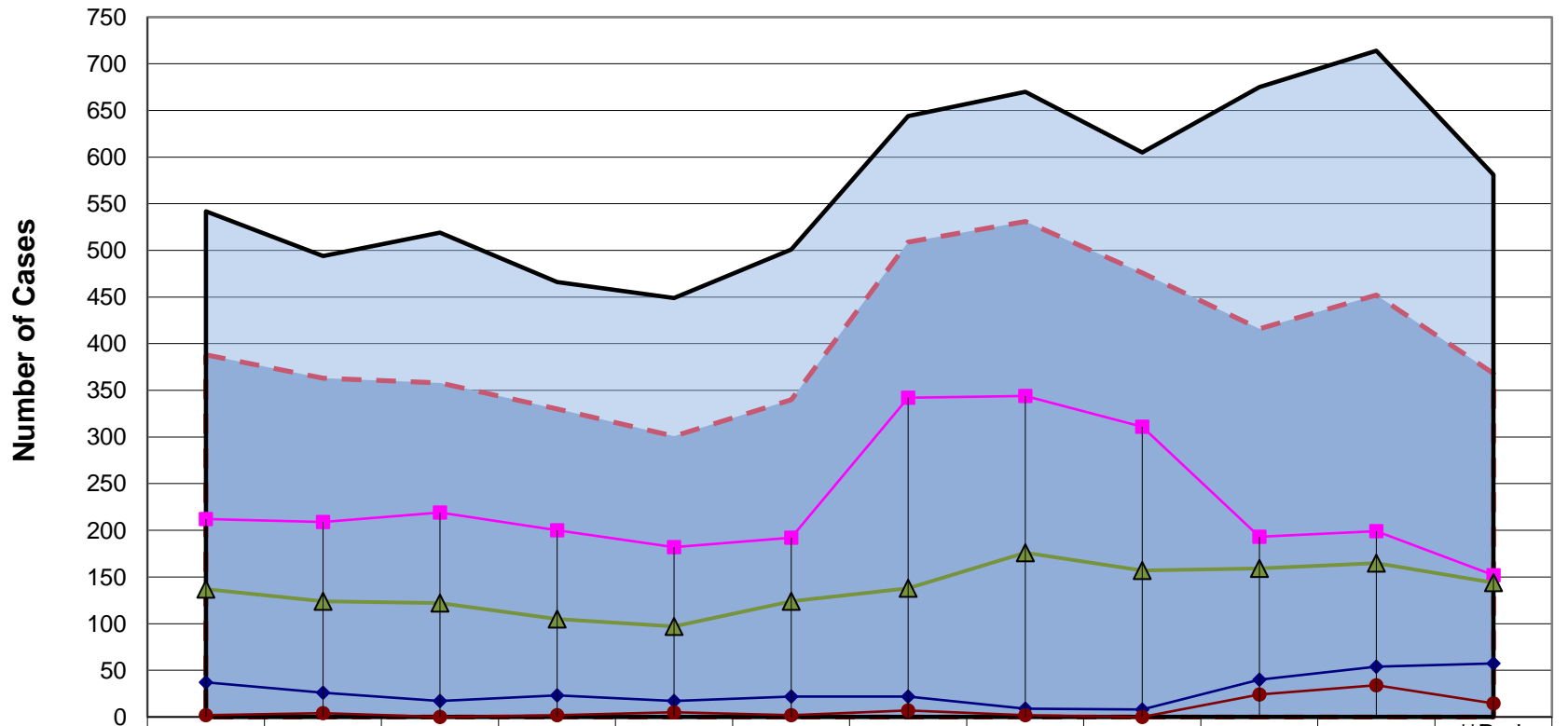
*Includes Mediated to Partial Agreement

**Projection Calculated Using First Through Third Quarter Reporting Data

Date Prepared: 10/26/2022

Otsego Trend Report

Annual Comparison of Disposed Cases



	2011	2012	2013	2014	2015	2016	2017	2018	2019	2020	2021	**Proj. 2022
Total Core	388	363	358	330	301	340	509	531	476	416	452	368
Total Disposed	542	494	519	466	449	501	644	670	605	675	714	581
Conciliated	37	26	17	23	17	22	22	9	8	40	54	57
Mediated to Agreement	212	209	219	200	182	192	342	344	311	193	199	152
*Mediated w/o Agreement	137	124	122	105	97	124	138	176	157	159	165	144
Facilitated/Arbitrated	2	4	0	2	5	2	7	2	0	24	34	15

- - - Total Core
 Total Disposed
 ◆ Conciliated
 ■ Mediated to Agreement
 ▲ *Mediated w/o Agreement
 ● Facilitated/Arbitrated

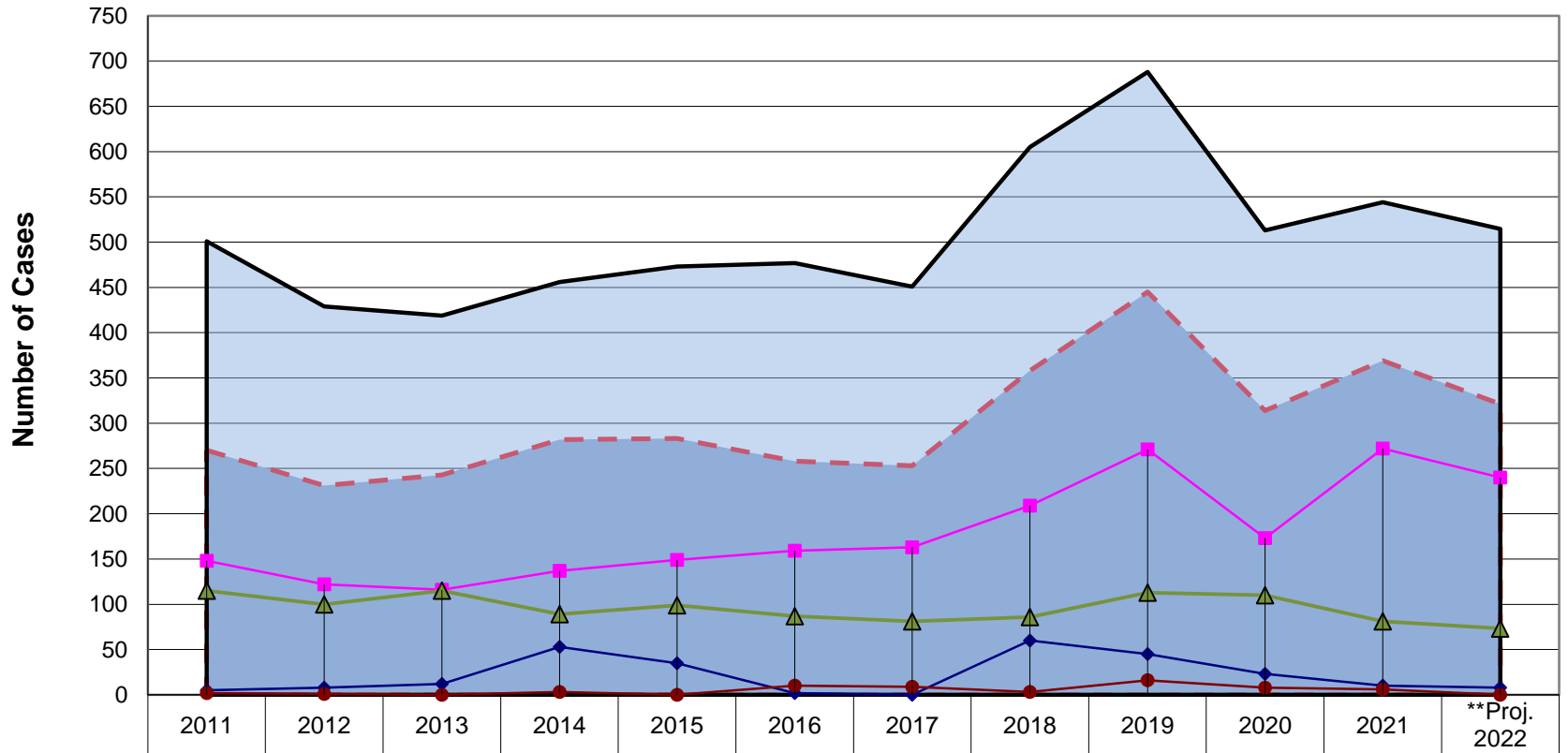
*Includes Mediated to Partial Agreement

**Projection Calculated Using First Through Third Quarter Reporting Data

Date Prepared: 10/26/2022

Ottawa Trend Report

Annual Comparison of Disposed Cases



	2011	2012	2013	2014	2015	2016	2017	2018	2019	2020	2021	**Proj. 2022
Total Core	270	231	243	282	283	258	253	358	445	314	369	321
Total Disposed	501	429	419	456	473	477	451	605	688	513	544	515
Conciliated	5	8	12	53	35	2	0	60	45	23	10	8
Mediated to Agreement	148	122	116	137	149	159	163	209	271	173	272	240
*Mediated w/o Agreement	115	100	115	89	99	87	81	86	113	110	81	73
Facilitated/Arbitrated	2	1	0	3	0	10	9	3	16	8	6	0

▬ Total Core
 Total Disposed
 ◆ Conciliated
 ■ Mediated to Agreement
 ▲ *Mediated w/o Agreement
 ● Facilitated/Arbitrated

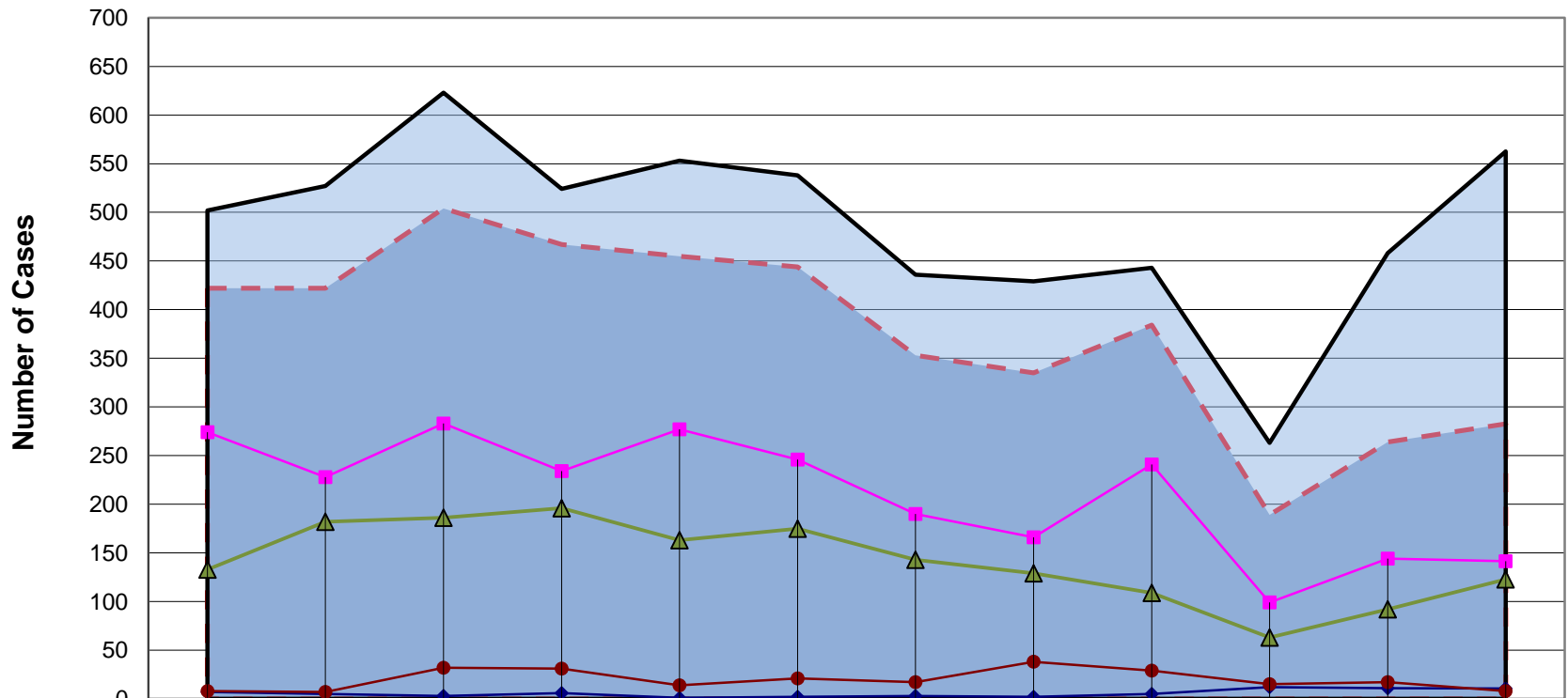
*Includes Mediated to Partial Agreement

**Projection Calculated Using First Through Third Quarter Reporting Data

Date Prepared: 10/26/2022

Washtenaw Trend Report

Annual Comparison of Disposed Cases



	2011	2012	2013	2014	2015	2016	2017	2018	2019	2020	2021	**Proj. 2022
Total Core	422	422	504	467	455	444	353	335	384	189	264	283
Total Disposed	502	527	623	524	553	538	436	429	443	263	458	563
Conciliated	7	5	3	6	1	2	3	2	5	12	11	11
Mediated to Agreement	274	228	283	234	277	246	190	166	241	99	144	141
*Mediated w/o Agreement	133	182	186	196	163	175	143	129	109	63	92	123
Facilitated/Arbitrated	8	7	32	31	14	21	17	38	29	15	17	8

- - - Total Core
 Total Disposed
 ◆ Conciliated
 ■ Mediated to Agreement
 ▲ *Mediated w/o Agreement
 ● Facilitated/Arbitrated

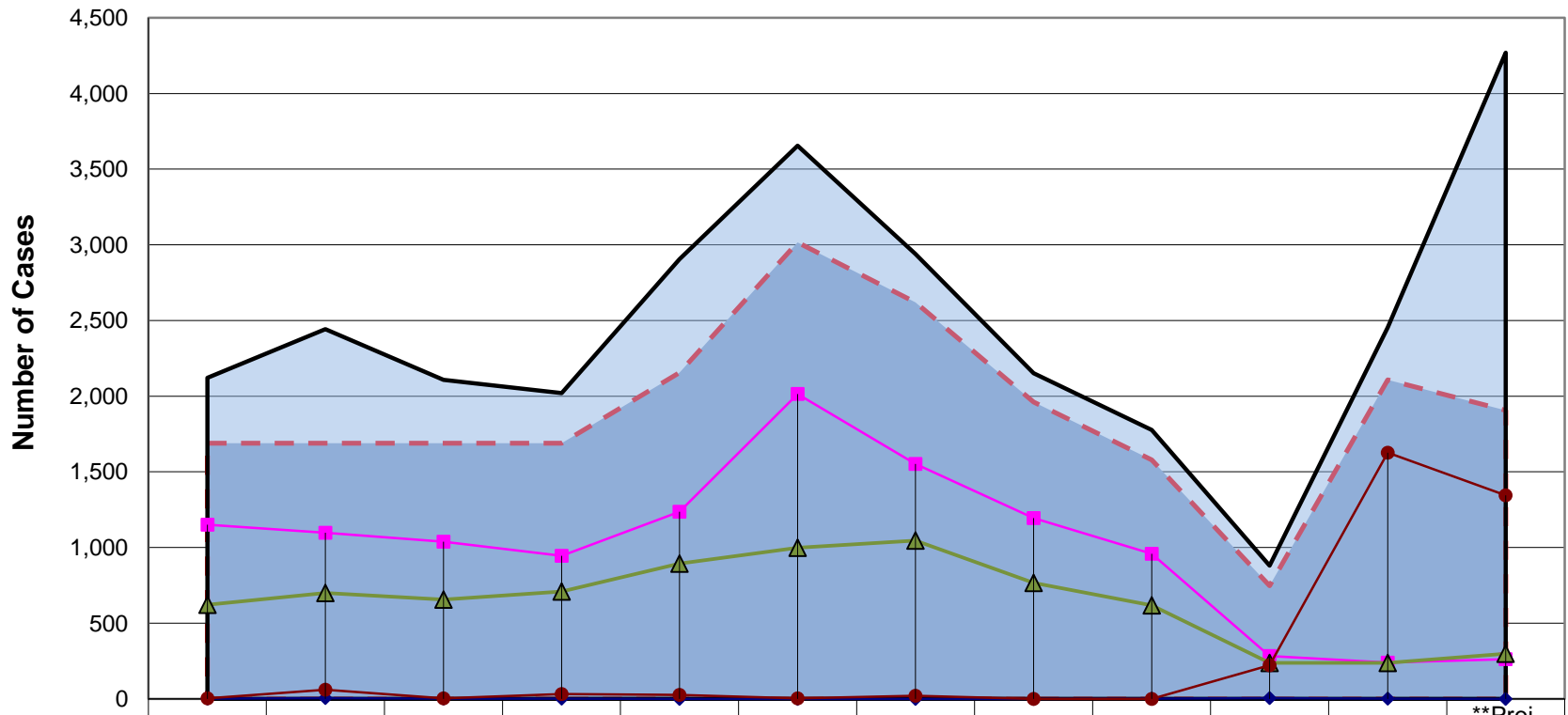
*Includes Mediated to Partial Agreement

**Projection Calculated Using First Through Third Quarter Reporting Data

Date Prepared: 10/26/2022

Wayne Trend Report

Annual Comparison of Disposed Cases



	2011	2012	2013	2014	2015	2016	2017	2018	2019	2020	2021	**Proj. 2022
Total Core	1,689	1,689	1,689	1,689	2,156	3,016	2,619	1,961	1,579	748	2,107	1,905
Total Disposed	2,122	2,443	2,107	2,020	2,906	3,654	2,939	2,151	1,777	881	2,454	4,269
Conciliated	1	5	1	1	0	0	0	0	1	5	2	0
Mediated to Agreement	1,150	1,098	1,039	945	1,236	2,014	1,552	1,195	959	283	240	263
*Mediated w/o Agreement	622	699	656	710	894	998	1,046	766	619	238	238	299
Facilitated/Arbitrated	3	61	4	33	26	4	21	0	0	222	1,627	1,344

▬ Total Core
 Total Disposed
 ◆ Conciliated
 ■ Mediated to Agreement
 ▲ *Mediated w/o Agreement
 ● Facilitated/Arbitrated

*Includes Mediated to Partial Agreement

**Projection Calculated Using First Through Third Quarter Reporting Data

Date Prepared: 10/26/2022